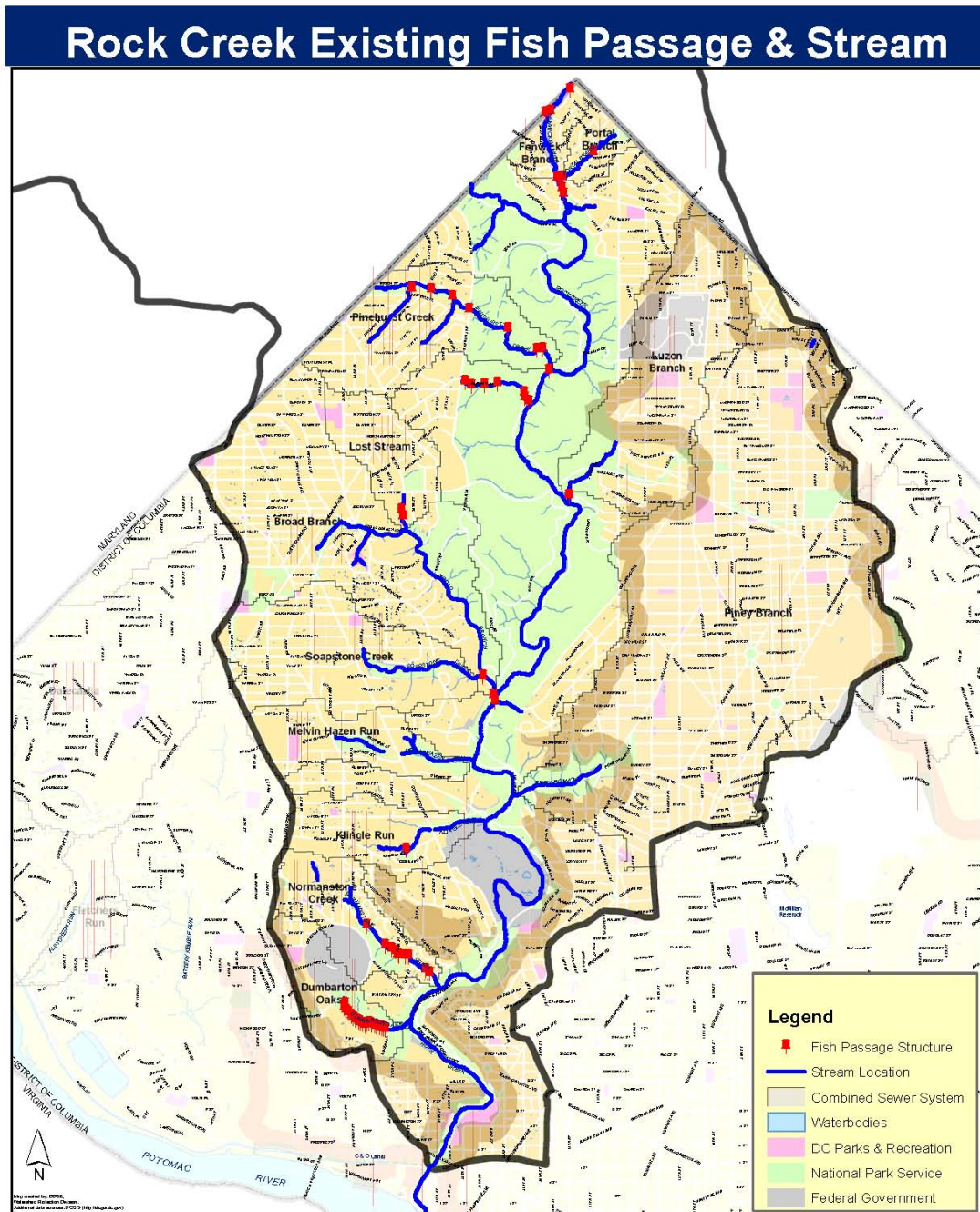


Appendix E: Fish Passage Restoration Sites



PROJECT_NUMBER RC_FP_01
SITE_LOCATION Portal Branch - East Beach Drive NW and North Portal NW

ADC_MAP_LOCATION 5408_D2
X 396311.86786653
Y 146671.04282154
OWNERSHIP Public
APPROXIMATE_UPSTREAM_LENGTH 2300
DESCRIPTION_OF_EXISTING_CONDTIONS Culvert under Bridge - blocks fish passage to Portal Branch

PROJECT_DESCRIPTION Install fish passage under culvert to give fish access to Portal Branch.

ESTIMATED_COST \$50,000.00
PROJECT_RANKING_EDUCATION Low
PROJECT_RANKING_ENVIRONMENT High
PROJECT_RANKING_INSTALLATION High



PROJECT_NUMBER	RC_FP_02
SITE_LOCATION	Portal Branch - between North Portal Drive NW and South Portal Drive NW
ADC_MAP_LOCATION	5408_D2
X	396646.37001084
Y	146957.25002181
OWNERSHIP	Public
APPROXIMATE_UPSTREAM_LENGTH	1200
DESCRIPTION_OF_EXISTING_CONDITIONS	Sewer line crossing stream. Exposed line creates barrier to fish passage.
PROJECT_DESCRIPTION	Raise stream level to previous level to remove fish blockage.
ESTIMATED_COST	\$50,000.00
PROJECT_RANKING_EDUCATION	Low
PROJECT_RANKING_ENVIRONMENT	High
PROJECT_RANKING_INSTALLATION	High



PROJECT_NUMBER

RC_FP_03

SITE_LOCATION

Dumbarton Run - Whitehaven Street NW to Rock Creek mainstem

ADC_MAP_LOCATION

5527_K4&5528_A4

X

394516.13013

Y

138707.31502

OWNERSHIP

Public

APPROXIMATE_UPSTREAM_LENGTH

2000

DESCRIPTION_OF_EXISTING_CONDITIONS

Small first order stream with some incised banks at up stream end and greater erosion downstream of Lover's Lane NW. Twenty blockages to fish passage and hardened banks. Blockages likely considered historic.

PROJECT_DESCRIPTION

Remove twenty blockages to fish passage between mouth of Klinge Run and headwater outfall.

ESTIMATED_COST

\$500,000.00

PROJECT_RANKING_EDUCATION

High

PROJECT_RANKING_ENVIRONMENT

High

PROJECT_RANKING_INSTALLATION

Low



PROJECT_NUMBER
SITE_LOCATION

RC_FP_04
Tregaron Park - Klingle Road NW and Cortland Place NW

ADC_MAP_LOCATION

5528_A2

X

394708.53000904

Y

140264.4100156

OWNERSHIP

Private

APPROXIMATE_UPSTREAM_LENGTH

750

DESCRIPTION_OF_EXISTING_CONDITIONS

Wooded, manicured garden open to public with a small stream flowing through the park. Stream piped in some locations and bare soil exposed in areas. Stream flows under lily pond. Stream leaves park at Klingle Road where it is directed into a culvert.

PROJECT_DESCRIPTION

Remove culvert at Klingle Road. Daylight stream at this point and direct into mainstem of Klingle Road.

ESTIMATED_COST

\$80,000.00

PROJECT_RANKING_EDUCATION

High

PROJECT_RANKING_ENVIRONMENT

High

PROJECT_RANKING_INSTALLATION

Medium



PROJECT_NUMBER

RC_FP_05

SITE_LOCATION

Upper Normanstone - Normanstone Drive NW between Fulton Street NW and 30th Street NW

ADC_MAP_LOCATION

5527_K2&K3

X

394751.55064908

Y

139345.98092674

OWNERSHIP

Public

APPROXIMATE_UPSTREAM_LENGTH

2900

DESCRIPTION_OF_EXISTING_CONDITIONS

Three fish blockages at bridge culverts where Normanstone Drive crosses Upper Normanstone Run.

PROJECT_DESCRIPTION

Install fish passages under culverts to give fish access to Normanstone Run.

ESTIMATED_COST

\$200,000.00

PROJECT_RANKING_EDUCATION

Medium



PROJECT_NUMBER	RC_FP_06
SITE_LOCATION	Lower Normanstone Run - 30th Street NW and Normanstone Dr to Rock Creek
ADC_MAP_LOCATION	5528_A3
X	395090.3188094
Y	139093.05916651
OWNERSHIP	Public
APPROXIMATE_UPSTREAM_LENGTH	1700
DESCRIPTION_OF_EXISTING_CONDTIONS	Five fish blockages at bridge culverts where Normanstone Drive crosses Lower Normanstone Run. Sixth blockage at mouth of Normanstone Run caused by exposed sewer line. Blockage at Rock Creek Drive significant.
PROJECT_DESCRIPTION	Install fish passages under culverts to give fish access to Normanstone Run. Raise stream level to previous level to remove blockage by sewer line. Remove culvert and create bridge at Rock Creek Drive and Normanstone Drive.
ESTIMATED_COST	\$500,000.00
PROJECT_RANKING_EDUCATION	Medium
PROJECT_RANKING_ENVIRONMENT	High
PROJECT_RANKING_INSTALLATION	High



PROJECT_NUMBER	RC_FP_07
SITE_LOCATION	Tributary to Broad Branch - Military Road NW and 31st Street NW to Broad Branch Road NW
ADC_MAP_LOCATION	5408_A7
X	
Y	
OWNERSHIP	Public
APPROXIMATE_UPSTREAM_LENGTH	1000
DESCRIPTION_OF_EXISTING_CONDITIONS	Small first order stream with downcutting that has exposed sewer lines. Sewer lines create fish passage obstructions.
PROJECT_DESCRIPTION	Raise stream level to previous level to remove blockage by sewer lines.
ESTIMATED_COST	\$250,000.00
PROJECT_RANKING_EDUCATION	Low
PROJECT_RANKING_ENVIRONMENT	Medium
PROJECT_RANKING_INSTALLATION	Medium



PROJECT_NUMBER	RC_FP_08
SITE_LOCATION	Broad Branch - mouth of Broad Branch at Rock Creek - Beach Drive NW and Broad Branch Road NW
ADC_MAP_LOCATION	5408_B9
X	395692.69173796
Y	141814.34342503
OWNERSHIP	Public
APPROXIMATE_UPSTREAM_LENGTH	6400
DESCRIPTION_OF_EXISTING_CONDITIONS	Fish blockage at bridge culvert where Broad Branch Road crosses Broad Branch at the confluence of Rock Creek and Broad Branch.
PROJECT_DESCRIPTION	Install fish passage under bridge to give fish access to Broad Branch.
ESTIMATED_COST	\$150,000.00
PROJECT_RANKING_EDUCATION	High
PROJECT_RANKING_ENVIRONMENT	High
PROJECT_RANKING_INSTALLATION	High



PROJECT_NUMBER	RC_FP_09
SITE_LOCATION	Mouth of Soapstone Creek - Broad Branch Road NW near Ridge Road NW
ADC_MAP_LOCATION	5408_B9
X	395636.8368259
Y	141870.88838509
OWNERSHIP	Public
APPROXIMATE_UPSTREAM_LENGTH	4500
DESCRIPTION_OF_EXISTING_CONDITIONS	Fish blockage at bridge culvert where Broad Branch Road crosses Soapstone Creek at the confluence of Broad Branch and Soapstone Creek.
PROJECT_DESCRIPTION	Install fish passage under bridge to give fish access to Soapstone Creek.
ESTIMATED_COST	\$50,000.00
PROJECT_RANKING_EDUCATION	High
PROJECT_RANKING_ENVIRONMENT	High
PROJECT_RANKING_INSTALLATION	High



PROJECT_NUMBER	RC_FP_10
SITE_LOCATION	Bingham Run - Bingham Road NW from Oregon Avenue NW to Rock Creek
ADC_MAP_LOCATION	5408B5&C5
X	396002.61001024
Y	144572.65001959
OWNERSHIP	Public
APPROXIMATE_UPSTREAM_LENGTH	2500
DESCRIPTION_OF_EXISTING_CONDITIONS	Small tributary to Rock Creek adjacent to Bingham Road NW. Culverts at Beach Drive NW, a horse trail, and along Bingham Road create seven fish blockages.
PROJECT_DESCRIPTION	Install fish passages at roadway culverts to give fish access to Bingham Run.
ESTIMATED_COST	\$600,000.00
PROJECT_RANKING_EDUCATION	High
PROJECT_RANKING_ENVIRONMENT	High
PROJECT_RANKING_INSTALLATION	High



PROJECT_NUMBER

RC_FP_11

SITE_LOCATION

Upper Pinehurst Branch - Western Avenue NW and Beech Street NW to Oregon Avenue NW

ADC_MAP_LOCATION

5408A4&B4

X

394571.09000892

Y

145655.9400046

OWNERSHIP

Public

APPROXIMATE_UPSTREAM_LENGTH

3500

DESCRIPTION_OF_EXISTING_CONDITIONS

Deeply incised stream from outfall at Western Avenue NW where stream comes above ground to Oregon Avenue. Narrow stream valley with adjacent roadways limits restoration potential. Some exposed sewer infrastructure and blockages to fish passage.

PROJECT_DESCRIPTION

Install fish passage under Oregon Avenue bridge to give fish access to Upper Pinehurst Branch. Remove two abandoned sewer lines that cross stream and block passage. Change stream invert to cover two active sewer lines or reroute and remove them.

ESTIMATED_COST

\$200,000.00

PROJECT_RANKING_EDUCATION

Medium

PROJECT_RANKING_ENVIRONMENT

High

PROJECT_RANKING_INSTALLATION

High



PROJECT_NUMBER
SITE_LOCATION

RC_FP_12
Lower Pinehurst Branch - Oregon Avenue NW to Rock Creek

ADC_MAP_LOCATION
X
Y

5408B4&C5
395446.83999373
145464.52000442

OWNERSHIP

Public

APPROXIMATE_UPSTREAM_LENGTH

3800

DESCRIPTION_OF_EXISTING_CONDITIONS

Deeply incised stream from Oregon Avenue Bridge to Rock Creek. Undeveloped stream valley gives restoration potential however a lot of sewer infrastructure present. Some exposed sewer lines and blockages to fish passage.

PROJECT_DESCRIPTION

Install fish passage under Beach Drive bridge to give fish access to Lower Pinehurst Branch. Change stream invert to cover three active sewer lines or reroute and remove them. One of three is a large concrete sluiceway.

ESTIMATED_COST

\$300,000.00

PROJECT_RANKING_EDUCATION

High

PROJECT_RANKING_ENVIRONMENT

High

PROJECT_RANKING_INSTALLATION

High



PROJECT_NUMBER

RC_FP_13

SITE_LOCATION

Luzon Branch - Beach Drive NW and Old Military Road NW

ADC_MAP_LOCATION

5408_D7

X

396376.11999459

Y

143640.22000273

OWNERSHIP

Public

APPROXIMATE_UPSTREAM_LENGTH

2600

DESCRIPTION_OF_EXISTING_CONDITIONS

Fish blockage at bridge where Beach Drive crosses Luzon Branch at the confluence of Luzon Branch and Rock Creek.

PROJECT_DESCRIPTION

Install fish passage under Beach Drive bridge to give fish access to Luzon Branch.

ESTIMATED_COST

\$100,000.00

PROJECT_RANKING_EDUCATION

High

PROJECT_RANKING_ENVIRONMENT

High

PROJECT_RANKING_INSTALLATION

High



PROJECT_NUMBER

RC_FP_14

SITE_LOCATION

Upper Fenwick Branch - MD border at East-West Hwy to Portal Branch

ADC_MAP_LOCATION

5408_D1&C2

X

396214.91999444

Y

147215.36000605

OWNERSHIP

Public

APPROXIMATE_UPSTREAM_LENGTH

3800

DESCRIPTION_OF_EXISTING_CONDITIONS

Deeply incised stream from outfall at East-West Hwy where stream comes above ground to Portal Branch. Moderate protected stream valley but large amounts of stormwater from MD limit restoration. Exposed sewer infrastructure and blockages to fish passage.

PROJECT_DESCRIPTION

Change stream invert to cover four active sewer lines or reroute and remove them.

ESTIMATED_COST

\$300,000.00

PROJECT_RANKING_EDUCATION

Medium

PROJECT_RANKING_ENVIRONMENT

High



PROJECT_NUMBER RC_FP_15
SITE_LOCATION Lower Fenwick Branch - Portal Branch to Rock Creek mainstem

ADC_MAP_LOCATION 5408_D3
X 396303.91999452
Y 146486.88000537
OWNERSHIP Public
APPROXIMATE_UPSTREAM_LENGTH 500
DESCRIPTION_OF_EXISTING_CONDITIONS Fish passage blockage at Kalmia Street Bridge.

PROJECT_DESCRIPTION Install fish passage under Kalmia Street NW bridge to give fish access to Upper Fenwick Branch.

ESTIMATED_COST \$200,000.00
PROJECT_RANKING_EDUCATION Medium
PROJECT_RANKING_ENVIRONMENT High
PROJECT_RANKING_INSTALLATION High



PROJECT_NUMBER	RC_FP_16
SITE_LOCATION	Blagden Run - Blagden Avenue NW and Beach Drive NW
ADC_MAP_LOCATION	5408_C10
X	395702.54354597
Y	141720.37363295
OWNERSHIP	Public
APPROXIMATE_UPSTREAM_LENGTH	1000
DESCRIPTION_OF_EXISTING_CONDITIONS	Culvert under Beach Drive a barrier to fish passage for Blagden Run.
PROJECT_DESCRIPTION	Install fish passage under Beach Drive bridge to give fish access to Blagden Run.
ESTIMATED_COST	\$100,000.00
PROJECT_RANKING_EDUCATION	High
PROJECT_RANKING_ENVIRONMENT	Medium
PROJECT_RANKING_INSTALLATION	High

