



ROCK CREEK - LUZON BRANCH MANAGEMENT MAP



Legend

-  Stormwater LID Retrofit Sites
-  Wetland Restoration Sites
-  CSS Outfalls
-  Waterbodies
-  DC Parks & Recreation
-  National Park Service

0 0.05 0.1 Miles

Scale: 1:15,000

0 0.04 0.08 0.16 Miles

Source:
District Department of
the Environment

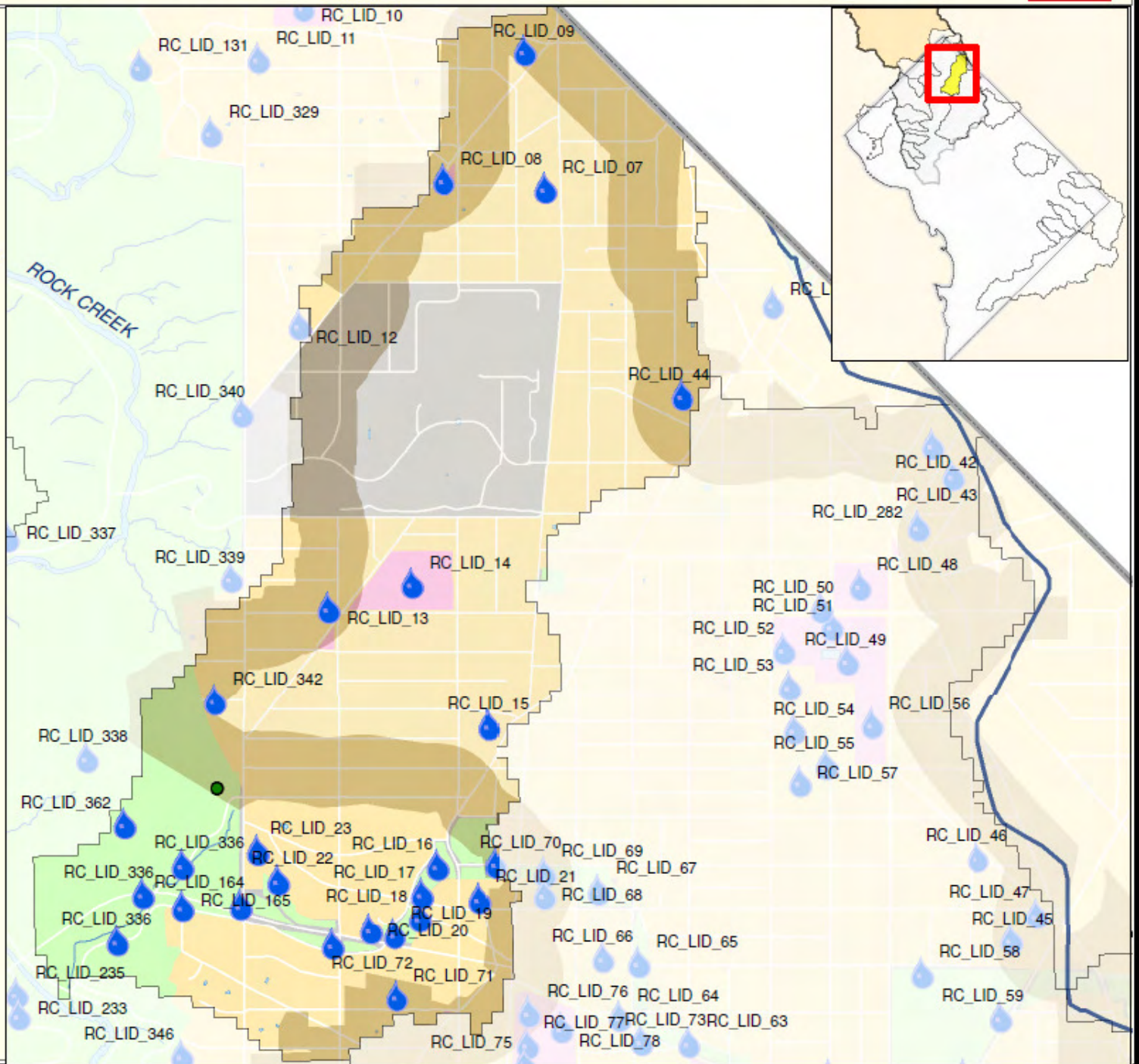
Prepared by: DDOE WPD

Date: July 31, 2010

Coordinate System:
NAD 1983 StatePlane Maryland FIPS 1900



Information on this map is for illustration only. The user acknowledges and agrees that the use of this information is at the sole risk of the user. No endorsement, liability, or responsibility for information or opinions expressed are assumed or accepted by any agency of the DC Government.



SITE_LOCATION PROJECT_NUMBER RC_LID_007
Shepherd Park Library -7418 Georgia Avenue NW

ADC_MAP_LOCATION 5408_F4
DRAINAGE_AREA_SIZE_(ACRES) 0.4282458
OWNERSHIP District
APPROXIMATE_IMPERVIOUSNESS 0.00%
DESCRIPTION_OF_EXISTING_CONDCTIONS Small open space with 8 parking spots and small outdoor courtyard.

PROJECT_DESCRIPTION Flat roof for green roof, permeable pavement for parking lot & sidewalks, and raised infiltration planters to take roof runoff.

ESTIMATED_COST \$36,401.00
PROJECT_RANKING_EDUCATION high
PROJECT_RANKING_ENVIRONMENT low
PROJECT_RANKING_INSTALLATION high

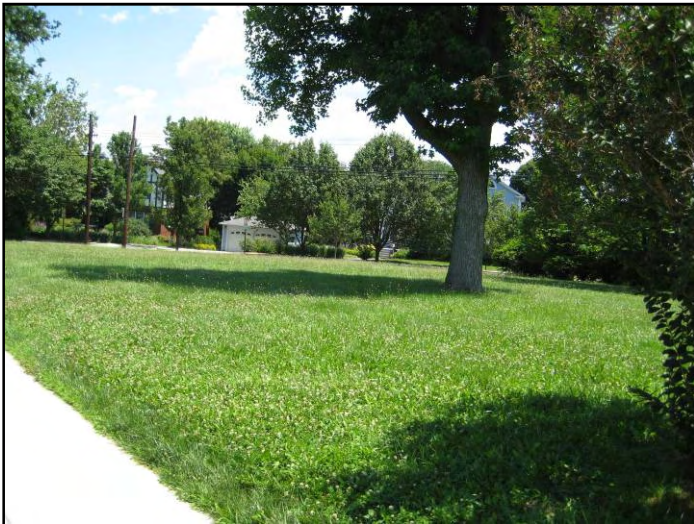


PROJECT_NUMBER RC_LID_008
SITE_LOCATION Marvin Caplan Memorial Park - 7400 block of Alaska Avenue NW

ADC_MAP_LOCATION 5408_F4
DRAINAGE_AREA_SIZE_(ACRES) 0.636928
APPROXIMATE_IMPERVIOUSNESS 0.00%
OWNERSHIP District
DESCRIPTION_OF_EXISTING_CONDTIONS Triangle park that is currently maintained as grass and trees.

PROJECT_DESCRIPTION Bioretention installation in park taking stormwater from Alaska Avenue. Site could have additional tree planting as well.

ESTIMATED_COST \$22,292.00
PROJECT_RANKING_EDUCATION high
PROJECT_RANKING_ENVIRONMENT high
PROJECT_RANKING_INSTALLATION high

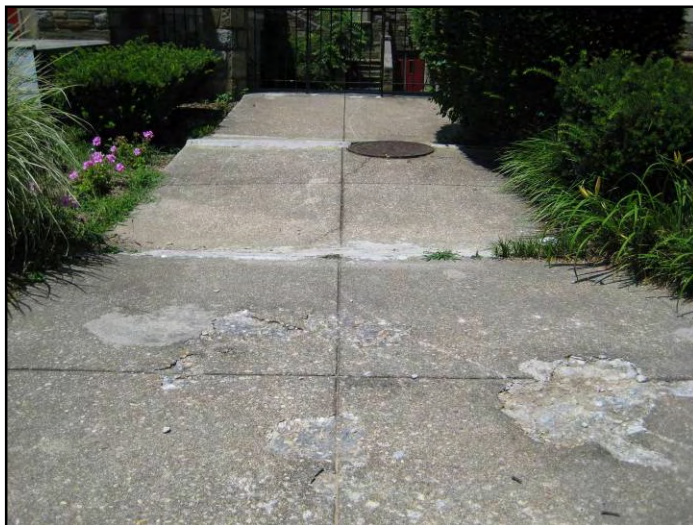
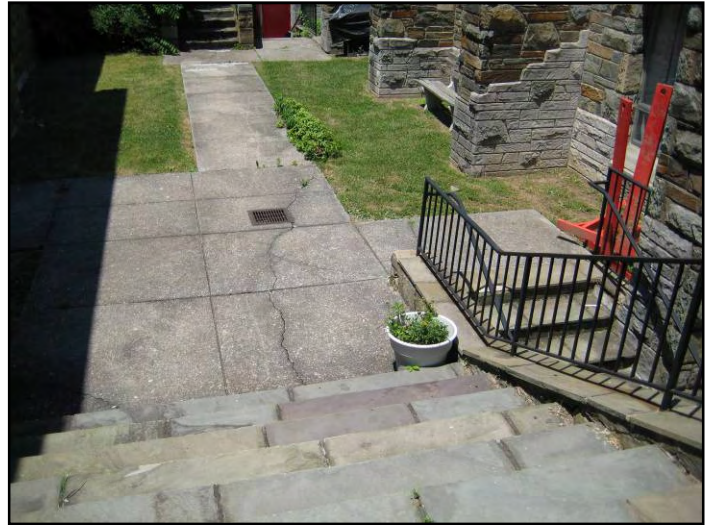


PROJECT_NUMBER RC_LID_009
SITE_LOCATION Northminster Presbyterian Church - 7720 Alaska Avenue NW

ADC_MAP_LOCATION 5408_F3
DRAINAGE_AREA_SIZE_(ACRES) 0.9744219
APPROXIMATE_IMPERVIOUSNESS 0.00%
OWNERSHIP Church
DESCRIPTION_OF_EXISTING_CONDITIONS Church property currently maintained as grass with some trees and vegetable garden.

PROJECT_DESCRIPTION Additional trees, bio-retention can be installed to take runoff from Kalmia Road NW.

ESTIMATED_COST \$34,105.00
PROJECT_RANKING_EDUCATION high
PROJECT_RANKING_ENVIRONMENT medium
PROJECT_RANKING_INSTALLATION medium

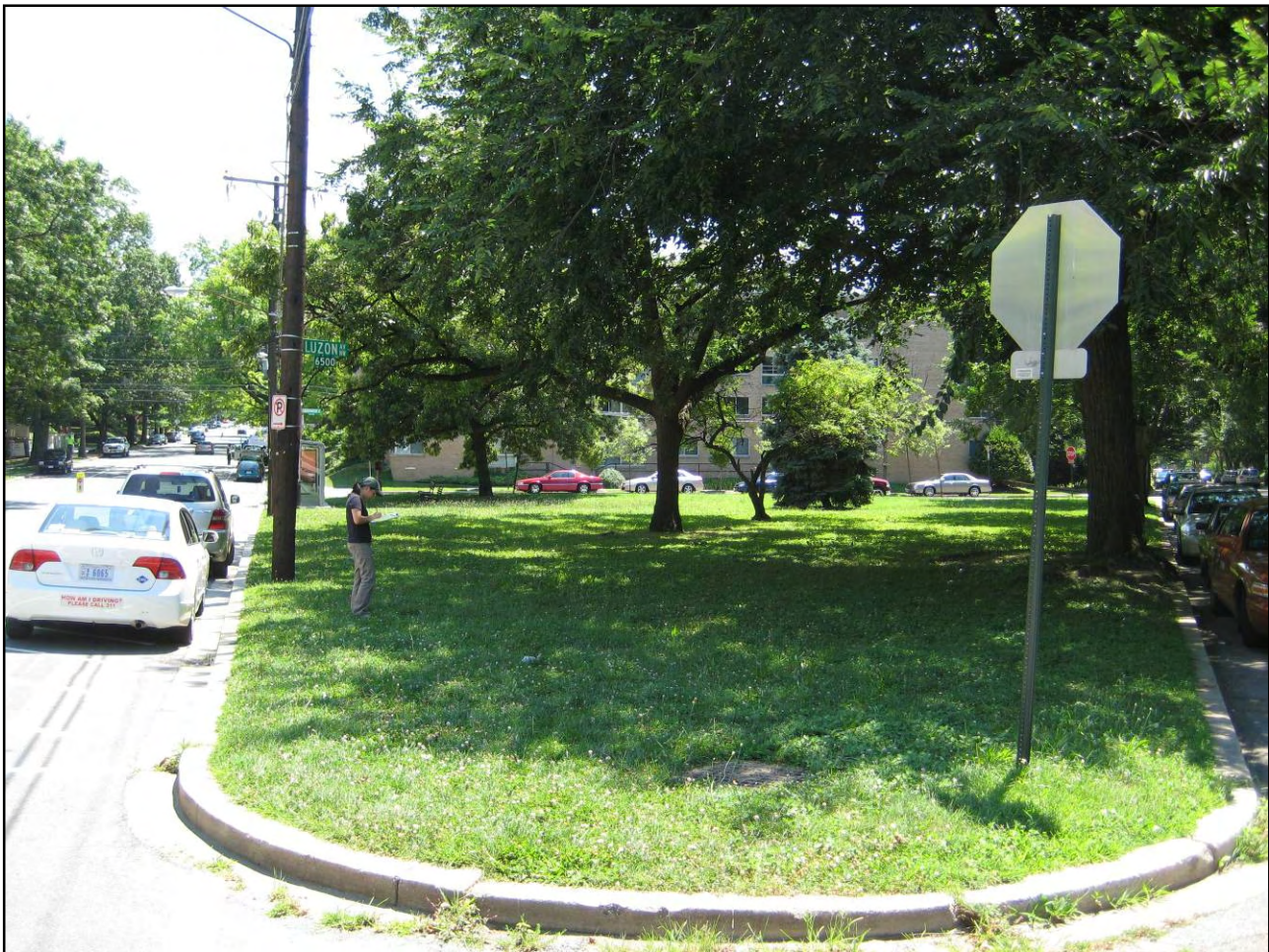


PROJECT_NUMBER RC_LID_013
SITE_LOCATION Triangle Park - Luzon Street NW and 14th Street NW

ADC_MAP_LOCATION 5408_E5
DRAINAGE_AREA_SIZE_(ACRES) 1.643187
APPROXIMATE_IMPERVIOUSNESS 0.00%
OWNERSHIP District/NPS
DESCRIPTION_OF_EXISTING_CONDTIONS Triangle Park - currently grass and trees.

PROJECT_DESCRIPTION Install bioretention to take water from 14th Street. Install bump out on Underwood Street NW to take stormwater from Underwood.

ESTIMATED_COST \$139,671.00
PROJECT_RANKING_EDUCATION medium
PROJECT_RANKING_ENVIRONMENT high
PROJECT_RANKING_INSTALLATION high



PROJECT_NUMBER

RC_LID_014

SITE_LOCATION

Ft. Stevens Recreation Center - 1327 Whittier Street NW

ADC_MAP_LOCATION

5408_E5

DRAINAGE_AREA_SIZE_(ACRES)

10.76678

APPROXIMATE_IMPERVIOUSNESS

0.00%

OWNERSHIP

District

DESCRIPTION_OF_EXISTING_CONDITIONS

Open fields for soccer on lowest ground. Impervious recreation building, tennis courts, basketball courts, and play area on higher ground.

PROJECT_DESCRIPTION

A large underground cistern to accept stormwater from impervious areas and use to water ball field area. Lots of space for reforestation. Bioretention & impervious surface removal. Treat stormwater from 13th Street and parts of Whittier Street in park.

ESTIMATED_COST

\$376,837.00

PROJECT_RANKING_EDUCATION

high

PROJECT_RANKING_ENVIRONMENT

high

PROJECT_RANKING_INSTALLATION

high



PROJECT_NUMBER RC_LID_015
SITE_LOCATION St. John's Church - 6343 13th Street NW

ADC_MAP_LOCATION 5408_F6
DRAINAGE_AREA_SIZE_(ACRES) 2.386568
APPROXIMATE_IMPERVIOUSNESS 0.00%
OWNERSHIP Church
DESCRIPTION_OF_EXISTING_CONDITIONS Grass and shrubs - no photo

PROJECT_DESCRIPTION Reforestation of open space. Bioretention to treat stormwater from Piney Branch and church.

ESTIMATED_COST \$83,530.00
PROJECT_RANKING_EDUCATION low
PROJECT_RANKING_ENVIRONMENT low
PROJECT_RANKING_INSTALLATION low

PROJECT_NUMBER RC_LID_016
SITE_LOCATION Ft. Circle Park - 13th Place NW and Peabody Street NW

ADC_MAP_LOCATION 5408_F6
DRAINAGE_AREA_SIZE_(ACRES) 1.862893
APPROXIMATE_IMPERVIOUSNESS 0.00%
OWNERSHIP District/NPS
DESCRIPTION_OF_EXISTING_CONDTIONS Grass, dying trees, maintained community garden.

PROJECT_DESCRIPTION Reforestation and invasive removal. Bioretention to take water from 13th Street NW.

ESTIMATED_COST \$65,201.00
PROJECT_RANKING_EDUCATION high
PROJECT_RANKING_ENVIRONMENT medium
PROJECT_RANKING_INSTALLATION medium



PROJECT_NUMBER RC_LID_017
SITE_LOCATION Ft. Circle Park - North of Peabody Street NW along 13th Place NW

ADC_MAP_LOCATION 5408_F6
DRAINAGE_AREA_SIZE_(ACRES) 0.7571136
APPROXIMATE_IMPERVIOUSNESS 0.00%
OWNERSHIP District/NPS
DESCRIPTION_OF_EXISTING_CONDTIONS Grass and trees adjacent to impervious roadway.

PROJECT_DESCRIPTION Reforestation; install bioretention to capture runoff from 13th Place, NW.

ESTIMATED_COST \$26,499.00
PROJECT_RANKING_EDUCATION medium
PROJECT_RANKING_ENVIRONMENT medium
PROJECT_RANKING_INSTALLATION medium



| | |
|------------------------------------|---|
| PROJECT_NUMBER | RC_LID_018 |
| SITE_LOCATION | Ft. Circle Park: South of Peabody Street NW along 13th Place NW |
| ADC_MAP_LOCATION | 5408_F6 |
| DRAINAGE_AREA_SIZE_(ACRES) | 2.027432 |
| APPROXIMATE_IMPERVIOUSNESS | 0.00% |
| OWNERSHIP | District/NPS |
| DESCRIPTION_OF_EXISTING_CONDITIONS | Grass adjacent to impervious roadway. |

| | |
|---------------------|---|
| PROJECT_DESCRIPTION | install bioretention to treat stormwater coming from Peabody St. NW |
|---------------------|---|

| | |
|------------------------------|--------------|
| ESTIMATED_COST | \$101,372.00 |
| PROJECT_RANKING_EDUCATION | medium |
| PROJECT_RANKING_ENVIRONMENT | medium |
| PROJECT_RANKING_INSTALLATION | low |



PROJECT_NUMBER RC_LID_019
SITE_LOCATION Ft. Circle Park: North of Military Rd, NW

ADC_MAP_LOCATION 5408_E7
DRAINAGE_AREA_SIZE_(ACRES) 1.300231
APPROXIMATE_IMPERVIOUSNESS 0.00%
OWNERSHIP District/NPS
DESCRIPTION_OF_EXISTING_CONDITIONS Stormwater from road and park drains into spill way.

PROJECT_DESCRIPTION Reforestation; install bioretention at the side of alley; another bioretention to treat stormwater coming from 13th Place, NW

ESTIMATED_COST \$45,508.00
PROJECT_RANKING_EDUCATION medium
PROJECT_RANKING_ENVIRONMENT low
PROJECT_RANKING_INSTALLATION medium



PROJECT_NUMBER RC_LID_020
SITE_LOCATION L.A.M.B school - 1375 Missouri Ave, N.W

ADC_MAP_LOCATION 5408_E7
DRAINAGE_AREA_SIZE_(ACRES) 0.7563102
APPROXIMATE_IMPERVIOUSNESS 0.00%
OWNERSHIP District
DESCRIPTION_OF_EXISTING_CONDTIONS Grass, trees, and shrubs

PROJECT_DESCRIPTION Install bioretention at the picnic area to capture water from the neighboring slopes; install bioretention in wet area of Military Rd, NW side

ESTIMATED_COST \$64,286.00
PROJECT_RANKING_EDUCATION high
PROJECT_RANKING_ENVIRONMENT medium
PROJECT_RANKING_INSTALLATION high



PROJECT_NUMBER RC_LID_021
SITE_LOCATION Church of the Nativity - 6000 Georgia Avenue NW

ADC_MAP_LOCATION 5408_F6
DRAINAGE_AREA_SIZE_(ACRES) 1.255102
APPROXIMATE_IMPERVIOUSNESS 0.00%
OWNERSHIP Church
DESCRIPTION_OF_EXISTING_CONDTIONS Large paved parking lot and grass area

PROJECT_DESCRIPTION Install swale along hill side that will capture water from parking lot.

ESTIMATED_COST \$43,929.00
PROJECT_RANKING_EDUCATION medium
PROJECT_RANKING_ENVIRONMENT medium
PROJECT_RANKING_INSTALLATION medium



PROJECT_NUMBER RC_LID_022
SITE_LOCATION Behind 1444 Rock Creek Ford Road

ADC_MAP_LOCATION 5408_E6
DRAINAGE_AREA_SIZE_(ACRES) 0.5953184
APPROXIMATE_IMPERVIOUSNESS 0.00%
OWNERSHIP NPS
DESCRIPTION_OF_EXISTING_CONDTIONS National Park land fenced and maintained as grass behind 1444 Rock Creek Ford Road

PROJECT_DESCRIPTION Install bioretention cell to capture water coming from the wall and steep hill sides

ESTIMATED_COST \$50,602.00
PROJECT_RANKING_EDUCATION low
PROJECT_RANKING_ENVIRONMENT medium
PROJECT_RANKING_INSTALLATION medium



| | |
|------------------------------------|--|
| PROJECT_NUMBER | RC_LID_023 |
| SITE_LOCATION | Jewish Public Day School - 6101 16th St NW |
| ADC_MAP_LOCATION | 5408_E6 |
| DRAINAGE_AREA_SIZE_(ACRES) | 1.218578 |
| APPROXIMATE_IMPERVIOUSNESS | 0.00% |
| OWNERSHIP | Church |
| DESCRIPTION_OF_EXISTING_CONDITIONS | Largely paved area on higher elevations - school & parking lots. Steep slopes with trees, shrubs, grass around building. Building has flat roof. |
| PROJECT_DESCRIPTION | Reforestation of slopes. Perhaps some room for bioretention. Make pavement pervious to accept stormwater. Green roof. Note - no photo. |
| ESTIMATED_COST | \$60,929.00 |
| PROJECT_RANKING_EDUCATION | High |
| PROJECT_RANKING_ENVIRONMENT | Low |
| PROJECT_RANKING_INSTALLATION | Medium |

PROJECT_NUMBER RC_LID_044
SITE_LOCATION Takoma Educational Center School - 7010 Piney Branch Rd NW

ADC_MAP_LOCATION 5408_G4
DRAINAGE_AREA_SIZE_(ACRES) 6.688819
APPROXIMATE_IMPERVIOUSNESS 0.00%
OWNERSHIP District
DESCRIPTION_OF_EXISTING_CONDTIONS Large flat roofed building with internal downspouts, mix of paved and grassy areas surrounding the building including large playing field, courtyard, and basketball court. Surfaces in need of repair.

PROJECT_DESCRIPTION Reduction in impervious surfaces, impervious to pervious surfaces, bioretention to drain courtyard areas, existing drains can be retrofitted with bioretention to treat playgrounds, parking, reforestation, etc. Green roof.

ESTIMATED_COST \$334,441.00
PROJECT_RANKING_EDUCATION High
PROJECT_RANKING_ENVIRONMENT High
PROJECT_RANKING_INSTALLATION High



PROJECT_NUMBER RC_LID_071
SITE_LOCATION Community Academy PCS - 1351 Nicholson Road NW

ADC_MAP_LOCATION 5408_E7
DRAINAGE_AREA_SIZE_(ACRES) 0.8443835
APPROXIMATE_IMPERVIOUSNESS 0.00%
OWNERSHIP District
DESCRIPTION_OF_EXISTING_CONDITIONS Large mostly flat roofed building with external downspouts, property completely paved. Building has no on site stormwater control. Stormwater leaves property and flows to neighboring property.

PROJECT_DESCRIPTION Impervious surface removal. Change impervious surfaces to pervious ones. LID installation to treat remaining impervious surfaces. Green roof. Cisterns or bioretention boxes.

ESTIMATED_COST \$71,773.00
PROJECT_RANKING_EDUCATION High
PROJECT_RANKING_ENVIRONMENT High
PROJECT_RANKING_INSTALLATION High

PROJECT_NUMBER RC_LID_072
SITE_LOCATION Fort Circle Park - Military Road NW between Georgia Avenue NW and 16th Street NW

ADC_MAP_LOCATION 5408_E7
DRAINAGE_AREA_SIZE_(ACRES) 3.540358
APPROXIMATE_IMPERVIOUSNESS 0.00%
OWNERSHIP District/NPS
DESCRIPTION_OF_EXISTING_CONDTIONS Roadway drains to storm drains. Parkland primarily grass and trees.

PROJECT_DESCRIPTION Bioretention in parkland areas to treat stormwater from Military Road NW. Reforestation.

ESTIMATED_COST \$123,913.00
PROJECT_RANKING_EDUCATION High
PROJECT_RANKING_ENVIRONMENT High
PROJECT_RANKING_INSTALLATION Low



PROJECT_NUMBER RC_LID_164
SITE_LOCATION Traffic triangle -16th Street NW and Military Road, NW

ADC_MAP_LOCATION 5408_E6
DRAINAGE_AREA_SIZE_(ACRES) 1.798
APPROXIMATE_IMPERVIOUSNESS 0.00%
OWNERSHIP District/NPS
DESCRIPTION_OF_EXISTING_CONDITIONS Traffic triangle maintained as grass with some trees.

PROJECT_DESCRIPTION Install curb cuts and bioretention to capture runoff from Military Rd, NW.

ESTIMATED_COST \$62,930.00
PROJECT_RANKING_EDUCATION Medium
PROJECT_RANKING_ENVIRONMENT High
PROJECT_RANKING_INSTALLATION Low

PROJECT_NUMBER RC_LID_165
SITE_LOCATION Traffic triangle - Military Road NW and Beach Drive NW

ADC_MAP_LOCATION 5408_D7
DRAINAGE_AREA_SIZE_(ACRES) 1.370852
APPROXIMATE_IMPERVIOUSNESS 0.00%
OWNERSHIP District/NPS
DESCRIPTION_OF_EXISTING_CONDTIONS Traffic triangle maintained as grass with some trees.

PROJECT_DESCRIPTION Install curb cuts and bioretention to capture runoff from Military Rd, NW. Reforestation.

ESTIMATED_COST \$47,980.00
PROJECT_RANKING_EDUCATION Medium
PROJECT_RANKING_ENVIRONMENT High
PROJECT_RANKING_INSTALLATION Low

| | |
|-----------------------------------|---|
| PROJECT_NUMBER | RC_LID_235 |
| SITE_LOCATION | Cloverleaf - South side of Military Road NW and Beach Drive NW |
| ADC_MAP_LOCATION | 5408_C7 |
| DRAINAGE_AREA_SIZE_(ACRES) | 2.219742 |
| APPROXIMATE_IMPERVIOUSNESS | 0.00% |
| OWNERSHIP | District/NPS |
| DESCRIPTION_OF_EXISTING_CONDTIONS | Cloverleaf maintained as grass area with curb and gutter road adjacent. |
| PROJECT_DESCRIPTION | Install bioretention to treat runoff from cloverleaf and Military Road NW. Reforestation. |
| ESTIMATED_COST | \$77,691.00 |
| PROJECT_RANKING_EDUCATION | low |
| PROJECT_RANKING_ENVIRONMENT | high |
| PROJECT_RANKING_INSTALLATION | high |



PROJECT_NUMBER RC_LID_336
SITE_LOCATION Luzon Branch - 16th Street NW and Joyce Road NW to Rock Creek

ADC_MAP_LOCATION 5408_D6&D7
DRAINAGE_AREA_SIZE_(ACRES) 2.82903
APPROXIMATE_IMPERVIOUSNESS 0.00%
DESCRIPTION_OF_EXISTING_CONDTIONS Stream at bedrock from where comes above ground at Joyce Road NW and 16th Street NW to mouth at Rock Creek. Mix of soft banks with erosion and hardened banks protecting roadway infrastructure. Need for buffer. Several outfalls into stream.

PROJECT_DESCRIPTION Bioretention & regenerative stormwater conveyances for outfalls from Military Road and Old Military Road. Plenty of space for treating stormwater from 4 outfalls.

ESTIMATED_COST \$99,016.00
PROJECT_RANKING_EDUCATION Medium
PROJECT_RANKING_ENVIRONMENT High
PROJECT_RANKING_INSTALLATION High



PROJECT_NUMBER RC_LID_342
SITE_LOCATION Green end - 16th Street NW and Tuckerman Street NW

ADC_MAP_LOCATION 5408_D6
DRAINAGE_AREA_SIZE_(ACRES) 0.7726584
APPROXIMATE_IMPERVIOUSNESS 0.00%
DESCRIPTION_OF_EXISTING_CONDTIONS Road cul-de-sac that drains to intermittent stream valley.

PROJECT_DESCRIPTION Green ends project. Install bioretention at end street.

ESTIMATED_COST \$27,043.00
PROJECT_RANKING_EDUCATION Low
PROJECT_RANKING_ENVIRONMENT High
PROJECT_RANKING_INSTALLATION High

