

PERVIOUS PAVERS & RE-VEGETATION

Pervious pavers are a self-draining system that allows rainwater to seep around and through the paved surface, soaking naturally into the ground underneath. Re-vegetation entails replacing impervious surfaces with vegetation. To be eligible, you must remove and replace an existing large patio, driveway or parking lot. Walkways are not eligible.

Pervious pavers are more expensive than conventional paving but have a longer life expectancy. The total installation cost would depend on site specifics and materials. Refer to the specifications below:

Pervious Pavers

- 100 square foot minimum area
- Costs \$25 per square foot on average
- No maximum square foot limit

Re-Vegetation

- 200 square foot minimum area
- Costs \$6-13 per square foot on average
- No maximum square foot limit



Replace impervious surfaces with pervious pavers and receive a rebate of \$10 per square foot, and/or remove impervious surfaces and replace with vegetation and receive a rebate of \$5 per square foot.

Maintaining Your Pavers

It's crucial that you sweep, vacuum, or power wash your pavers regularly to prevent dirt from accumulating between the gaps and clogging.

PERVIOUS PAVERS & RE-VEGETATION

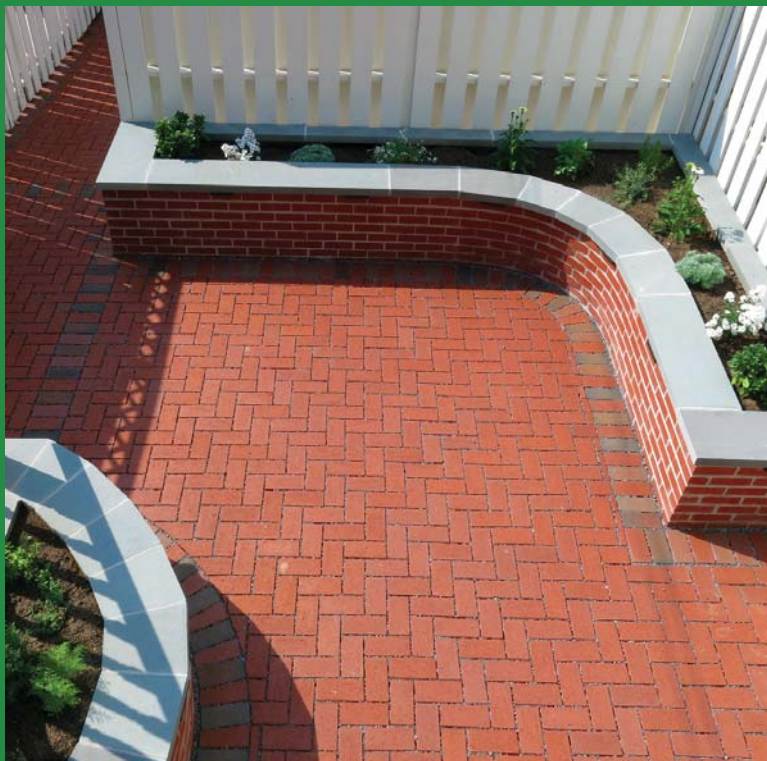
Next Steps

If you are interested in pervious pavers or vegetation, please do the following:



1. Review the 2016 Landscaping Rebate Program Homeowner Guide and Application Packet
2. Select a contractor or determine the equipment you will need if you will be performing the work yourself
3. Submit the Rebate Application Packet and schedule a pre-construction inspection
4. Notify us when the construction is complete and schedule a post-construction inspection
5. Receive a rebate check four to six weeks after post-construction approval

Visit doee.dc.gov/landscapingrebates to review the Homeowner Guide, Contractor List, and Rebate Application Packet.



Above photos are examples of pervious pavers. Pervious pavers come in a variety of styles to meet homeowner needs and preferences.