

clean water starts here



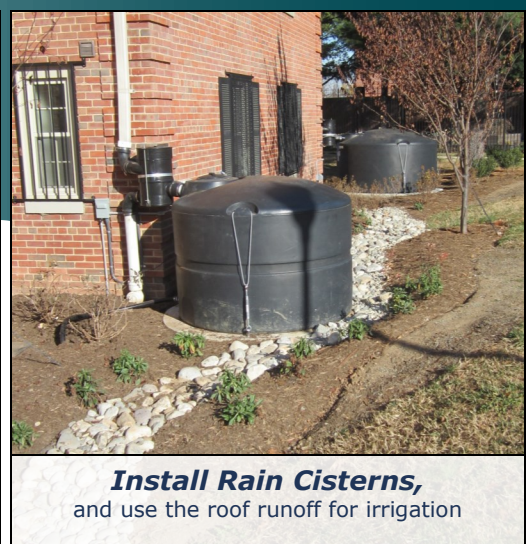
RiverSmart Communities



**Replace Impervious Surfaces
with Pervious Pavers**



Build Rain Gardens
to infiltrate and treat stormwater naturally.



Install Rain Cisterns,
and use the roof runoff for irrigation

RiverSmart Communities Defined

This District-wide program offers incentives to residents of multi-family properties, non-profit organizations, and houses of worship interested in reducing stormwater runoff from their properties. DOEE will enter into a cost share arrangement with the property to install one or more of the following stormwater Best Management Practices (BMPs): Cisterns, Rain Gardens, Permeable Pavement, and Conservation Landscaping. To participate:

- **Schedule the audit.** A DOEE staff person will schedule an appointment to conduct a stormwater audit on your site. The auditor will help your implementation team determine which stormwater retrofit projects are most feasible and cost-effective for the site and provide a written report.
- **Apply.** Call (202) 535-1735 or visit <http://doee.dc.gov/service/riversmart-communities> for a copy of the application. Property owners can apply for a rebate of up to 80% of the project cost for Low Impact Development practices. DOEE and the Anacostia Watershed Society reviews applications monthly.
- **Installation.** If approved for funding, property owners can proceed for installation and rebate is issued upon final inspection.



DEPARTMENT
OF **ENERGY &
ENVIRONMENT**

Stormwater Runoff and the District of Columbia

Stormwater runoff is rainwater that flows off impervious surfaces such as rooftops, driveways, roads, sidewalks and sometimes even lawns. Stormwater runoff travels from these surfaces to our streams, picking up pollutants such as oil and grease from our roadways and driveways as it goes. Nutrients from lawn fertilizers and bacteria from pet waste may also be picked up by

RiverSmart Communities BEFORE & AFTER



Benefits of RiverSmart Communities

To the Property Owner....

RiverSmart Communities landscaping enhancements can provide numerous benefits to property owners, such as:

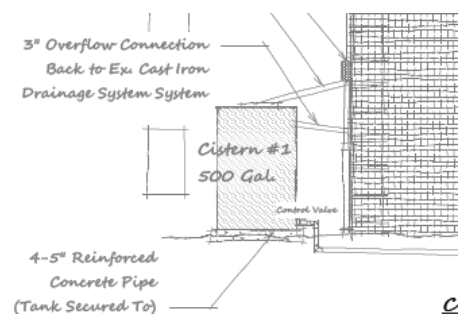
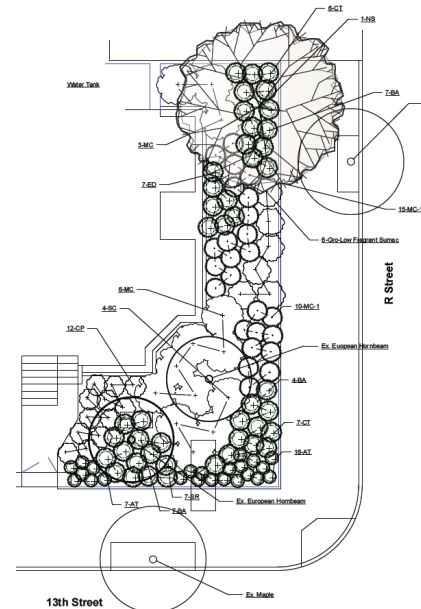
- Beautifully landscaped properties
- Cost savings on water, electricity and lawn-mower fuel and oil
- Reduced heating and cooling bills
- Reduced stress and better health
- Higher property values

To the District...

District properties are required to have items that reduce stormwater runoff. Unfortunately, most of the District was built before modern methods for controlling and treating stormwater were developed. Chances are you do not have any stormwater control measures on your property.

RiverSmart Communities benefit the District's environment by:

- Minimizing the use of herbicides, pesticides and fertilizers used in conventional landscaping
- Stabilizing soils, helping to prevent erosion
- Providing increased habitat for native wildlife
- Reducing air pollution and the *urban heat island effect*



Become a RiverSmart Community

Schedule the Department of Energy Environment (DOEE) to come out to your property to perform an analysis of what changes you can make to reduce stormwater runoff.

Call (202) 535-1735 or email RS.Communities@dc.gov to fill out the application and schedule a site audit.

Did you know?

Every year
in the District
25 billion gallons of
stormwater flows off
impervious surfaces and into
our local waterways.

**Do you live in a single-family home and want to
reduce stormwater runoff from your yard?
RiverSmart Homes Can Help.**

Find more information about RiverSmart Homes at:
doee.dc.gov/riversmart_homes or call 202-535-2240