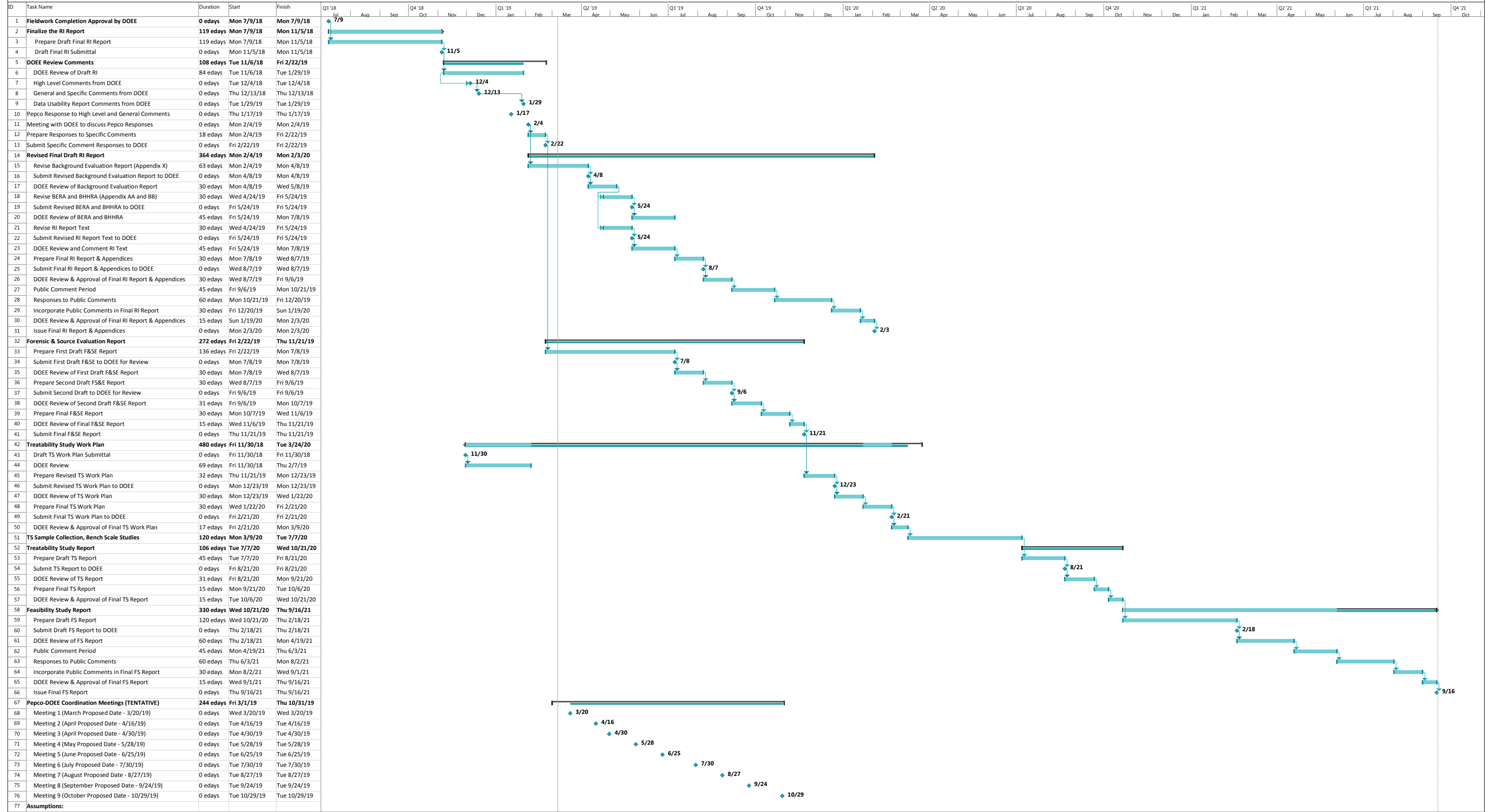


Benning Road RI/FS Project Schedule



Project: Benning Road RI/FS

Task	Milestone	Project Summary	Inactive Milestone	Manual Task	Manual Summary Rollup	Start-only	External Tasks	Deadline	Manual Progress
Split	Summary	Inactive Task	Inactive Summary	Duration-only	Manual Summary	Finish-only	External Milestone	Progress	

77 Assumptions:

The schedule is based on the following assumptions:

1. All task durations are in calendar days or elapsed days (edays).
2. The schedule shows assumed timeframes for DOEE's document reviews. If additional reviews or longer review times are needed, the schedule will need to be adjusted accordingly.
3. The RI finalization schedule is based on February 04, 2019 comment resolution meeting and the assumption that further scope changes will not be required as a result of future meetings.
4. It is assumed that no additional laboratory analysis will be required for the finalization of the RI Report.
5. A duration of 4 months is assumed to be sufficient for permitting, sample collection, and bench-scale studies.
6. Permits may be required from U.S. Army Corps of Engineers (USACE), the National Park Service (NPS) and DOEE for collecting TS samples. It is assumed that the existing permits can be modified prior to the commencement of Task 49. If permitting takes longer, the schedule will need further adjustment.
7. Durations for Public Comment Periods and Response to Public Comments are assumed based on the Draft RI Report public participation process. These durations are subject to change based on the extent of public comments received.