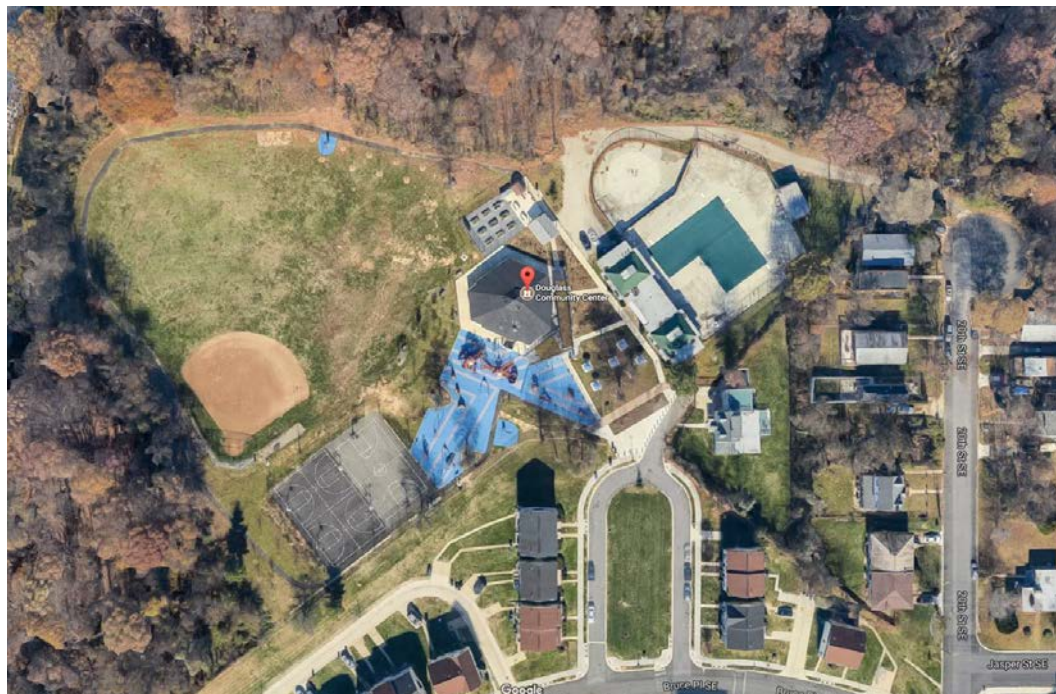
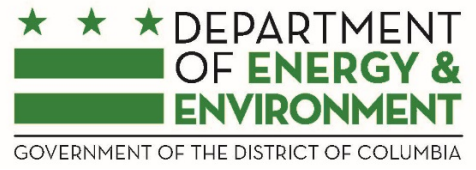


District of Columbia Clean Water Construction-State Revolving Fund (CWC-SRF) Site Summary

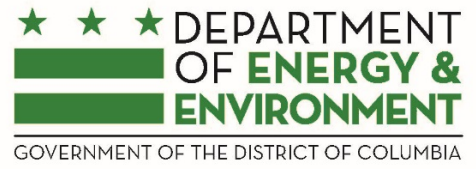
Schoolyard and Parkland Stormwater Retrofits			Grant Funding Year(s) FY2016	
Douglas Community Center			Lead Agency DOEE	
			Project Type Design/Construction	
Infrastructure Type Green	Project Category School/Recreational Facility Retrofit	Address 1922 Frederick Douglass Court SE		Status Planning
Design Start/End n/a		Construction Start/End n/a		
Objective Manage stormwater through the removal or mitigation of the impervious cover on the site.				
Outputs <ul style="list-style-type: none"> • Designs and permits • TBD 				
Sewershed MS4	Watershed Anacostia River	Subwatershed Stickfoot Branch	Ward 8	
Outcomes				
Stormwater Treatment Volume	Contributing Drainage Area	Impervious Surface Removed	Trees Planted	Linear Stream Feet Restored
TBD	TBD	TBD	TBD	n/a

Preconstruction





Construction *(to be added)*



Completion (*to be added*)