

DISTRICT  
DEPARTMENT  
OF THE  
ENVIRONMENT



Jenny Guillaume  
Environmental Protection Specialist  
RiverSmart Homes  
Watershed Protection Division

# Background: Tried in the past and failed.

- **Transportation difficulties –**
  - 35% of District households do not own cars
  - Those with cars typically have small cars
- **Homeowners have difficulties installing and/or maintaining BMPs**
  - Downspouts not or poorly disconnected
  - Dead trees
  - Rain barrels overflowing
- **City regulations**
  - Inspections of disconnections
  - Installation of rain gardens and permeable pavement



# Why Focus on Private Property?



- Federal lands – where most space is available but they are not often a willing partner
- Residential development makes up greatest land use in the District
- Area the slowest for redevelopment & least likely to require stormwater retrofits

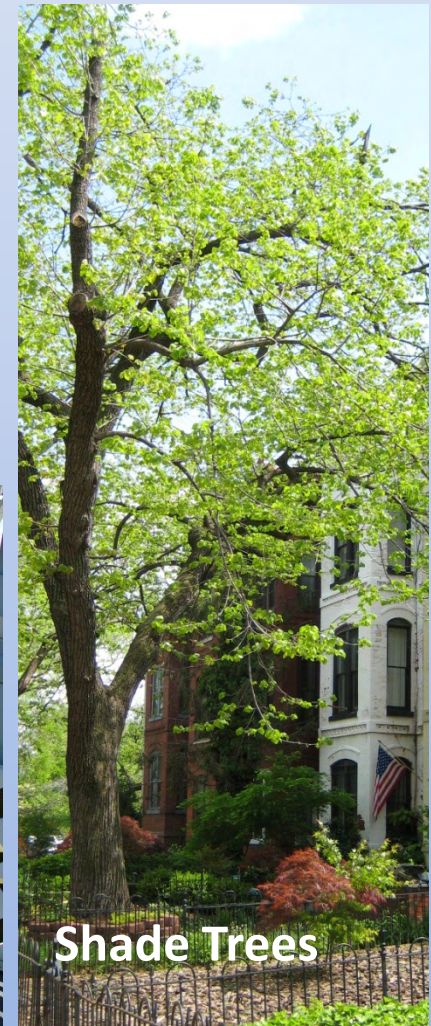
# *RiverSmart Homes* Defined:



- This District-wide program offers incentives to homeowners interested in reducing stormwater runoff from their properties.
- Homeowners receive up to \$1,200 in landscaping services for one or more of the following landscape enhancements: Shade Trees, Rain Barrels, Pervious Pavers, Rain Gardens and BayScaping.

# Goals of *RiverSmart Homes* :

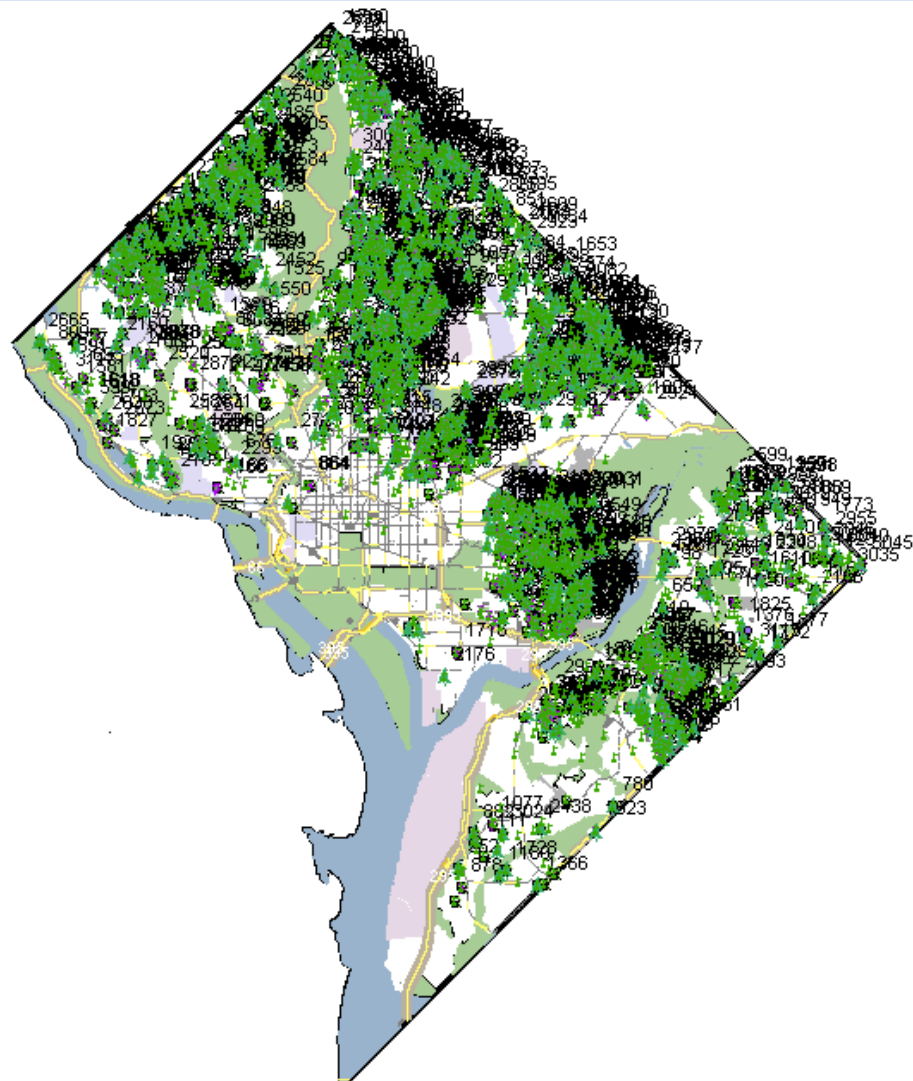
- Reduce quantity and improve quality of stormwater runoff
- Recharge groundwater
- Habitat diversity
- Promote water conservation
- Promote watershed stewardship



# A Snapshot of Today

- **Over 3,000 DC Homeowners interested in the program!**
- **City-wide Installations:**
  - 1,800+ audits completed
  - 1,100 rain barrels installed
  - 700 trees planted
  - 100 rain gardens installed
  - 200 BayScapes installed
  - 25 impervious surfaces removed





3 km

# RiverSmart Roof Tops



- \$5/sf up to \$20,000 rebate open to all
- \$7/sf (no cap) rebate target large roof retrofit



# RiverSmart Schools



# Chevy Chase Library

Before



After



A partnership with Friend of Rock Creek's Environment, Chevy Chase Citizens Association, and DC Department of Parks and Recreation.

# Takoma Park Recreation Center

Before



During



A partnership with DC Parks and Recreation  
and Friends of Takoma Park

# M Place SE Rain Gardens



A partnership with DC Department of Transportation