

The Chesapeake Bay TMDL

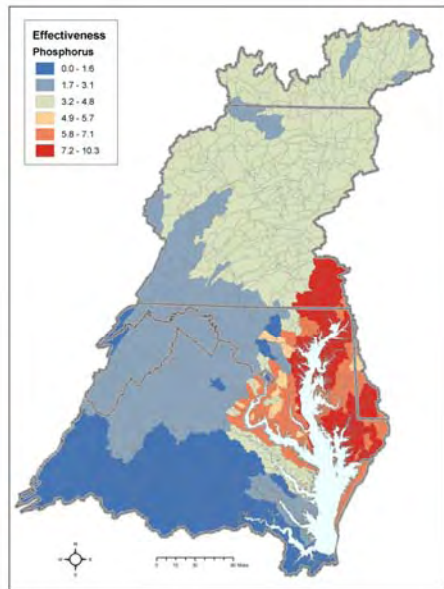
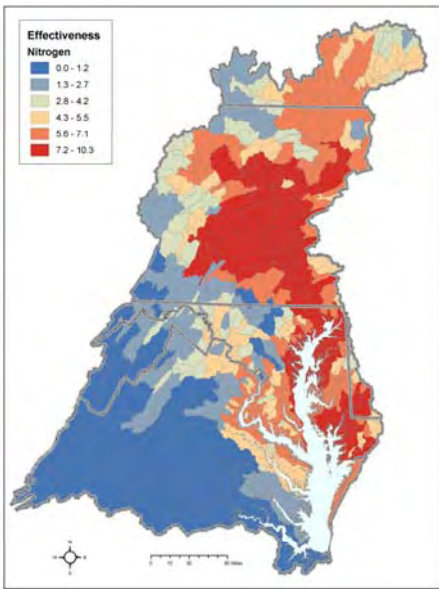


How to Keep Smiling, While Eating Less and Doing One Handed Push-ups All While Your Partners are Sitting on Your Back Saying “Faster, Smarter, More Assurance, and More Local”

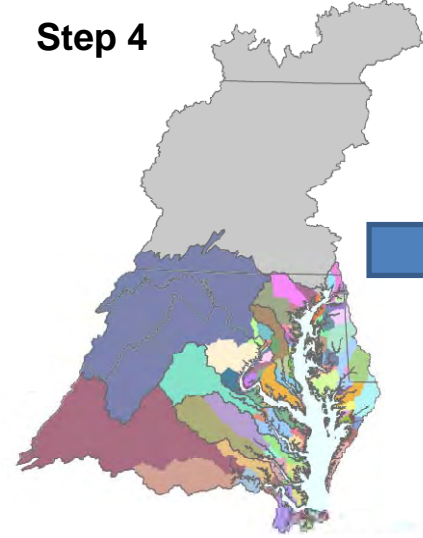
**Rich Batiuk
Associate Director for Science
U.S. EPA Region 3
Chesapeake Bay Program Office
June 23 2011**

Step 1

Developing a Bay Pollution Diet in Five Easy Steps



Step 4

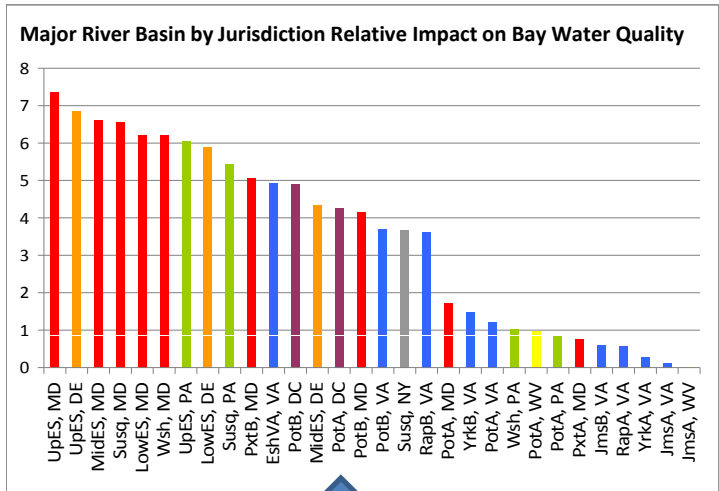


Step 5

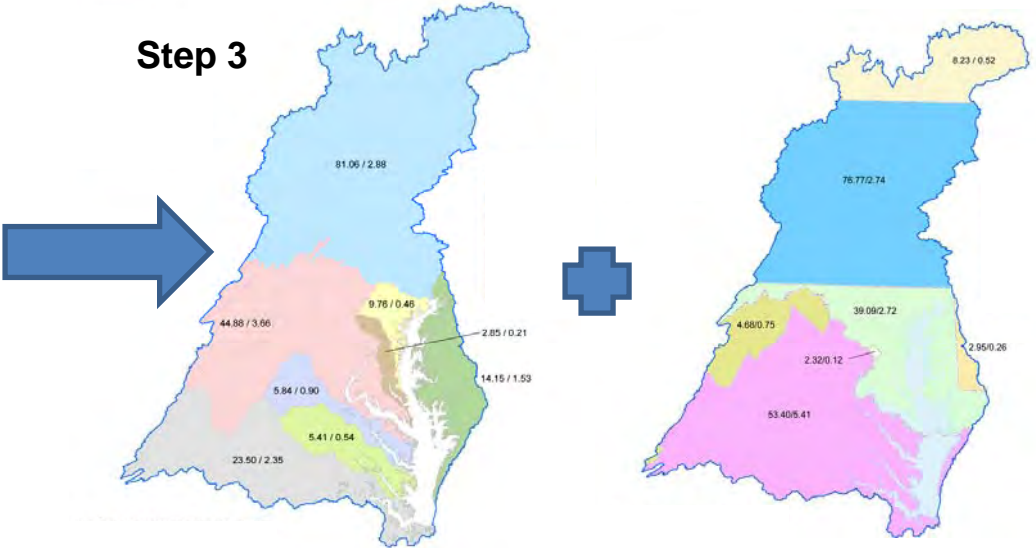
Table B2. Format for Submitting Phase I Waterfired Implementation Plan Outputs

No.	Mag. Basin	Impaired Segment	Unique Code	Source Sector*	Type†	NPDES Permit
MD	W. Shore	PATP	MWFF	Agriculture: AFO	Agg. WLA	MD000911
				Agriculture: AFO	LA	
				Subtotal: Agriculture		
				Wastewater: POTW	Ind. WLA	MD001702
				Wastewater: POTW	Ind. WLA	MD001643
				Wastewater: Indus. #1	Ind. WLA	MD001632
				Subtotal: Waterwater	Agg. WLA	MD000653
				Other	LA	
				LA/Total: Other	Agg. WLA	MD000605
				LA/Total: Other	Non-MEA	LA
				LA/Total: Other	MEAs	MD000645
				Subtotal: Stormwater	Agg. WLA	MD000639
				Subtotal: Stormwater	Ind. WLA	
				Subtotal: Stormwater	Agg. WLA	
				Other	LA	
				LA/Total: Other	Agg. WLA	MD000618
				LA/Total: Other	Non-MEA	LA
				LA/Total: Other	MEAs	MD000619
				Subtotal: Other	LA	
				Other	LA	
MD	W. Shore	SEVMS	MW/Ind	Agriculture: AFO	Agg. WLA	MD002014
				Agriculture	LA	
				Subtotal: Agriculture	Ind. WLA	MD001609
				Wastewater: POTW	Ind. WLA	MD001712
				Wastewater: POTW	Ind. WLA	MD001676
				Wastewater: Indus. #1	Ind. WLA	MD001632
				Wastewater: Indus. #2	Ind. WLA	MD001602
				Subtotal: Waterwater	LA	
				Other	LA	
				LA/Total: Other	Agg. WLA	MD000618
				LA/Total: Other	Non-MEA	LA
				LA/Total: Other	MEAs	MD000619
				Subtotal: Other	LA	
				Other	LA	
MD	W. Shore			Reservoir for Growth	WLA/LA	
MD	W. Shore					
				Total		

Step 2

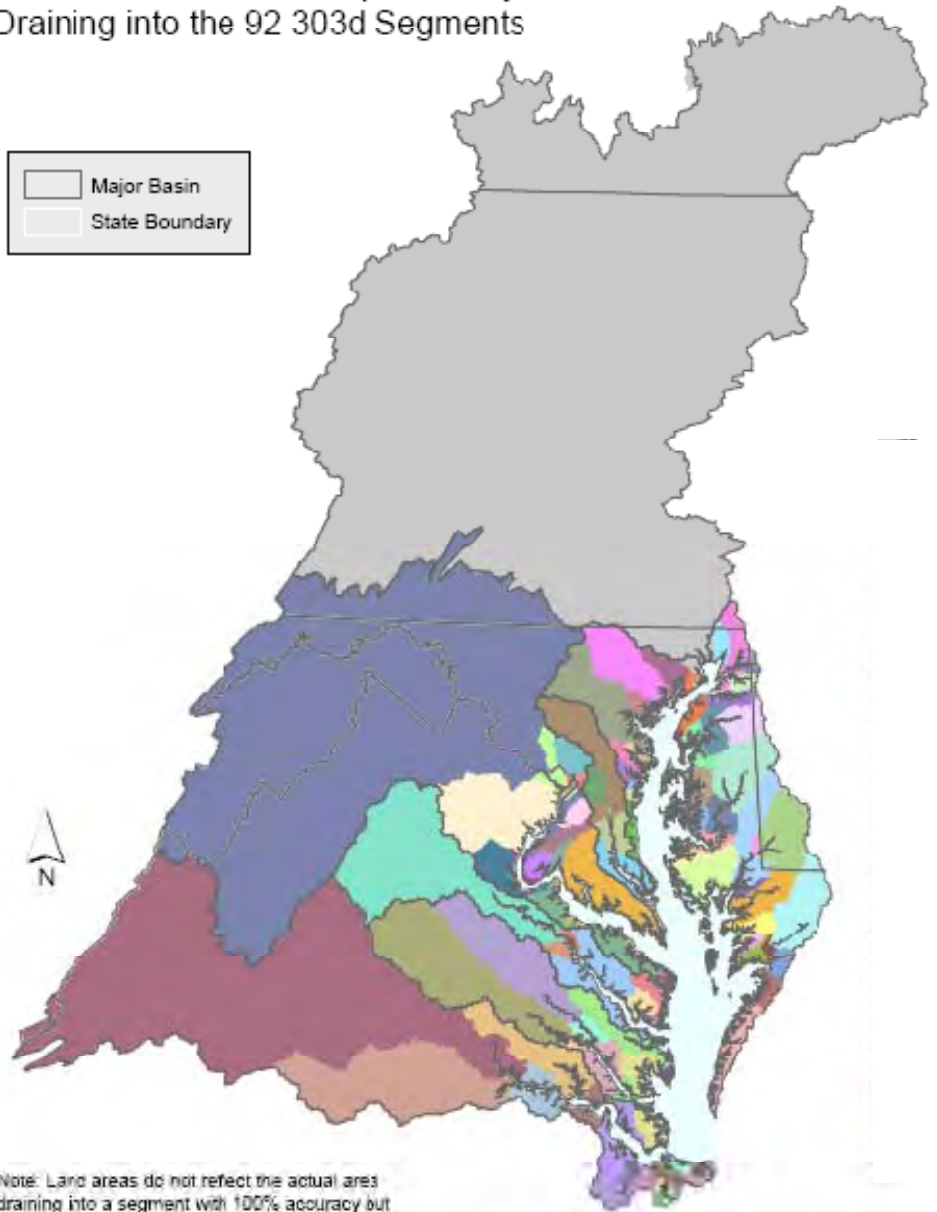


Step 3



Phase I WIP

Land Areas of the Chesapeake Bay Basin
Draining into the 92 303d Segments

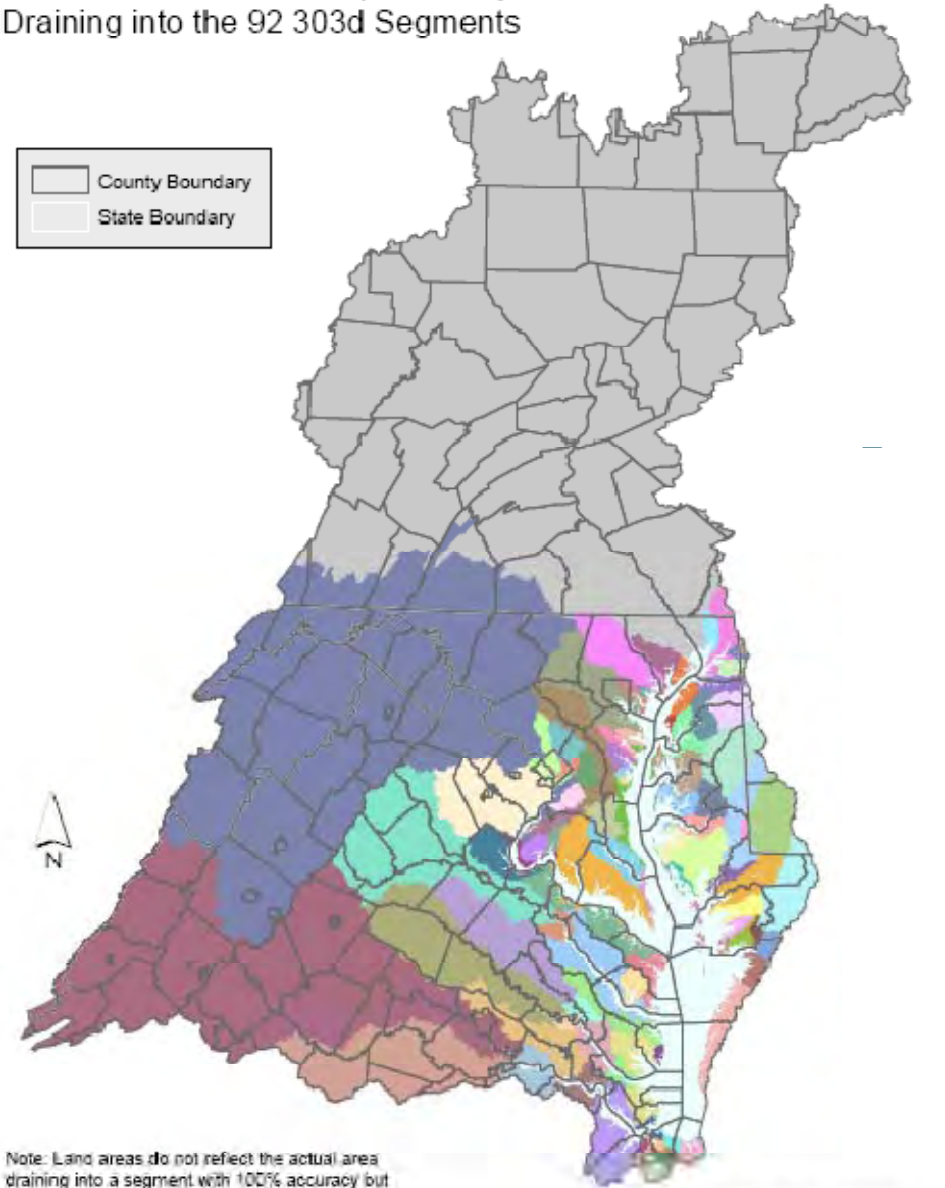


Note: Land areas do not reflect the actual area draining into a segment with 100% accuracy but are basically correct at the map scale.

Created 09/24/09 by HW. 0 20 40 60 Miles

Phase II WIP

Land Areas of the Chesapeake Bay Basin
Draining into the 92 303d Segments

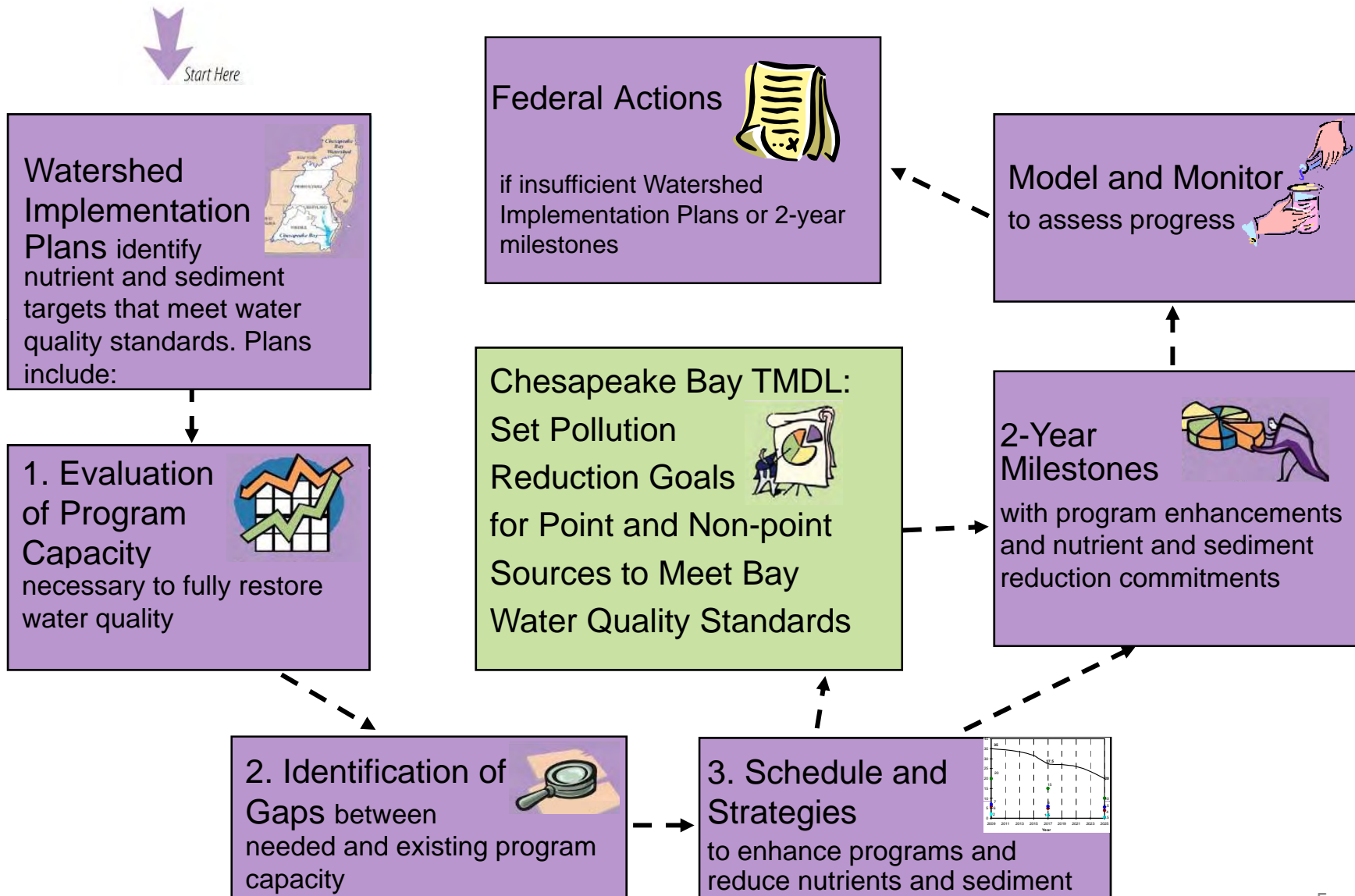


Note: Land areas do not reflect the actual area draining into a segment with 100% accuracy but are basically correct at the map scale.

Created 09/24/09 by HW. 0 20 40 60 Miles



Overview of Accountability Process



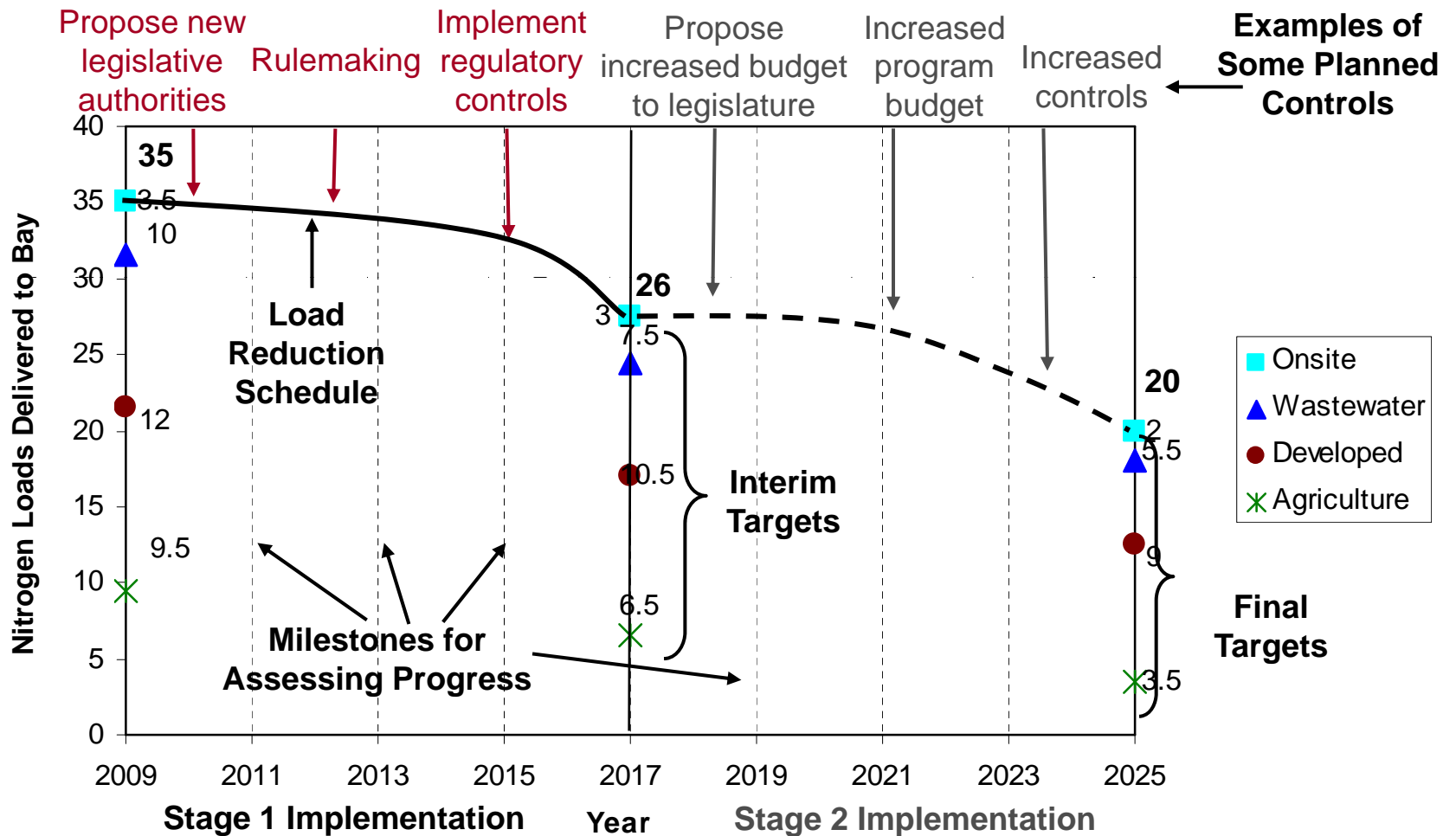
Three Tiers of EPA Oversight and Actions

- **Ongoing Oversight for ALL Chesapeake Bay Jurisdictions** – Ongoing program and permit reviews and assessments of TMDL and WIP implementation through Phased II and III WIPs and 2-year milestones (*most source sectors fell here*)
- **Enhanced Oversight** – Indication that EPA may consider backstop allocations and adjustments if Phase II WIPs don't show progress (*VA urban stormwater, PA agriculture and wastewater, WV urban stormwater and wastewater*)
- **Backstop Allocations & Adjustments** – Backstops were included in the final Bay TMDL (*NY wastewater; PA urban stormwater; and WV agriculture*)

		No Backstop Allocation		Backstop Allocations, Adjustments, and/or Actions	
		Ongoing Oversight and Actions	Enhanced Oversight and Actions	Backstop Adjustments and Actions	Backstop Allocations and Actions
NY	Agriculture				
	Stormwater				
	Wastewater				Reduce wastewater WLA to meet statewide allocation
PA	Agriculture		Possible future backstop adjustments		
	Stormwater			Shift 50% stormwater from LA to WLA	
	Wastewater		Individual allocations; Possible future backstop allocations		
VA	Agriculture				
	Stormwater		Possible future backstop adjustments		
	Wastewater				
WV	Agriculture			Shift 75% AFOs from LA to WLA	
	Stormwater		Possible future backstop adjustments		
	Wastewater		Individual allocations; Possible future backstop allocations		

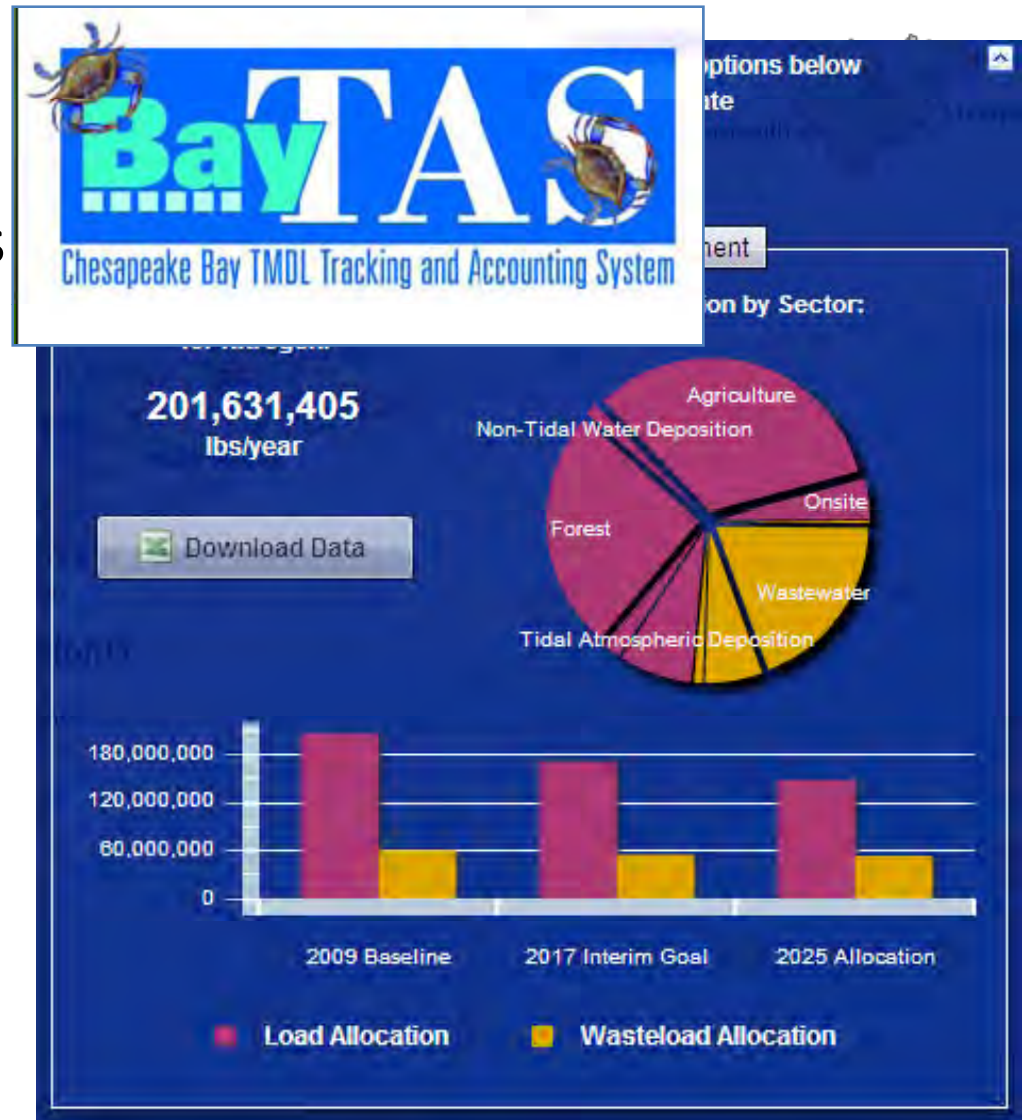
**Note: Jurisdictions not included in table have “ongoing oversight” for all agriculture, urban stormwater and wastewater.

TMDL 15 Year Timeline



Phase II WIPs: Part of Chesapeake Bay Accountability Framework

- WIPs
 - Phase I: Define strategies, propose TMDL allocations
 - Phase II: Refine strategies
 - Phase III: Mid-course adjustments
- 2-Year Milestones
- Track and Assess Progress
- Federal Actions, as necessary



Phase II Schedule

- Distributed Phase II WIP Guide for Jurisdictions, Schedule
- Distributed Phase II WIP Guide for Feds
- This week: distribute 2-Year Milestones Guide
- 6/30: Share proposed revised 19 state-basin allocations
- 7/15: Finalize revised 19 state-basin allocations
- 9/30: Preliminary 2012-13 milestone commitments submitted
- 12/1: Draft Phase II WIPs submitted to EPA
- 1/3: 2012-2013 milestone commitments submitted to EPA
- 1/31: EPA comments on draft Phase II WIPs to jurisdictions
- 3/30: Final Phase II WIPs submitted to EPA
- Propose revisions to the 2010 Bay TMDL



Questions



Rich Batiuk

Associate Director for Science

**U.S. Environmental Protection Agency
Chesapeake Bay Program Office**

410-267-5731

batiuk.richard@epa.gov

www.chesapeakebay.net