



GZEP Watershed Protection Projects

Emily Rice and Johnnie Philson
Department of Energy and Environment



AGENDA

- » About GZEP
- » Grant Overview and purpose
- » Review stormwater issues
- » Grant project areas
- » Who and how to apply
- » Scoring
- » Timeline
- » Q&A

ABOUT GZEP

- » DOEE's partnership with the Department of Employment Services' (DOES) Marion S. Barry Summer Youth Employment Program (SYEP)
- » Provides training and work experiences to approximately 350 teens and young adults ages 14-24
- » GZEP participants have the opportunity to learn from experts about the energy and environmental issues facing the District and gain hands-on experience working on community projects that will expose them to a variety of experiences and develop the skills necessary to compete for today's green jobs.

PURPOSE

- » Provide education, training, and hands-on activities to at least one cohort of GZEP participants for the full 6-week session

OVERVIEW

- » \$60,000 available
- » Each project can request up to \$15,000
- » A project must work with at least one GZEP cohort for full GZEP session, running from June 26-August 3.
- » Funding is provided on a reimbursement basis, advances available on a limited basis.
- » Grants are awarded through a competitive selection process.
- » Projects will generally run from date of grant award through August 31, 2018.

An aerial photograph of a city scene. In the foreground, a vast parking lot is filled with hundreds of cars, mostly from the mid-20th century. To the left, a large, multi-story building with many windows is visible. In the background, more city buildings are visible under a hazy sky. The text "Why is stormwater runoff an issue?" is overlaid in white, bold, sans-serif font across the middle of the image.

Why is stormwater runoff an issue?

When rain falls in the District.....





it runs off hard surfaces...



A narrow alleyway between a house and a fence. On the left is a house with light-colored horizontal siding. On the right is a wooden fence with white flowers hanging over it. A large green tree is in the background. The ground is wet and muddy. The text "and becomes Stormwater Runoff" is overlaid in white.

and becomes Stormwater Runoff

So... why do we care?

Trash



A photograph showing a dark, viscous liquid, likely oil, being poured from a yellow container into a metal storm drain on a wet asphalt surface. The liquid is creating a rainbow-like sheen as it flows. In the background, the lower portion of a vehicle and an orange traffic cone are visible. The text "Oil, gas, and other transportation -related pollutant runoff" is overlaid in white on the left side of the image.

**Oil, gas, and other
transportation -related
pollutant runoff**



Flooding

Stream bank erosion





GZEP Watershed Protection Projects



ELIGIBILITY

Project must meet the following eligibility criteria:

- » Be an eligible entity:
 - » Non-profit
 - » Faith-based organization
 - » University/educational institutions
 - » Private enterprises
- » Be located in the District
- » Provide curriculum and activities directly relevant to GZEP
- » Address one or more of the project areas

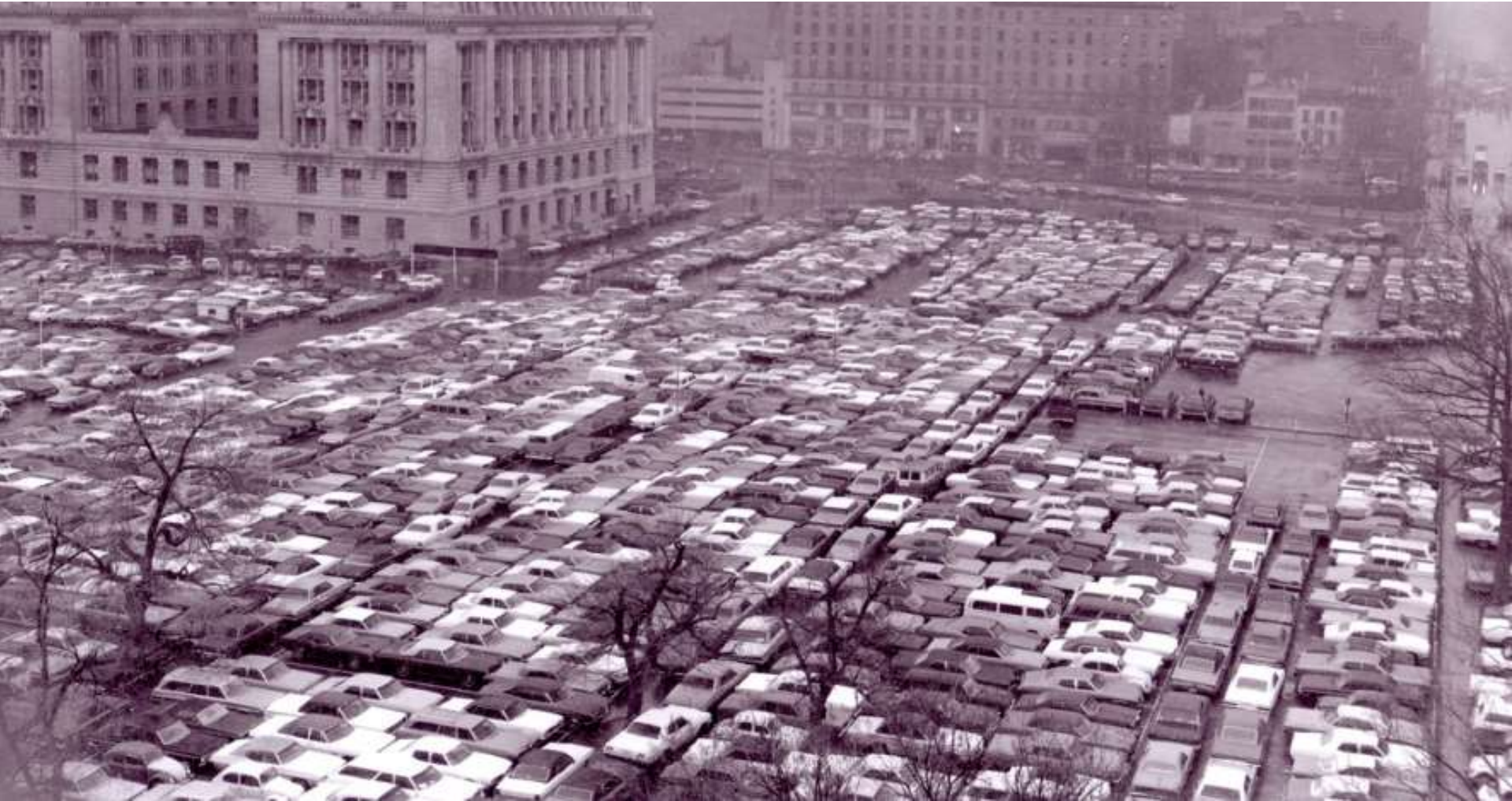
Projects are not eligible if:

- » It is required work
- » Is already being funded by another grant or contract
- » Is using invasive plant species, herbicides or pesticides

PROJECT AREAS

1. Install green infrastructure
2. Maintain existing green infrastructure
3. Provide pathways to green jobs
4. Restore native habitat
5. Litter clean up and causes of litter
6. Prevent pollution from entering District water bodies through stormwater runoff.
7. Engage communities, raise awareness, and bring about behavior change on issues impacting water quality
8. Commemorate 2018 as the “Year of the Anacostia”

1. INSTALL GREEN INFRASTRUCTURE



Green infrastructure allows stormwater to be absorbed into the ground, reducing the impact of stormwater runoff on District water bodies. Coupled with significant community engagement, even small installations can make a big difference.

Projects in this category should focus on providing GZEP participants with design and construction experience for small-scale green infrastructure projects.



2. INSPECT AND MAINTAIN EXISTING GREEN INFRASTRUCTURE



Green infrastructure already exists at many schools, residential properties, commercial buildings, and along roadways.

Examples:

- » Water trees at stream restoration sites, DPR sites, and schools
- » Inspect and provide simple maintenance, such as weeding, watering, and replanting, of GI installed through RiverSmart Homes.
- » Inspect and provide simple maintenance of GI at properties enrolled in RiverSmart Rewards.

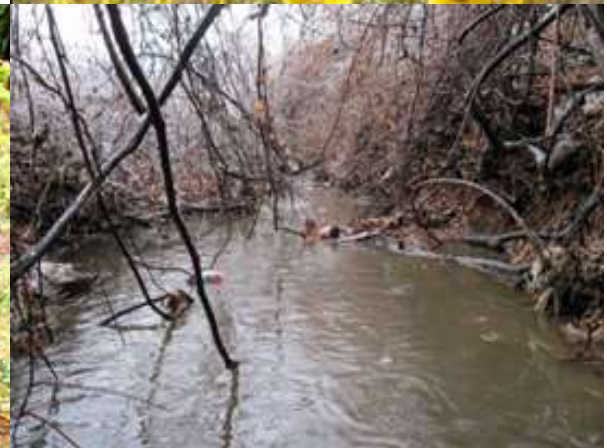


3. RESTORE NATIVE HABITAT



Many of District's natural areas are overrun by **invasive plant** species. Proposals in this category should focus on removing invasive species, replanting with natives, engaging residents, and creating new native habitats.

Proposals in this category should provide GZEP participants with knowledge about invasive species, including how to identify and safely remove them. Ideally, projects would involve replanting of the restored area with native plant species.



4. LITTER CLEAN UP OR ADDRESS CAUSES OF LITTER



Trash is one of the leading causes of pollution in the District's water bodies. Storm drains in the Municipal Separate Storm Sewer System (MS4) areas of the District lead directly to our streams.

Proposals involving litter cleanups can be in-stream or at DOEE-identified trash “hotspots” and should address causes of litter and result in behavior change.



5. POLLUTION PREVENTION



Stormwater runoff is the leading cause of stream impairment in urban areas. Many outdoor activities (product storage, manufacturing processing, loading/unloading operations, pet care) contribute to degraded water quality when proper measures are not followed

Examples:

- » Develop and help implement stormwater pollution prevention plans
- » Erosion and sediment control stabilization at DOEE-identified locations where GI is not appropriate due to steep slopes or infrastructure. This would include building small berm check dams, laying mulch, reducing compact soils, and planting native species.



6. ENGAGE, RAISE AWARENESS, CHANGE BEHAVIOR



Priority subject areas include stormwater management, trash, pollution prevention, and watershed restoration.

Examples:

- » Mark storm drains in targeted areas (DOEE provides materials and training)
- » Conduct targeted outreach on DOEE's RiverSmart Homes program in Wards 7 and 8, specifically in Congress Heights, Fairlawn, Deanwood, Benning Ridge, Marshall Heights, and Lincoln Heights.
- » Improve visibility of existing RiverSmart Homes projects through installation of yard signs (DOEE provides materials)
- » Educate on proper yard waste disposal with targeted outreach to property owners adjacent to natural areas.



7. COMMEMORATE 2018 AS THE “YEAR OF THE ANACOSTIA”



The Year of the Anacostia commemorates the 100th year anniversary of Anacostia Park and the many events and milestones that will be celebrated along the river in 2018.

Projects may include activities that improve water quality, promote sustainable development, and create opportunities on and along the Anacostia River.



GZEP PROGRAM DETAILS

- » A selected grantee must work with one GZEP cohort on Wednesdays and Thursdays for the GZEP program.
- » A cohort is a group of 30-50 GZEP participants assembled at a particular “assembly site.”
- » DOEE provides each assembly site with basic outdoor equipment and supplies including shovels, rakes, mulch, lawn mowers, bug spray, and first aid kits. Your proposed project budget must address additional supply needs.
- » DOEE hires 5 team leaders and 1 site manager for each assembly site. Each team leader manages 8-10 participants.
- » GZEP participants are paid an hourly wage. The project does not need to budget for participant wages.

2018 ASSEMBLY SITES

1. Kramer Middle School (1700 Q Street SE)
2. Ballou High School (3401 4th Street SE)
3. Phelps Architecture, Construction, and Engineering (ACE) High School (704 26th Street NE)
4. HD Woodson High School (540 55th Street NE)
5. LaSalle-Backus Education Campus (501 Riggs Road NE)

SCHEDULE

- » Team leader orientation: June 11-22; selected grantee must attend 2 days of orientation.
- » Program dates: June 26-Aug 3. Projects must take place on Wednesdays and Thursdays during this time.
- » Typical workday schedule:
 - » 9am arrival at assembly site
 - » ½ lunch
 - » 14-15 year olds dismissed at 1:30pm
 - » 16-24 year olds dismissed at 3:30pm
- » Be prepared with indoor activities!

SCHEDULE

Monday	Tuesday	Wednesday	Thursday	Friday
25 Orientation	June 26 DOEE Courses	27 GZEP WATERSHED PROJECTS	28 GZEP WATERSHED PROJECTS	29 Outdoor Project Seniors & Community
July 2 Educational Day or Field Trip	July 3 DOEE Courses	4 HOLIDAY	5 GZEP WATERSHED PROJECTS	6 Outdoor Project Seniors & Community
9 Educational Day or Field Trip	10 DOEE Courses	11 GZEP WATERSHED PROJECTS	12 GZEP WATERSHED PROJECTS	13 Outdoor Project Seniors & Community
16 Educational Day or Field Trip	17 DOEE Courses	18 GZEP WATERSHED PROJECTS	19 GZEP WATERSHED PROJECTS	20 Outdoor Project Seniors & Community
23 Educational Day or Field Trip	24 DOEE Courses	25 GZEP WATERSHED PROJECTS	26 GZEP WATERSHED PROJECTS	27 Outdoor Project Seniors & Community
30 Educational Day or Field Trip	31 DOEE Courses	August 1 GZEP WATERSHED PROJECTS	2 GZEP WATERSHED PROJECTS	3 Closing Event



TRANSPORTATION

Ideally a project will take place within walking distance of an assembly site; however, the project may take place off-site.

- » For projects located within a 5-block radius of the assembly site, participants can walk.
- » For projects located outside walking distance, you will need to indicate transportation details in Appendix 7 AND budget for them.

Projects are not eligible if:

- » It is required work
- » Is already being funded by another grant or contract
- » Is using invasive plant species, herbicides or pesticides

HOW TO APPLY

Use Application Form, Appendix 6

Compile all required documents listed in Section 3.4 of the RFA

Complete a project schedule of activities table (Appendix 7)

Complete a budget table (template Appendix 4)

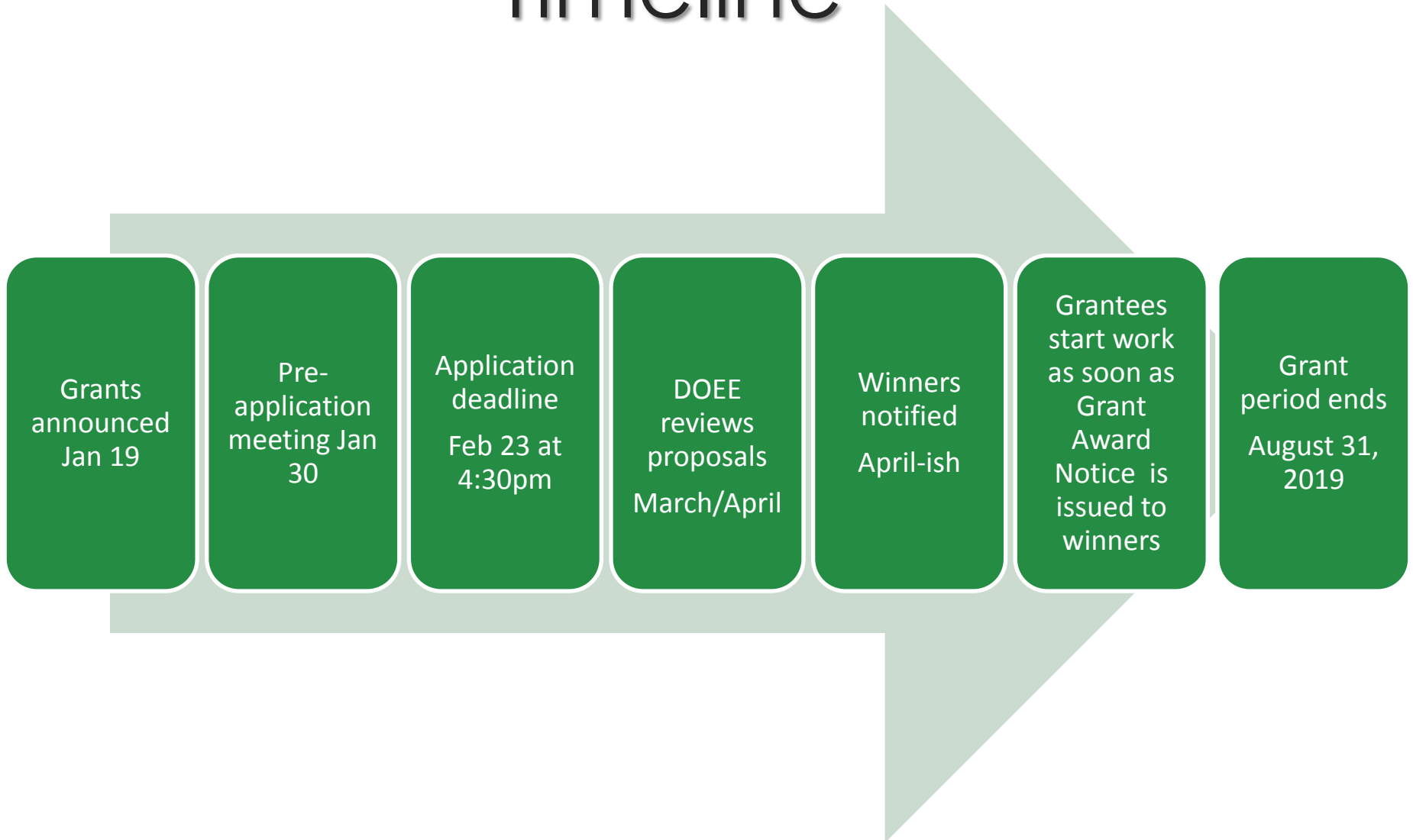
Submit everything by 4:30pm SHARP on February 23.

Submissions can be emailed or hand-delivered.

How projects will be scored:

Scoring Criteria	Points
Demonstrates the applicant's substantial knowledge of, and experience with issues of water quality and the impacts of stormwater runoff on District water bodies.	25
Demonstrates the applicant's substantial knowledge of and experience in implementing trainings, educational projects, and hands-on activities to youth ages 14-24	25
Demonstrates the applicant's substantial knowledge of and experience with connecting youth to jobs and internships in the green economy	25
Presents a clear and feasible plan for accomplishing project requirements and demonstrates that the applicant has the personnel in place to carry out the proposed project	10
Presents at least two indoor activities that can be executed on days when outdoor work is not appropriate.	5
Presents an adequate and reasonable budget and justification for the funds requested.	10
Applicants that are "physically located in the District"	5

Timeline





THANK YOU
QUESTIONS?

Emily Rice
202-535-2679
emily.rice@dc.gov

