

# Green Zone Environmental Program Watershed Protection Projects

**Emily Rice**

Watershed Protection Division

**Johnnie Philson**

GZEP Program Manager

★ ★ ★ DEPARTMENT  
OF ENERGY &  
ENVIRONMENT

# AGENDA

- » About GZEP
- » Grant overview and purpose
- » Review stormwater and watershed issues
- » More about the grant and application process
- » Timeline
- » Q&A

# About GZEP

- DOEE's partnership with the Department of Employment Services' (DOES) Marion S. Barry Summer Youth Employment Program (SYEP)
- Provides training and work experiences to approximately 350 teenagers and young adults ages 14-24
- GZEP participants have the opportunity to learn from experts about the energy and environmental issues facing the District and gain hands-on experience working on community projects that will expose them to a variety of experiences and develop the skills necessary to compete for today's green jobs.

# Purpose of this RFA

- » To fund projects that will educate and train District youth and young adults, ages 14-24, participating in GZEP during the 2019 summer session.
- » Selected grantees are expected to work with 35-50 participants on Wednesdays and Thursdays.
- » The projects should raise awareness and lead to behavior change on issues of water quality and the impacts of stormwater runoff on the District's water bodies.

# Overview

- » \$80,000 available
- » Each project can request up to \$20,000
- » A project must work with at least one GZEP cohort for full GZEP session, running from June 24-August 2, 2019.
- » Funding is provided on a reimbursement basis, no advances for this short-term grant.
- » Grants are awarded through a competitive selection process.
- » Projects will run from date of grant award through August 31, 2019.

## WHO CAN APPLY?

- Nonprofits
- Faith-based organizations
- Government agencies
- Universities
- Private enterprises



**Why is stormwater runoff an issue?**



**When rain falls in the District.....**







it runs off hard surfaces...



A narrow alleyway between a white building and a wooden fence, with water flowing down the path. The path is wet and reflective, suggesting recent rain. The white building on the left has horizontal siding. The wooden fence on the right is made of vertical planks. A large tree with green leaves and white blossoms is on the right side of the fence. In the background, there are more trees and a glimpse of a street.

and becomes Stormwater Runoff

# So... why do we care?



# Trash





A photograph of a wet asphalt surface, likely a parking lot or street, after rain. In the foreground, a black metal storm drain grate is visible. A large, iridescent oil spill is spreading across the pavement, reflecting light in rainbow colors. The spill originates near the drain and extends towards the background. In the upper left corner, the lower portion of a vehicle, including a white wheel and a yellow component, is partially visible. The overall scene illustrates the problem of transportation-related pollutant runoff.

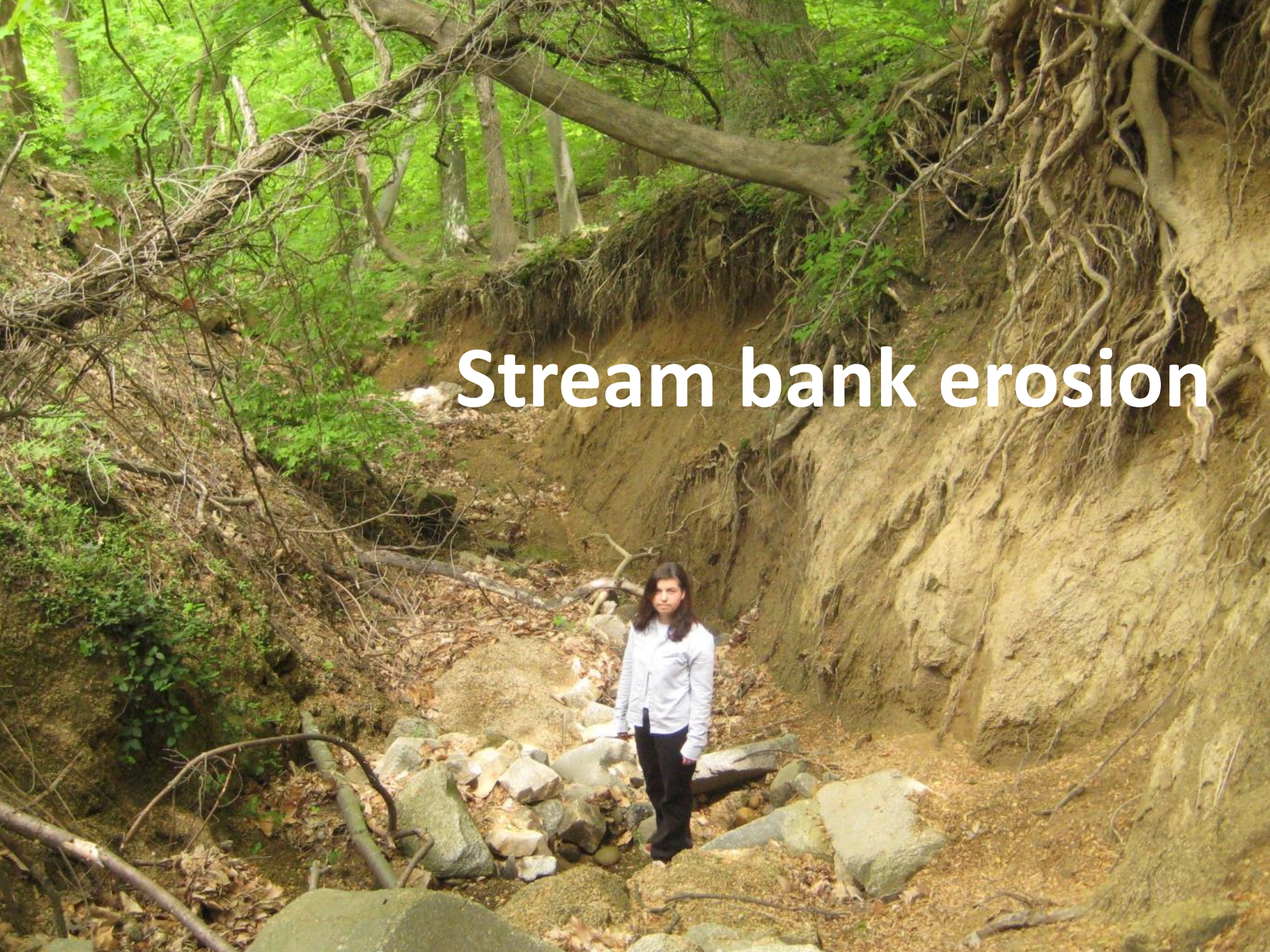
**Oil, gas, and other  
transportation -related  
pollutant runoff**



Flooding



# Stream bank erosion



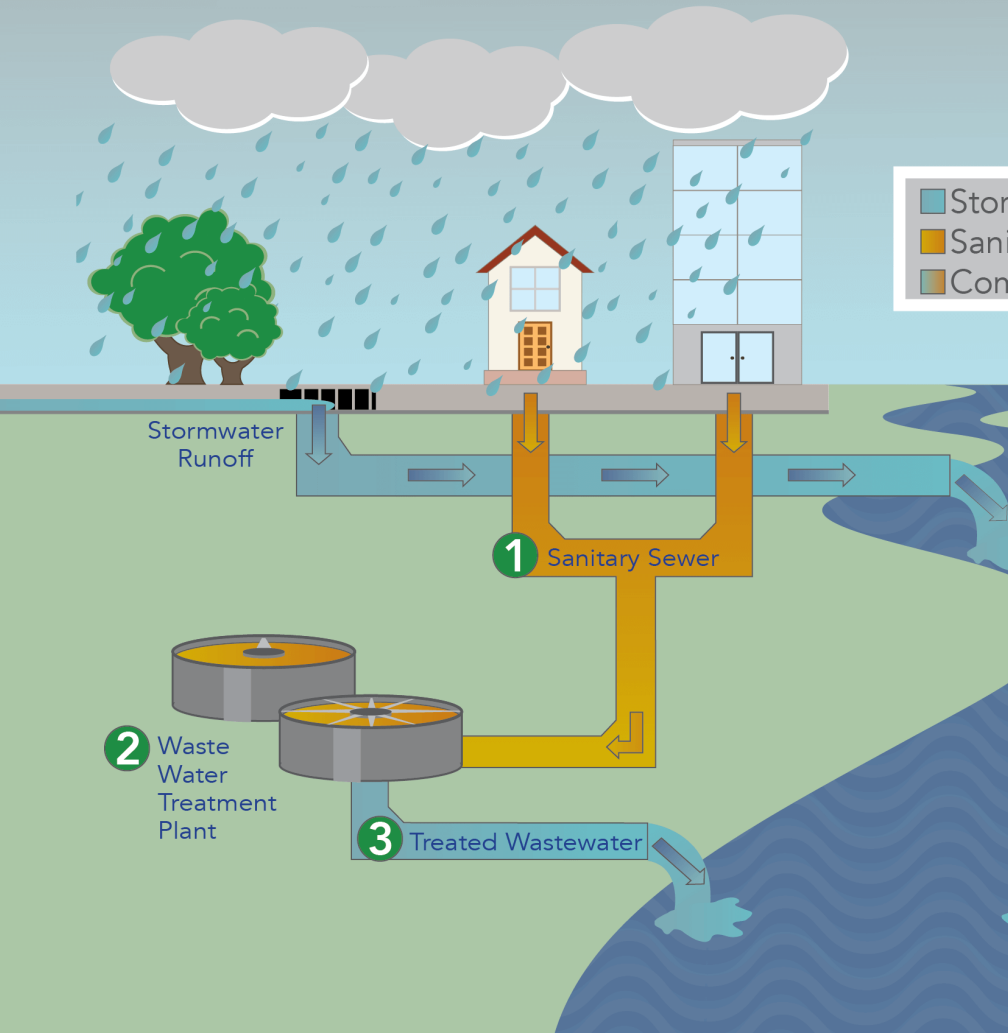


# MS4

## MUNICIPAL SEPARATE STORM SEWER SYSTEM

inspiregreen™

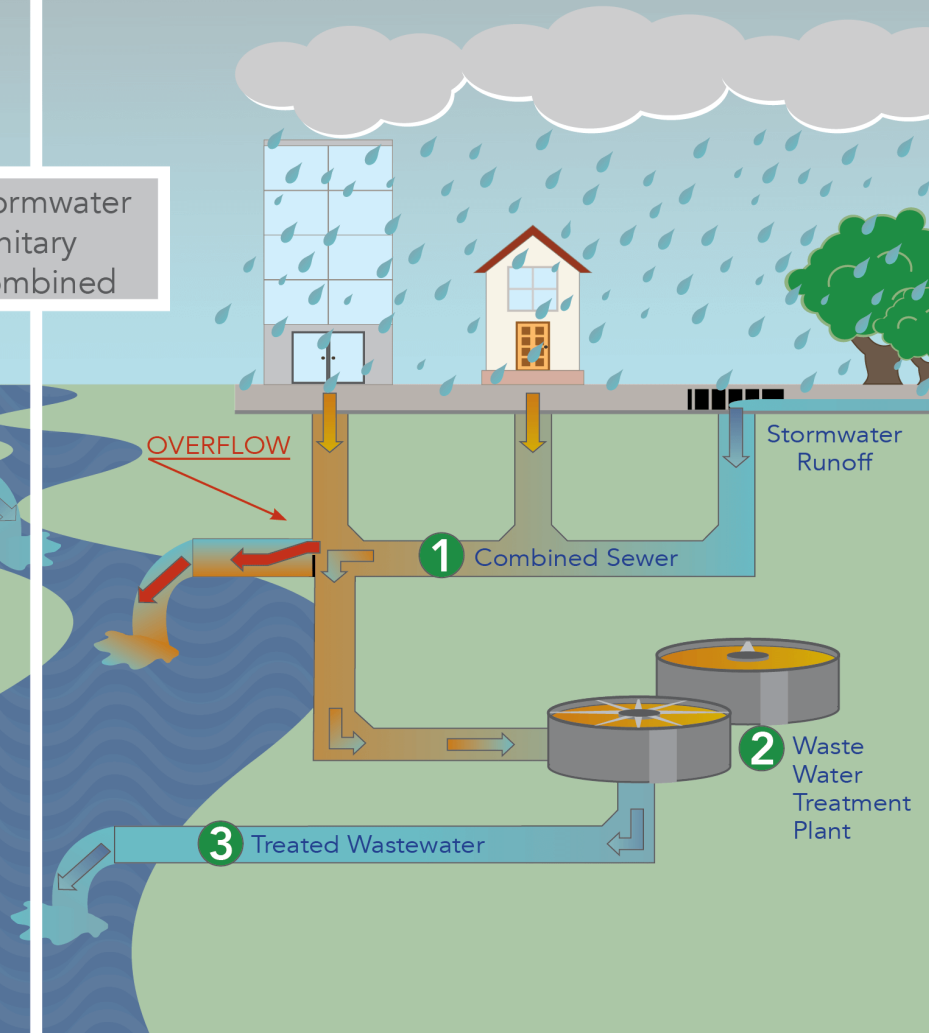
This system uses **separate pipes** for sanitary sewage and stormwater flow.

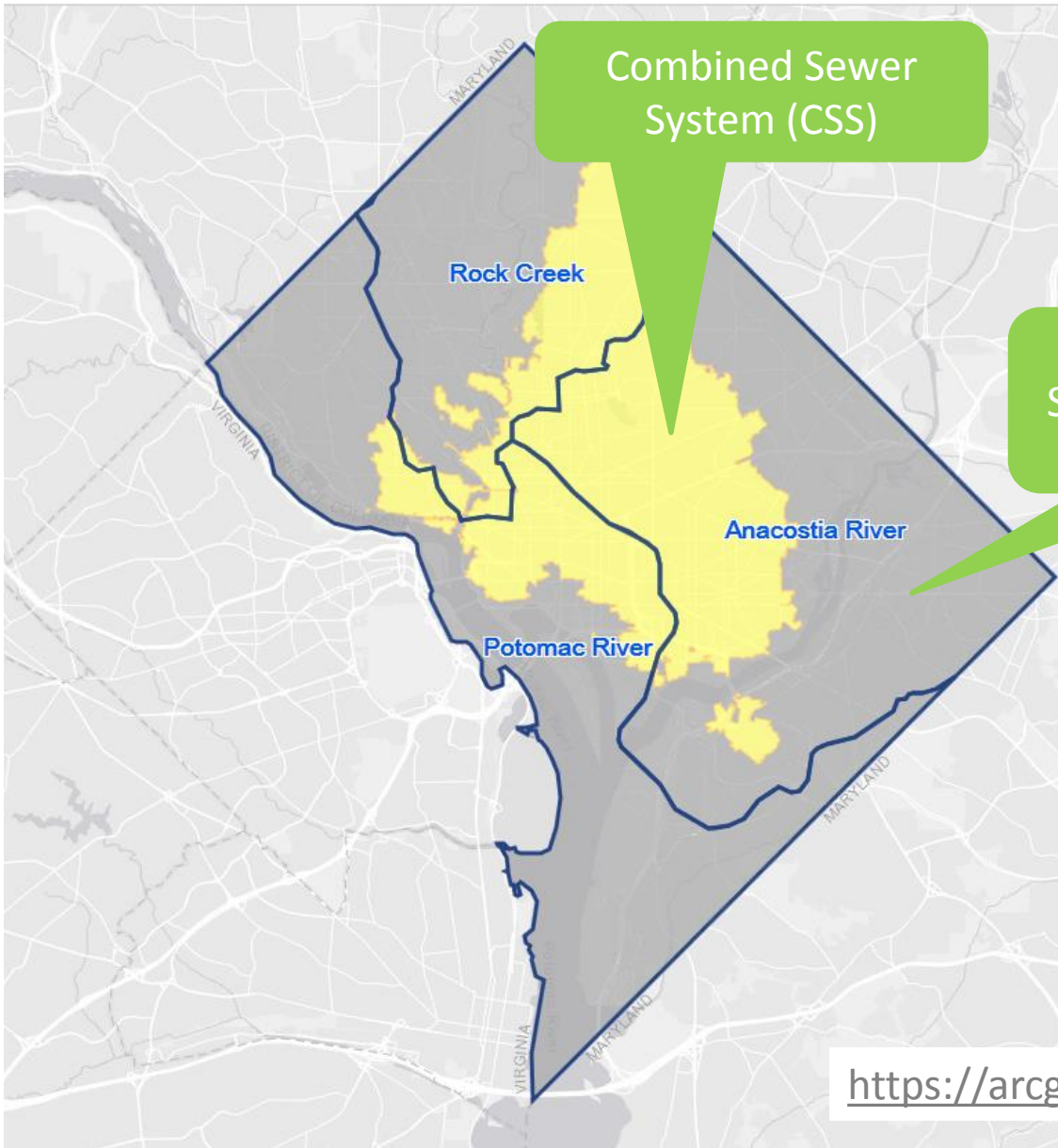


# CSS

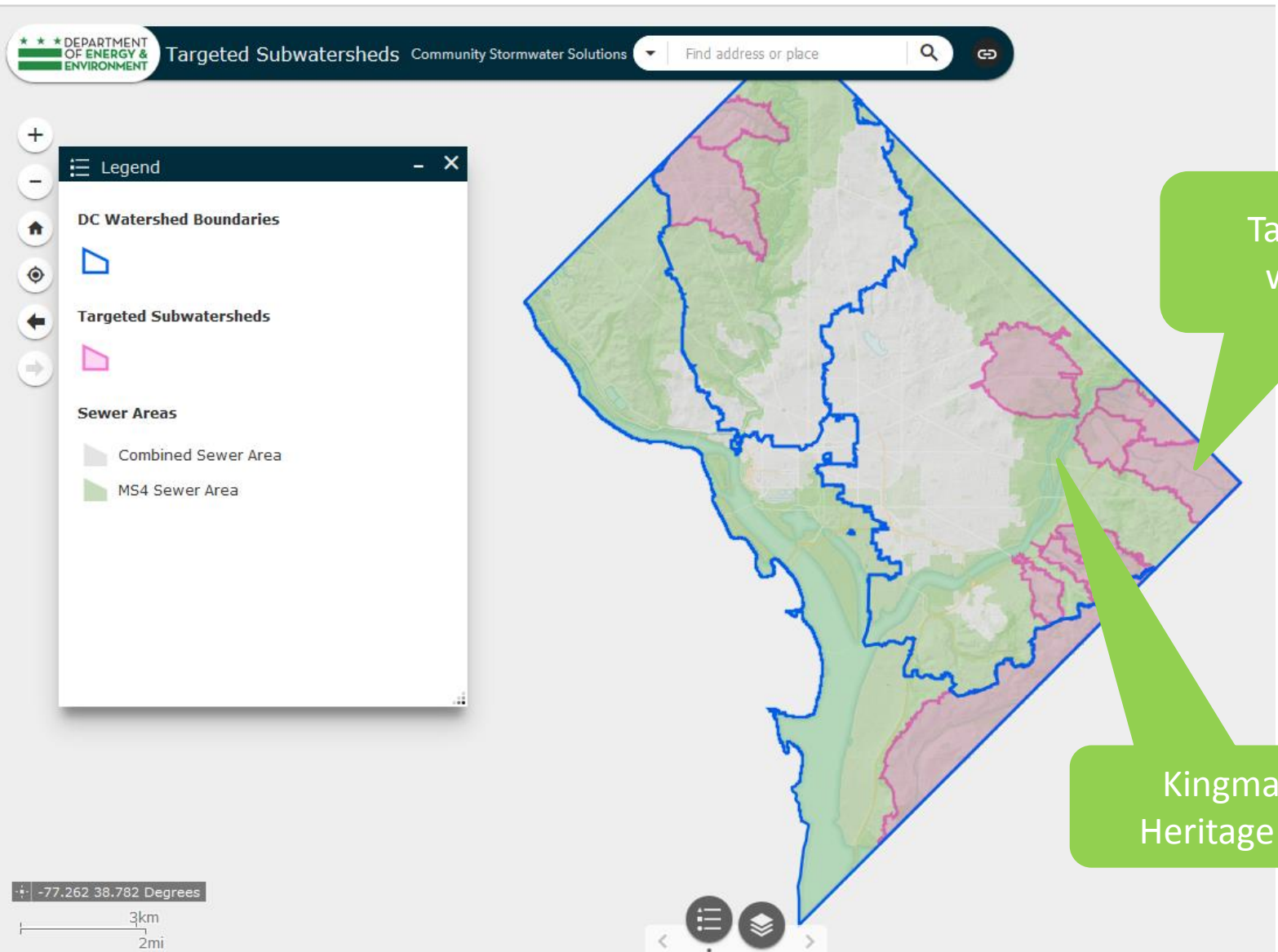
## COMBINED SEWER SYSTEM

This system uses the **same pipes** for sanitary sewage and stormwater flow.





<https://arcg.is/1GGn9W>



Targeted Subwatersheds

Kingman and Heritage Islands





# GZEP Watershed Protection Projects



# ELIGIBILITY

## **Project must meet the following eligibility criteria:**

- » Be an eligible entity:
  - » Non-profit
  - » Faith-based organization
  - » University/educational institutions
  - » Private enterprises
- » Project must be located in the District
- » Provide curriculum and activities directly relevant to GZEP
- » Address one or more of the project areas

## **Projects are not eligible if:**

- » It is required work
- » Is already being funded by another grant or contract
- » Is using invasive plant species, herbicides or pesticides

# PROJECT AREAS

1. Site assessment and design of green infrastructure
2. Install green infrastructure
3. Inspect and maintain existing green infrastructure
4. Restore natural habitat
5. Educate and engage communities on issues affecting watershed health
6. Reduce sources of pollution to District water bodies
7. Foster engagement in, restoration of, and support for, existing efforts at Kingman and Heritage Islands, including projects in the adjacent communities
8. Clean up an area impacted by high volumes of litter and address causes of litter



# 1. SITE ASSESSMENT AND GI DESIGN



**Green infrastructure** allows stormwater to be absorbed into the ground, reducing the impact of stormwater runoff on District water bodies. Coupled with significant community engagement, even small installations can make a big difference.

Projects in this category should expose GZEP participants to the site assessment and design process for one or more GI types and address co-benefits (flooding, pedestrian safety, solar/garden plots, heat island).

## 2. INSTALL GREEN INFRASTRUCTURE



Projects in this category should focus on providing GZEP participants with construction experience for a small-scale GI project.



# 3. INSPECT AND MAINTAIN EXISTING GI



Projects in this category should provide GZEP participants with knowledge about invasive species, including how to identify and safely remove them and teach participants about native plants.



# 4. RESTORE NATURAL HABITAT



Projects in this category should provide GZEP participants with knowledge about invasive species, including how to safely remove them and teach participants about native plants, including identification and planting techniques.

DOEE's priority areas for invasive species removal and native plantings are locations within the Targeted Subwatersheds and at any of DPR's forested areas.

## 5. EDUCATE AND ENGAGE COMMUNITIES ON ISSUES AFFECTING WATERSHED HEALTH



Projects in this category should educate GZEP participants on the existing efforts around watershed protection and engage them in activities that encourage residents to become watershed stewards.



# 6. REDUCE SOURCES OF POLLUTION TO DISTRICT WATER BODIES



Projects in this category should educate GZEP participants on one of the following topics:

- Integrated pest management techniques
- Composting as an alternative to fertilizer use
- Erosion controls
- Inspect District-owned facilities for material and equipment contributing to stormwater pollution

# 7. FOSTER ENGAGEMENT IN, RESTORATION OF, KINGMAN AND HERITAGE ISLANDS



Projects in this category should produce an increased sense of local stewardship and more local knowledge of the islands' natural resources including:

- Invasive species removal and native plantings
- Engagement with neighboring communities
- Wayfinding and improving access to the island



## 8. LITTER CLEAN UP AND ADDRESS CAUSES OF LITTER



The main priority for litter cleanups is areas within the MS4. Litter prevention projects should address the causes of litter and result in behavior change.

# GZEP PROGRAM DETAILS

- » A selected grantee must work with one GZEP cohort on Wednesdays and Thursdays for the GZEP program.
- » A cohort is a group of 35-50 GZEP participants assembled at a particular “assembly site.”
- » DOEE provides each assembly site with basic outdoor equipment and supplies including shovels, rakes, mulch, lawn mowers, bug spray, and first aid kits. Your proposed project budget must address additional supply needs.
- » DOEE hires 5 team leaders and 1 site manager for each assembly site. Each team leader manages 8-10 participants.
- » GZEP participants are paid an hourly wage. The project does not need to budget for participant wages.



# 2019 ASSEMBLY SITES

1. Phelps Architecture, Construction, and Engineering (ACE) High School (704 26<sup>th</sup> Street NE)
2. HD Woodson High School (540 55<sup>th</sup> Street NE)
3. Hughes Memorial Church (5231 Cloud Place NE)
4. TBD
5. TBD

# SCHEDULE

- » Team leader orientation: June 10-21; selected grantee must attend 2 days of orientation.
- » Program dates: June 24-Aug 2. Projects must take place on Wednesdays and Thursdays during this time.
- » Typical workday schedule:
  - » 9am arrival at assembly site
  - » ½ lunch
  - » 14-15 year olds dismissed at 1:30pm (about 15 per site)
  - » 16-21 year olds dismissed at 2:30pm (about 15 per site)
  - » 22-24 year olds dismissed at 3:30pm (about 10 per site)
- » Selected grantees will participate in weekly debriefings with GZEP team leads
- » Be prepared with indoor activities!



# SCHEDULE

Monday	Tuesday	Wednesday	Thursday	Friday
24 <b>Orientation</b>	June 25 DOEE Courses	26 GZEP WATERSHED PROJECTS	27 GZEP WATERSHED PROJECTS	28 Outdoor Project Seniors & Community
July 1 Educational Day or Field Trip	July 2 DOEE Courses	3 GZEP WATERSHED PROJECTS	4 <b>HOLIDAY</b>	5 Outdoor Project Seniors & Community
8 Educational Day or Field Trip	9 DOEE Courses	10 GZEP WATERSHED PROJECTS	11 GZEP WATERSHED PROJECTS	12 Outdoor Project Seniors & Community
15 Educational Day or Field Trip	16 DOEE Courses	17 GZEP WATERSHED PROJECTS	18 GZEP WATERSHED PROJECTS	19 Outdoor Project Seniors & Community
22 Educational Day or Field Trip	23 DOEE Courses	24 GZEP WATERSHED PROJECTS	25 GZEP WATERSHED PROJECTS	26 Outdoor Project Seniors & Community
29 Educational Day or Field Trip	30 DOEE Courses	31 GZEP WATERSHED PROJECTS	August 1 GZEP WATERSHED PROJECTS	2 <b>Closing Event</b>



# TRANSPORTATION

Ideally a project will take place within walking distance of an assembly site; however, the project may take place off-site.

- » For projects located within a 5-block radius of the assembly site, participants can walk.
- » For projects located outside walking distance, you will need to indicate transportation details in Appendix 7 AND budget for them.



# PROJECT OUTCOMES

1. GZEP participants' knowledge of the impacts of stormwater runoff on water quality will increase.
2. Participants will have engaged in hands-on activities, training, and work experience that helps to build their resume and increase job readiness in the fields of watershed protection, stormwater management, or related fields.
3. Interested participants will have been placed on a clear pathway to internships and employment opportunities in the fields of watershed protection, stormwater management, or related fields of work.

# PROJECT DELIVERABLES

1. Provide one GZEP cohort with education, training and hands-on experience on Wednesdays and Thursdays during 2019 GZEP session.
2. Provide a Project Schedule of Activities that includes a detailed plan for the activities, curriculum, and transportation for DOEE review by April 30
3. Participate in 2 orientation days.
4. Participated in a close-out meeting with DOEE.
5. Participate in GZEP job fair week of July 22.
6. Participate in weekly debriefings with GZEP team leads at the assembly site.
7. Provide a brief weekly summary report.
8. Support a DOEE close-out presentation.
9. Provide a draft summary report by Aug 15.
10. Provide a final report.



# HOW TO APPLY

- ✓ Use Application Form, Appendix 6
- ✓ Compile all required documents listed in Section 3.3 of the RFA
- ✓ Complete a project schedule of activities table (Appendix 7)
- ✓ Complete a budget table (template Appendix 4)
- ✓ **Submit everything by 4:30pm SHARP on February 15.**
- ✓ Submissions can be emailed or hand-delivered.

# How projects will be scored:

Scoring Criteria	Points
Demonstrates the applicant's substantial knowledge of, and experience with issues of water quality and the impacts of stormwater runoff on District water bodies.	20
Demonstrates the applicant's substantial knowledge of and experience in implementing trainings, educational projects, and hands-on activities to youth ages 14-24	20
Demonstrates the applicant's substantial knowledge of and experience with connecting youth to jobs and internships in the green economy	20
Presents a clear and feasible plan for accomplishing project requirements and demonstrates that the applicant has the personnel in place to carry out the proposed project	20
Presents at least three indoor activities that can be executed on days when outdoor work is not appropriate.	5
Presents an adequate and reasonable budget and justification for the funds requested.	10



# Timeline

Grants  
announced  
Jan 4

Pre-  
application  
meeting  
Jan 17

Application  
deadline  
Feb 15 at  
4:30pm

DOEE  
reviews  
proposals  
March

Winners  
notified  
Early April

Grantees  
start work  
as soon as  
Grant  
Award  
Notice is  
issued to  
winners

Grant  
period  
ends  
August 31,  
2019



THANK YOU  
QUESTIONS?

Emily Rice  
202-535-2679  
[emily.rice@dc.gov](mailto:emily.rice@dc.gov)

