

STORMWORKS

OUR PRODUCTS

Are designed to capture rainwater and stormwater runoff before they overflow our sewers and threaten the health of our rivers.

OUR AIM

Is to provide simple solutions that mitigate stormwater problems. We provide homeowners and businesses with the products and information they need to make measurable improvements for their community.

OUR EXPERIENCE

We've used our decade of experience designing and installing stormwater management systems to create an innovative, aesthetically appealing, affordable rain container... the StormWorks Hydra

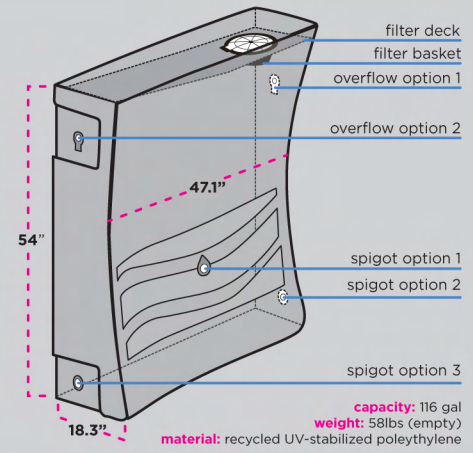
THE HYDRA

The StormWorks Hydra is designed to fit along the edges, corners, and flat surfaces of any house.

It has a slim, modern design that fits in narrow spaces between houses, behind shrubs, or neatly up against the side of your house to blend in with your landscape.

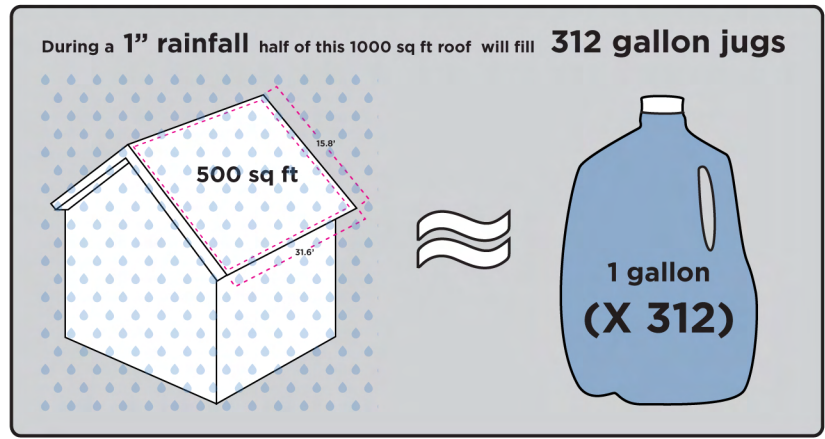
Thank you for purchasing the StormWorks Hydra! Please read this entire guide before you begin assembly and installation.

stormworkspgh.com /StormWorksPGH @StormWorksPGH



1. WHY HARVEST RAIN WATER?

- 1** Rainwater is soft, untreated water that is healthier for your plants & soil
- 2** Collecting rainwater reduces stormwater runoff and sewage overflows
- 3** The StormWorks Hydra can save you money on your water bill



2. WHAT'S INCLUDED WITH YOUR HYDRA?

- 1 FILTER BASKET**
8" diameter mosquito proof filter (1)
- 2 PHILLIPS SCREWS**
filter securing screws (4)
- 3 OVERFLOW ELBOW**
1.5" elbow (1)
- 4 THREADED PLUG**
1.5" plug (1)
- 5 BRASS SPIGOT**
.75" spigot (1)
- 6 THREADED PLUGS**
.75" plug (2)
- 7 OVERFLOW TUBING**
12' long (1)

***A downspout diverter kit, 15' garden hose, and flex-spout are included for allegheny county residents only (not pictured here).**

3. MAINTENANCE!

IT'S IMPORTANT TO PERFORM A FEW TASKS TO KEEP YOUR HYDRA WORKING EFFICIENTLY

STORMWORKS HYDRA MAINTENANCE TIPS

- 1 WINTERIZE**
When temperatures drop below freezing, empty Hydra and switch diverter
- 2 CLEAN FILTER**
Clean leaves and debris out of filter regularly

- 1 WINTERIZE STORMWORKS HYDRA!**
Empty and disconnect Hydra before winter to avoid freezing conditions
**we recommend using a downspout diverter*

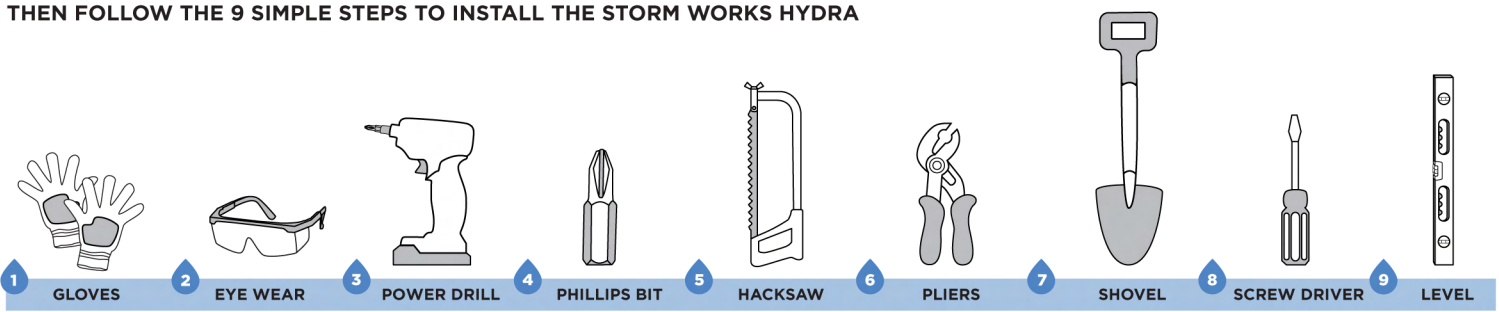
- 2 CLEAN FILTER BASKET!**
Clean debris out of the filter to prevent clogging or overflows

- 3 DRAIN STORMWORKS HYDRA!**
Drain Hydra between rain events to maximize collection and reduce overflows

- 4 DIRECT OVERFLOW!**
Direct overflow to a permeable surface away from your house's foundation

4. QUICK INSTALL GUIDE

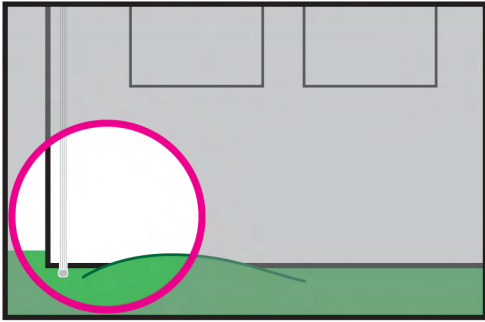
BEFORE YOU BEGIN, CHECK TO BE SURE YOU HAVE THE NECESSARY TOOLS
 THEN FOLLOW THE 9 SIMPLE STEPS TO INSTALL THE STORM WORKS HYDRA



For more detailed instructions and downloadable guide visit www.stormworkspgh.com

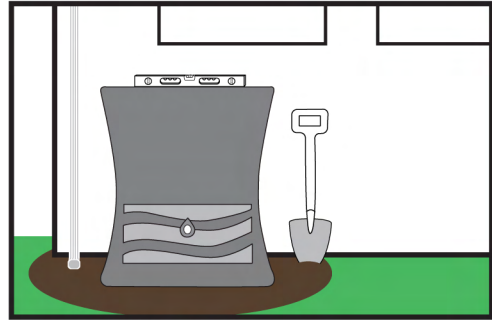
*please note the items above are not included

1 DETERMINE LOCATION



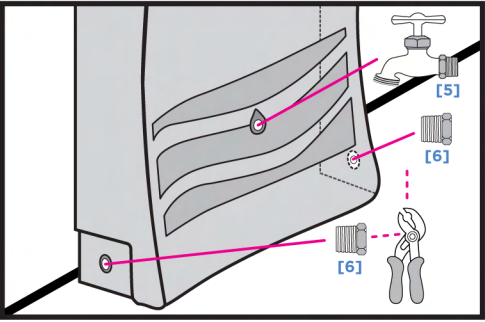
- The StormWorks Hydra container should be placed either directly under or near a downspout

2 LEVEL AND POSITION



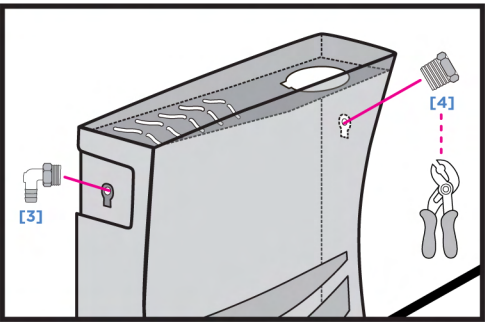
- Level ground with **shovel***
- Check with **measuring level***
- Utilize paver blocks or gravel if necessary

3 SPIGOT ATTACHMENTS



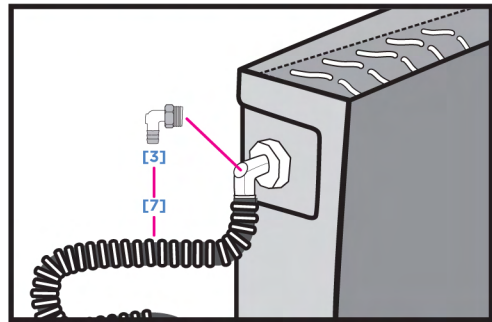
- Screw **brass spigot [5]** into desired spigot opening
- Screw **.75" threaded plugs [6]** into additional spigot openings and tighten with **pliers***

4 OVERFLOW ATTACHMENTS



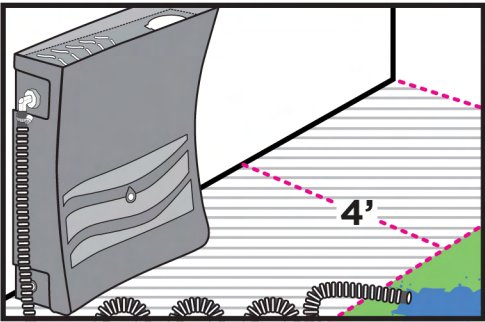
- Screw **overflow elbow [3]** into desired overflow opening
- Screw **1.5" threaded cap [4]** into additional overflow opening and tighten with **pliers***

5 OVERFLOW HOSE ATTACHMENTS



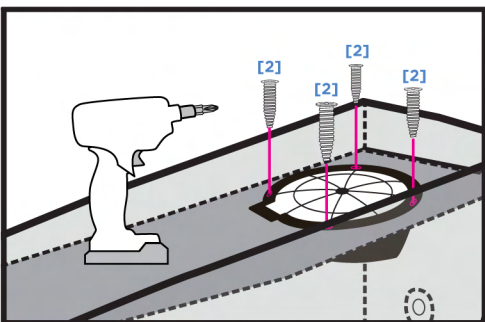
- Place the **overflow tube [7]** onto **overflow elbow[3]**

6 DIRECT OVERFLOW



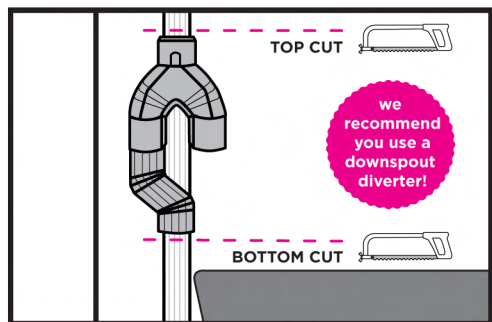
- Direct the **overflow tube [7]** onto permeable surface
- Must be at least 4-6' away from house foundation

7 ATTACH FILTER



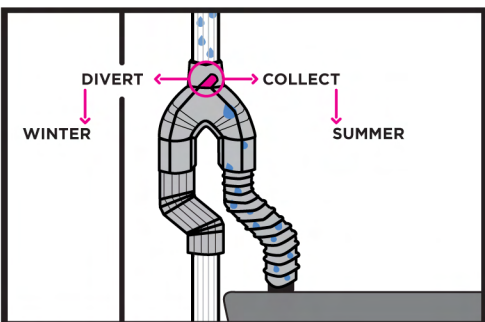
- Place the **8" filter basket [1]** into opening on filter deck
- If desired secure with **Phillips head screws [2]** and tighten with **power drill***

8 MEASURE AND SAW DOWNSPOUT



- Measure top and bottom of downspout diverter
- Mark and saw downspout with **hacksaw***
- Connect downspout diverter

9 REDIRECT WATER



- Once secure switch downspout diverter to begin harvesting rainwater
- Flex-a-Spout or Downspout Elbows can also be used