



WELCOME TO
**KINGMAN
HERITAGE**
ISLANDS

KINGMAN ISLAND
ENVIRONMENTAL
EDUCATION CENTER
ENVIRONMENTAL PARK
DESIGN TEAM

KINGMAN ISLAND COMMUNITY ADVISORY GROUP

MAY 30, 2019



GOVERNMENT OF THE
DISTRICT OF COLUMBIA
MURIEL BOWSER, MAYOR

AGENDA

1. Introductions
2. Kingman Island CAG: Recap
3. DOEE's Progress
 - a) Contracting Update & Project Timeline
 - b) Interim Projects Update
4. The Role of the Kingman CAG
5. Discussion

LAST KINGMAN CAG MEETING (2.5.19)

Issues Discussed

- Access to Kingman Island from adjacent neighborhoods to the Benning Road entrance.
- Access to the Benning Road gate and future parking availability at RFK Lot 6.
- The role of the Kingman Island Community Advisory Group.

DOEE'S PROGRESS

1. Contracting
 - a) Change of contracting vehicle
 - b) Projected Timeline

2. Interim Projects
 - a) Community Walk
 - b) Community Stormwater Solutions Grants Awarded
 - c) Boating Access Grant Awarded
 - d) Mussels Study Grant Published - to be awarded
 - e) RiverCorps Grant
 - f) Etc.

CONTRACTING UPDATE & PROJECTED TIMELINE

DELIVERABLE	PLANNED DURATION DATE/DATE OF COMPLETION
Solicitation Published (Design-Build Contract)	June 2019
Review & Evaluation	July - October 2019
Award Phase	November - January 2020
Design & Construction Phase	January 2020-December 2022
Post-Construction Phase	January 2023-December 2024
INTERIM PROJECTS	Ongoing

INTERIM PROJECTS

- ☐ Tactical Urbanism Pilot (Community Walk)
- ☐ Community Stormwater Solutions (CSS) Grants
- ☐ High Water Mark Grant
- ☐ Green Zone Environmental Program (GZEP) Grants
- ☐ Mussels Grant
- ☐ Invasive Removal
- ☐ Tree Planting on Heritage Island
- ☐ Vernal Pool Restoration (RiverCorps)
- ☐ Boating Access Grant



TACTICAL URBANISM

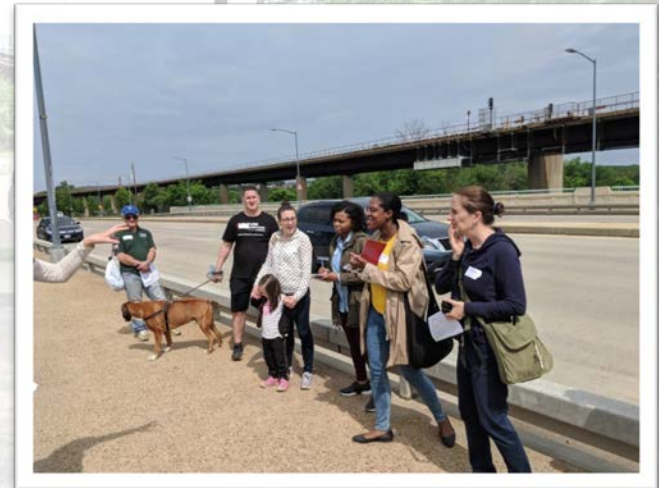
Tactical Urbanism is an approach to neighborhood building that uses short-term, low-cost, and scalable interventions to catalyze long-term change.



COMMUNITY WALK TO KINGMAN ISLAND



COMMUNITY WALK TO KINGMAN ISLAND



COMMUNITY WALK TO KINGMAN ISLAND

Community Comments and Suggestions:

1. Install a big sign announcing River Terrace.
2. Remove graffiti from bridge; clean/powerwash concrete panels on bridge.
3. **Don't feel safe walking next to fast moving cars.** Need buffer between vehicular traffic and pedestrians/cyclists on sidewalk; need higher rail.
4. **Need bike lane.** Pedestrian and cyclist interaction awkward. Not enough space for both to maneuver comfortably.
5. **Need pedestrian lights along Benning Road;** don't feel safe walking across the bridge at night.
6. Grass along path is overgrown.
7. **Maintain trees/manage invasives along walking path and in park.**
8. Sidewalk needs repair. It is a trip hazard and has drainage issues at some parts.
9. Artwork on metro bridge should honor John Mercer Langston (Langston Golf Course's namesake) and other notable African American figures and historical events in the area.
10. **The fence is uninviting,** looks like a prison for trees.
11. Use/create water bike program to water edible garden.
12. **Have signage that includes the islands' hours of operation.**
13. Have signage that announces Benning Road as part of the Anacostia River trail.
14. Install emergency blue lights along Benning Road.
15. **New more visible, more colorful entrance sign; Remove old Anacostia Waterfront Corporation sign.**



COMMUNITY WALK TO KINGMAN ISLAND

Benning Road Entrance Redesign

Goals: To create low cost, low maintenance, temporary & actionable landscape design that brings attention to Kingman Island from Benning Road.

Suggestions

1. Create a fun entrance
 - a) Taller, bolder, visible, relevant park signage
 - b) Recessed fence
 - c) Usable sculptural elements
2. Wayfinding in the street
 - a) Colorful ballards on median
 - b) Painted metro bridge to define entrance corridor
 - c) Colorful banners on existing lampposts
3. Edible forest garden
 - a) Permaculture - native, low maintenance, edible (fruit and nut trees, vegetables, herbs, mushrooms, berries)
4. New permeable path



HIGH WATER MARK

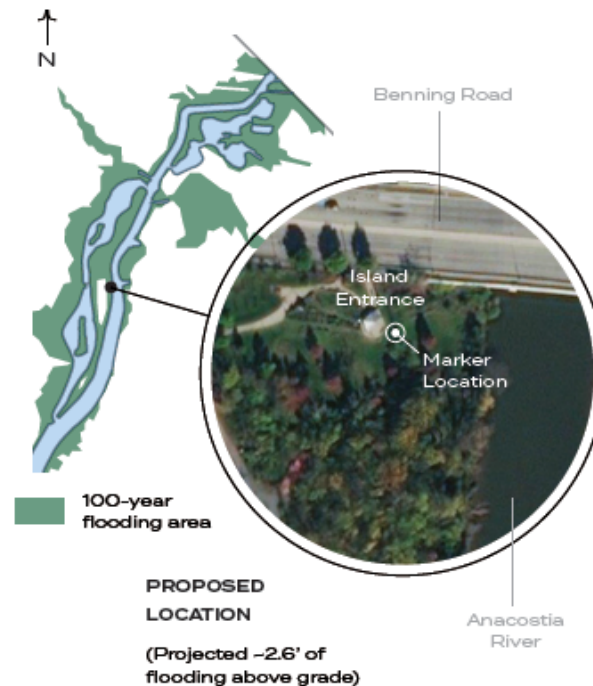
DC HIGH WATER MARK PROJECT/ KINGMAN ISLAND

THE DC HIGH WATER MARK PROJECT is a grant commissioned by the **Department of Energy and Environment**—in partnership with **FEMA**—to provide innovative means of flood awareness to at-risk communities.

Grant recipients **Curry Hackett** and **Patrick McDonough** are working to develop and implement a suite of educational and quasi-architectural experiences to promote certain communities' comprehension of flood risk. After hosting a webinar with key stakeholders, we are using the 100-year flood base elevation to identify communities that would most benefit from the project's proposal.

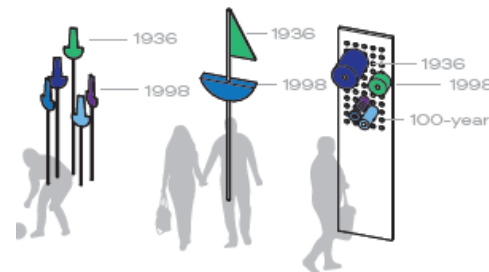
KEY DATES

MAY 25	Virtual visual preference survey
JUNE 21	In-person design thinking session
JULY	ANC and CO meetings
SEPTEMBER	Installation

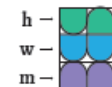


POTENTIAL IMPLEMENTATION

Recommended approaches for visual language and data visualization.



HIGH WATER MARK



HIGH WATER MARK



A close-up photograph of a white gutter pipe pouring water onto a small green seedling in dark soil. The water is captured mid-pour, creating a dynamic splash. The background is a soft, out-of-focus green.

YOUR CHARGE.





DISCUSSION. QUESTIONS. CONTACTS.

HAMID KARIMI, HAMID.KARIMI@DC.GOV
ASTERIA HYERA, ASTERIA.HYERA@DC.GOV

