

District's Local Planning Goals

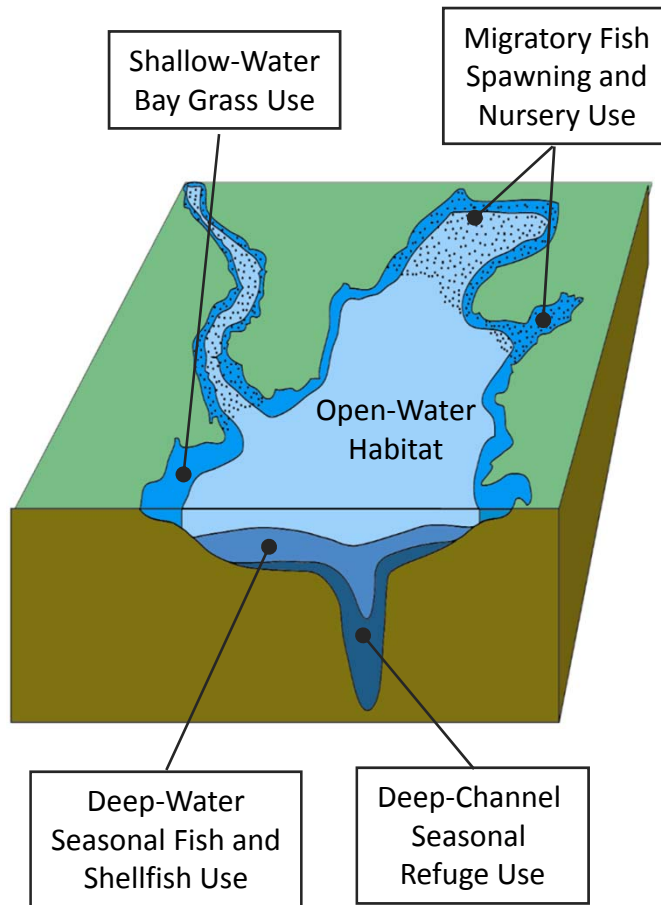
Katherine Antos, Branch Chief
Partnering & Environmental Conservation Branch
Department of Energy & Environment

DOEE CAST Workshop
October 19, 2018

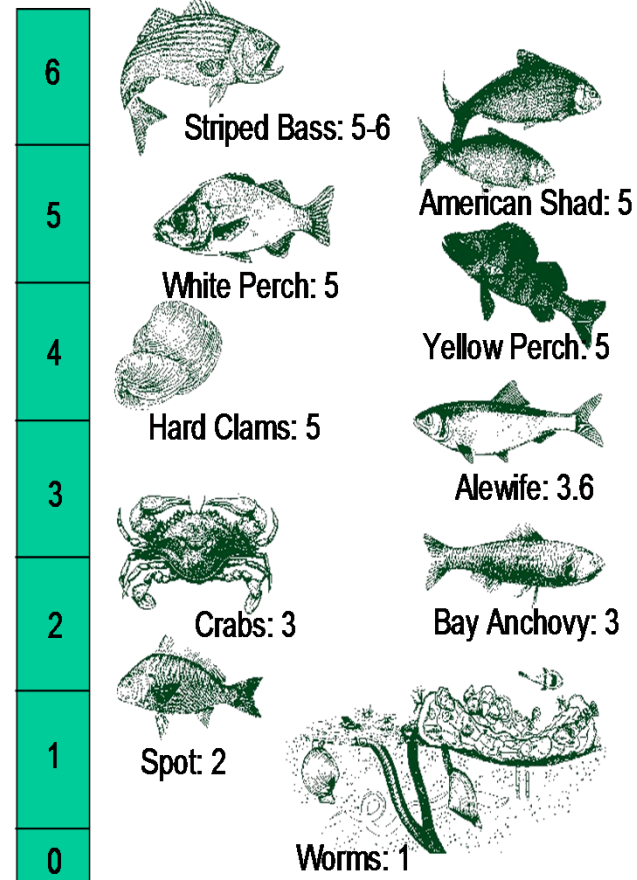


@DOEE_DC

Value of Chesapeake Bay to Fish and Wildlife



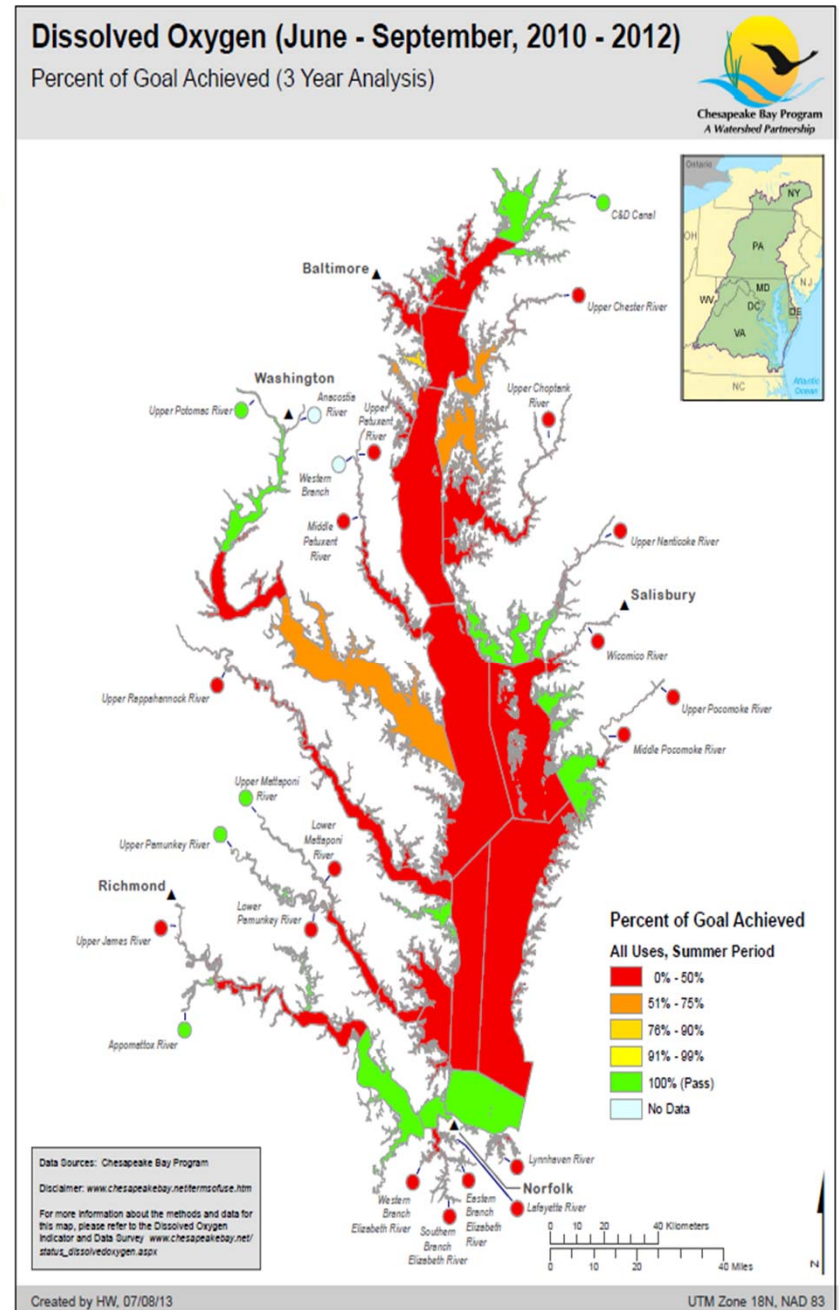
Oxygen Requirements (mg/L) of Bay Species



What the Chesapeake Needs

- Enough Air: Dissolved Oxygen
- Enough Light: Water Clarity/Bay Grass Abundance
- Not Too Much Algae: Chlorophyll a

To make this happen, must reduce nitrogen, phosphorus and sediment pollution to the Chesapeake

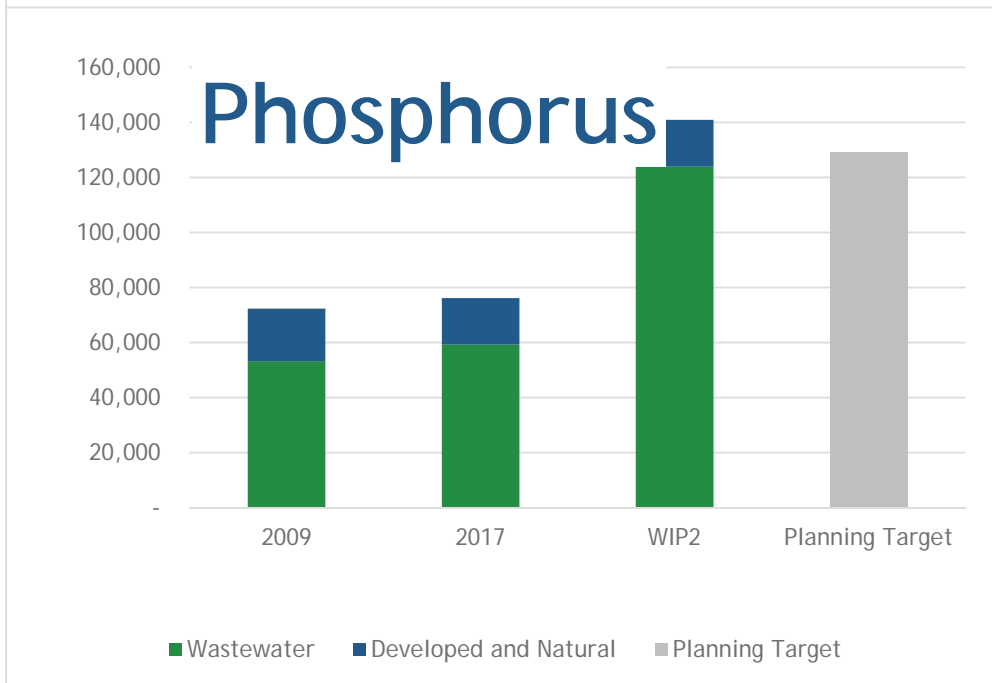
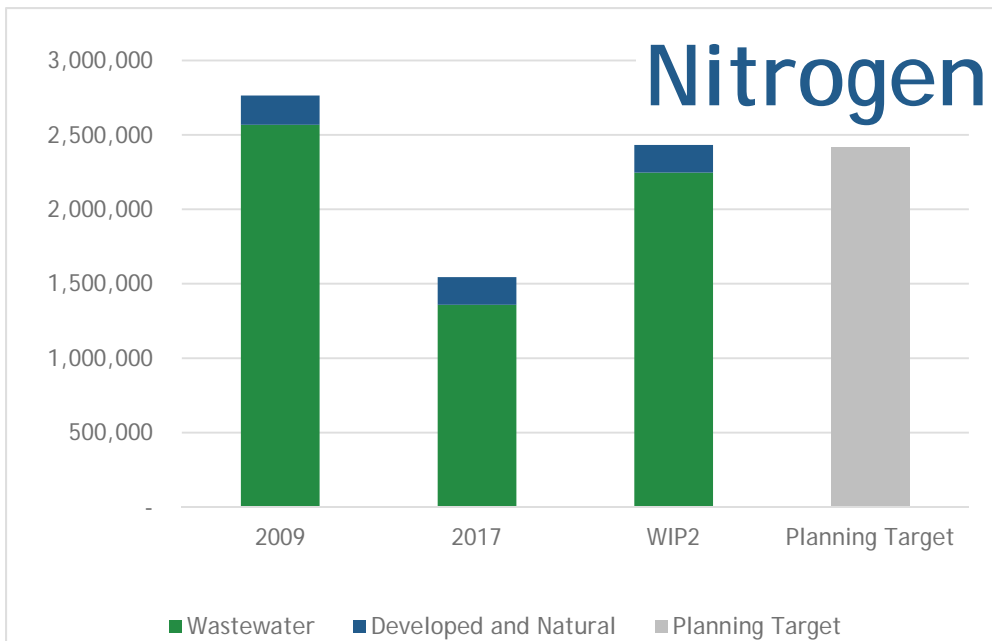


The Chesapeake Pollution Diet aka Bay TMDL

- ✓ Science tells us how much pollution Bay is receiving now and how much to reduce
- ✓ Chesapeake partnership divides that among states/DC
- ✓ State/DC writes a “watershed implementation plan” (WIP) to achieve the diet

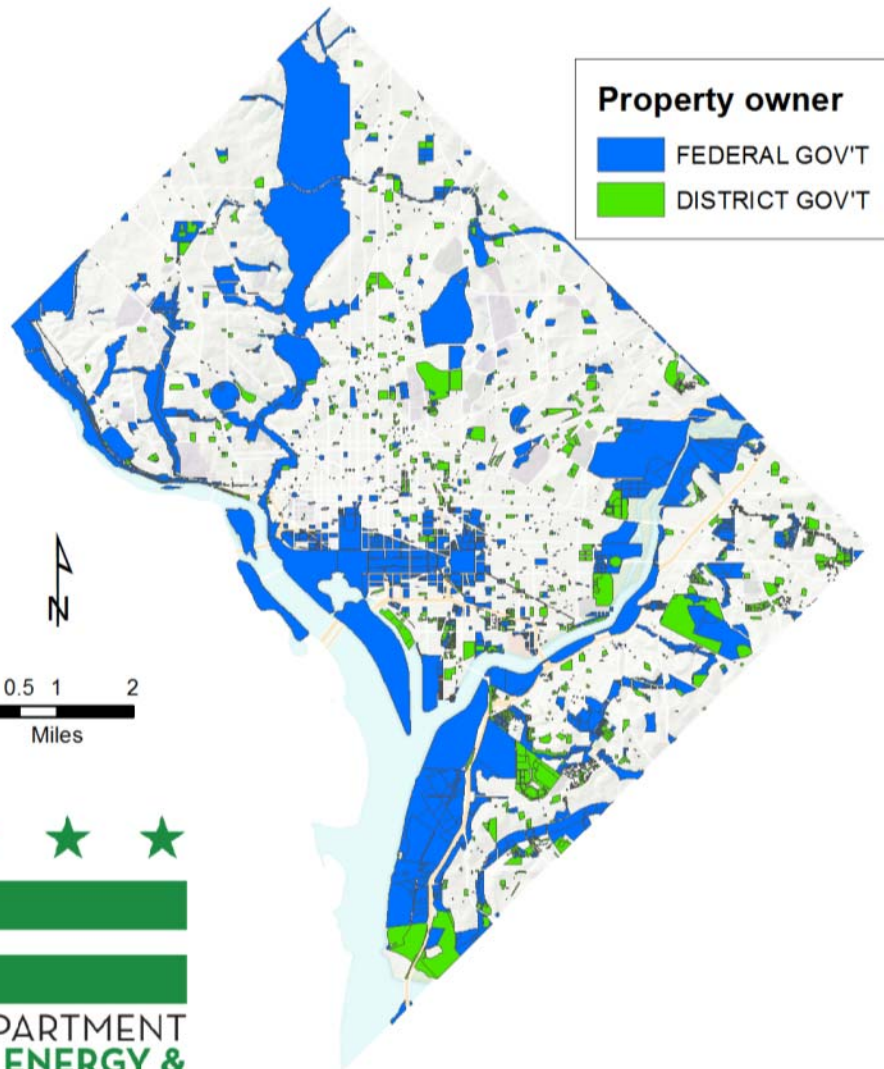
Each State/DC currently updating its WIP cleanup strategy





- ~90% pollution is from wastewater
- Much progress already
- Wastewater pollution will increase with growth
- Still more work to be done to reduce stormwater pollution

Federal Land in the District



- Almost 30% land federal
- Phase 6 Model enables planning, tracking by agency
- Major agencies:
 - National Park Service
 - Department of Defense
 - General Services Administration
 - Agricultural Research Service
 - Smithsonian
- EPA oversight of federal agencies and jurisdictions

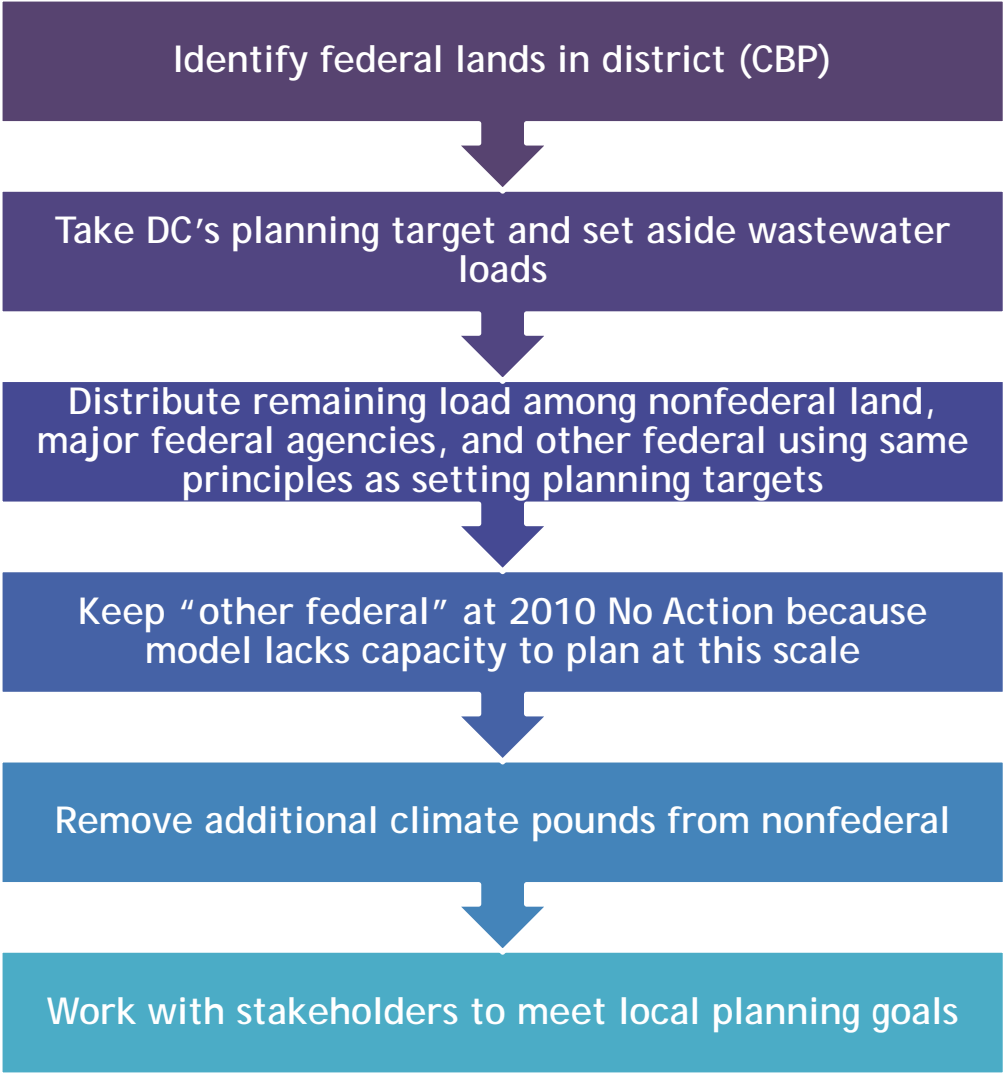
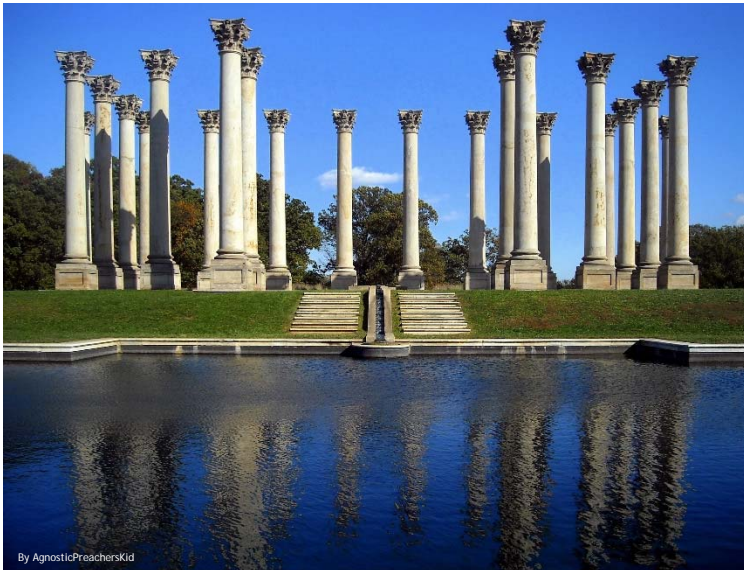


Identifying Federal Lands

- Federal agencies defined their areas and land uses using Federal Facility Editing Tool in 2013
 - Federal agencies will be able to amend this information for the 2019 Progress run (i.e., the 7/1/2018-6/30/2019 reporting period)
- This area and corresponding land uses were initially used in distributing planning target across the jurisdictions



Method to Develop Federal Agency Goals



Local Nitrogen Planning Goals - Nonwastewater

Agency	2010 No Action	2017 Progress*	Draft Planning Goal	2010 E3	Planning Goal as a % of E3
Agricultural Research Service	1,272	1,328	1,212	775	12%
Department of Defense	12,224	12,388	11,538	6,517	12%
General Services Administration	2,095	2,118	1,965	1,038	12%
National Park Service	37,060	35,287	35,178	22,266	13%
Smithsonian Institution	439	691	430	362	12%
Other Federal Land	130	152	130	80	0%
Nonfederal	146,924	133,830	132,298	71,992	20%
Total	200,143	185,795	182,750	103,030	

* DOEE recognizes 2017 progress does not fully reflect implementation to date. Implemented BMPs should be resubmitted for 2018 progress

Local Phosphorus Planning Goals - Nonwastewater

Agency	2010 No Action	2017 Progress	Draft Planning Goal	2010 E3	Planning Goal as a % of E3
Agricultural Research Service	104	106	83	46	35%
Department of Defense	1,145	1,141	941	588	37%
General Services Administration	141	141	109	57	38%
National Park Service	13,197	4,553	9,128	2,826	39%
Smithsonian Institution	103	112	82	47	37%
Other Federal Land	9	11	9	5	0%
Nonfederal	15,344	10,844	10,701	3,041	38%
Total	30,042	16,908	21,053	6,610	

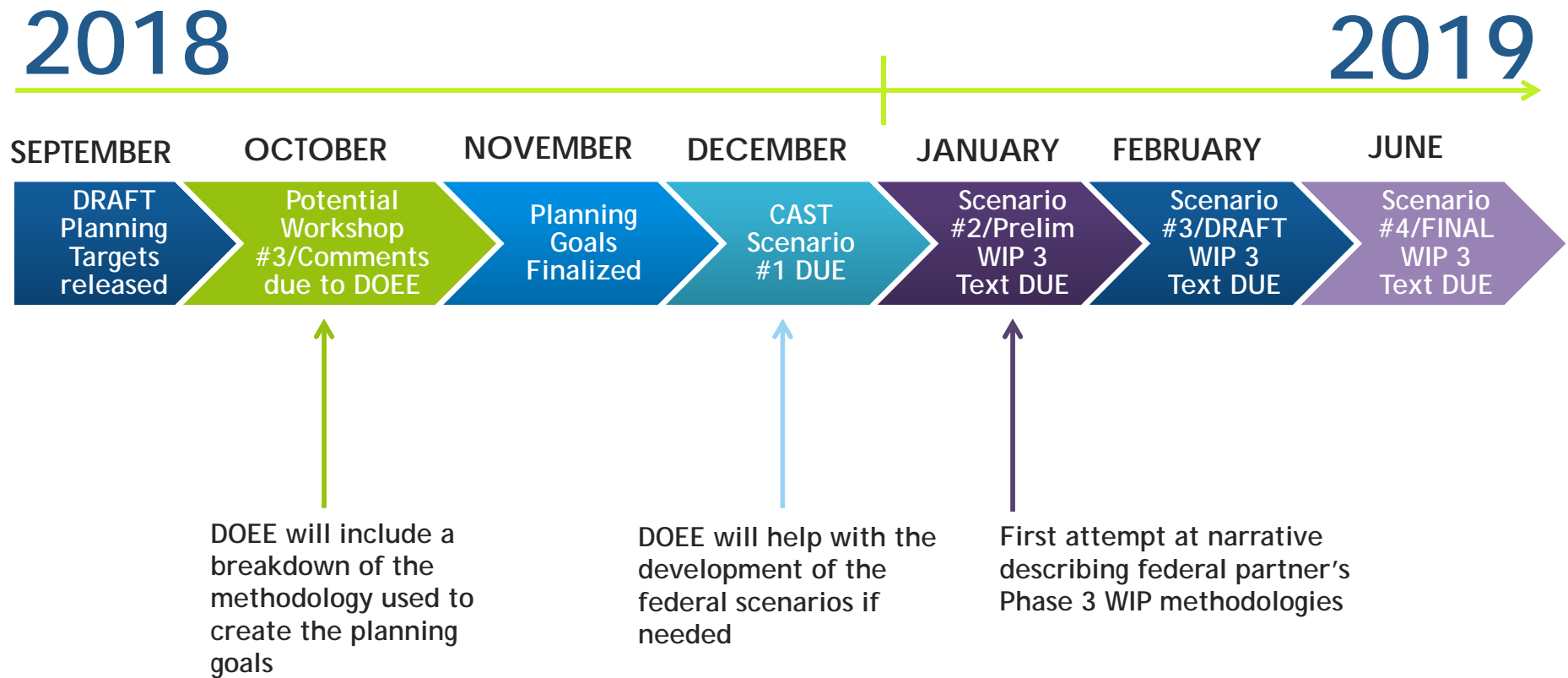
* DOEE recognizes 2017 progress does not fully reflect implementation to date. Implemented BMPs should be resubmitted for 2018 progress

Work with Federal Partners to Date

- Ongoing: DOEE participates on Federal Facility Working Group
- May 24, 2018: DOEE webinar provides overview of Phase III WIP, Chesapeake Assessment Scenario Tool (CAST) and District's Stormwater Database (SWDB) and preliminary planning goals
- May 31, 2018: DOEE workshop provides training on:
 - How to create planning scenarios in CAST
 - How to report implementation progress in SWDB
- June 2018: DOEE distributes template for submitting voluntary BMPs
- September 14, 2018: DOEE distributes draft local planning goals



Next Steps



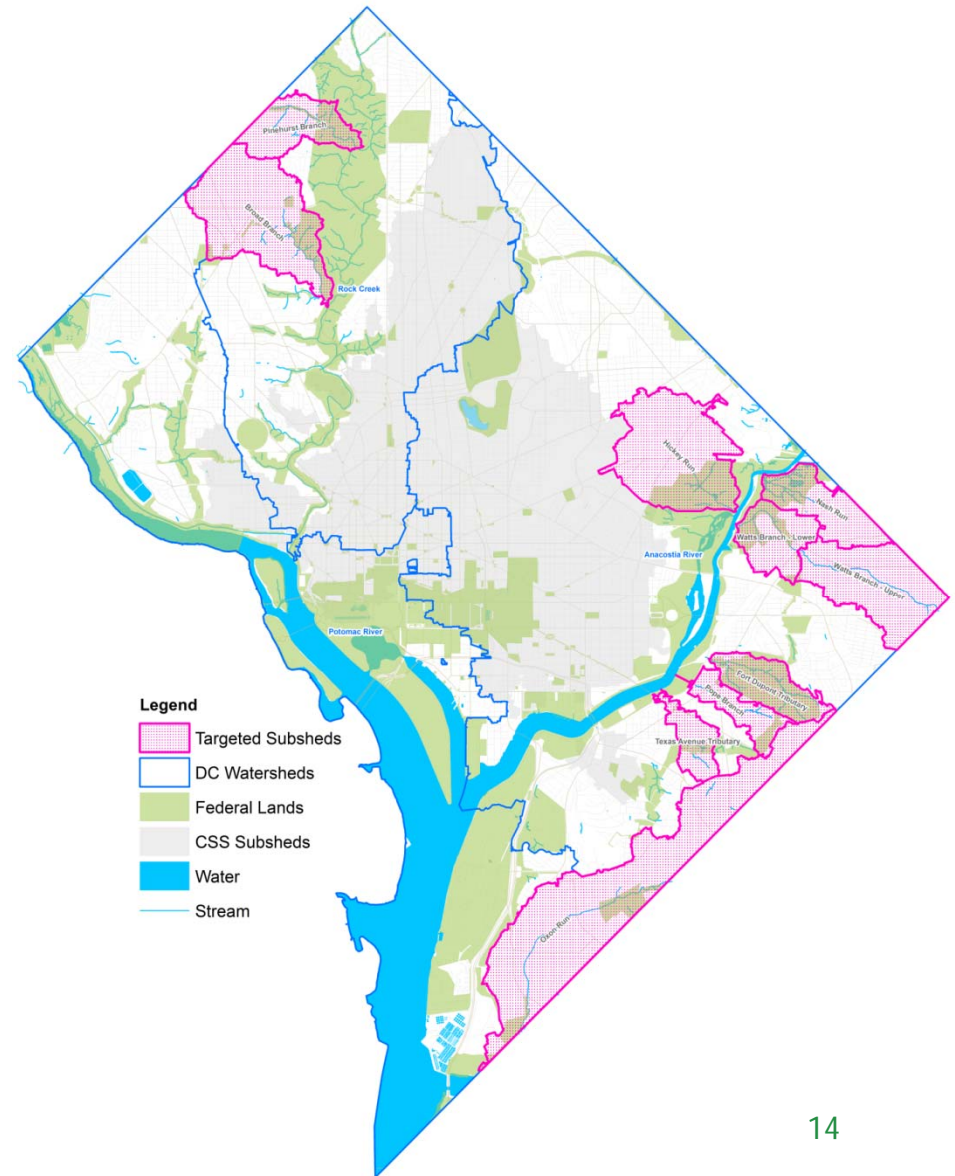
Opportunities

- Fine-tuning the Stormwater Database for more complete federal submissions
- Streamlining the annual reporting process
- Cataloging BMPs → Increased efficiency in identifying and inspecting BMPs approaching the end of their life cycle → Continuation of BMP credits



Other Targeting and Engagement Efforts

- Targeting for co-benefits
- Chesapeake Partner Advisory Group
- Stakeholder focus groups
- Existing forums
- Stakeholder and public meetings



Opportunities

- Fine-tuning the Stormwater Database for more complete federal submissions
- Streamlining the annual reporting process
- Cataloging BMPs → Increased efficiency in identifying and inspecting BMPs approaching the end of their life cycle → Continuation of BMP credits



Suggestions for Scenario Development

- What practices are already in place but not reported to Chesapeake Bay Program
- What practices will occur through complying with District stormwater management regulations
- What voluntary practices are already planned
- What more could be done, either on own or in partnership with District



Resources

- <https://www.epa.gov/sites/production/files/2018-09/documents/epa-phase-3-wip-expectations-federal-8-16-18.pdf>
- <http://cast.chesapeakebay.net/>
- https://www.chesapeakebay.net/documents/BMP-Guide_Full.pdf
- Updated Chesapeake Bay Program information on DOEE website forthcoming



Upcoming Deadlines for Federal Agencies

- ASAP/no later than November 1: Submit BMPs using SWDB template to receive credit for 2018 Progress
- December 3: CAST planning scenario #1 due
- January 3: CAST planning scenario #2 due
- January 10: Text for preliminary WIP due
- February 15: CAST planning scenario #3 due
- February 25: Text for draft WIP due
- April 12: Draft WIP posted online (EPA deadline)
- June 14: CAST planning scenario #4 due
- June 21: Text for final WIP due
- August 9: Final WIP posted online (EPA deadline)





Katherine Antos

Branch Chief

Partnering & Environmental Conservation Branch

Department of Energy & Environment

katherine.antos@dc.gov

(202) 574-7606

