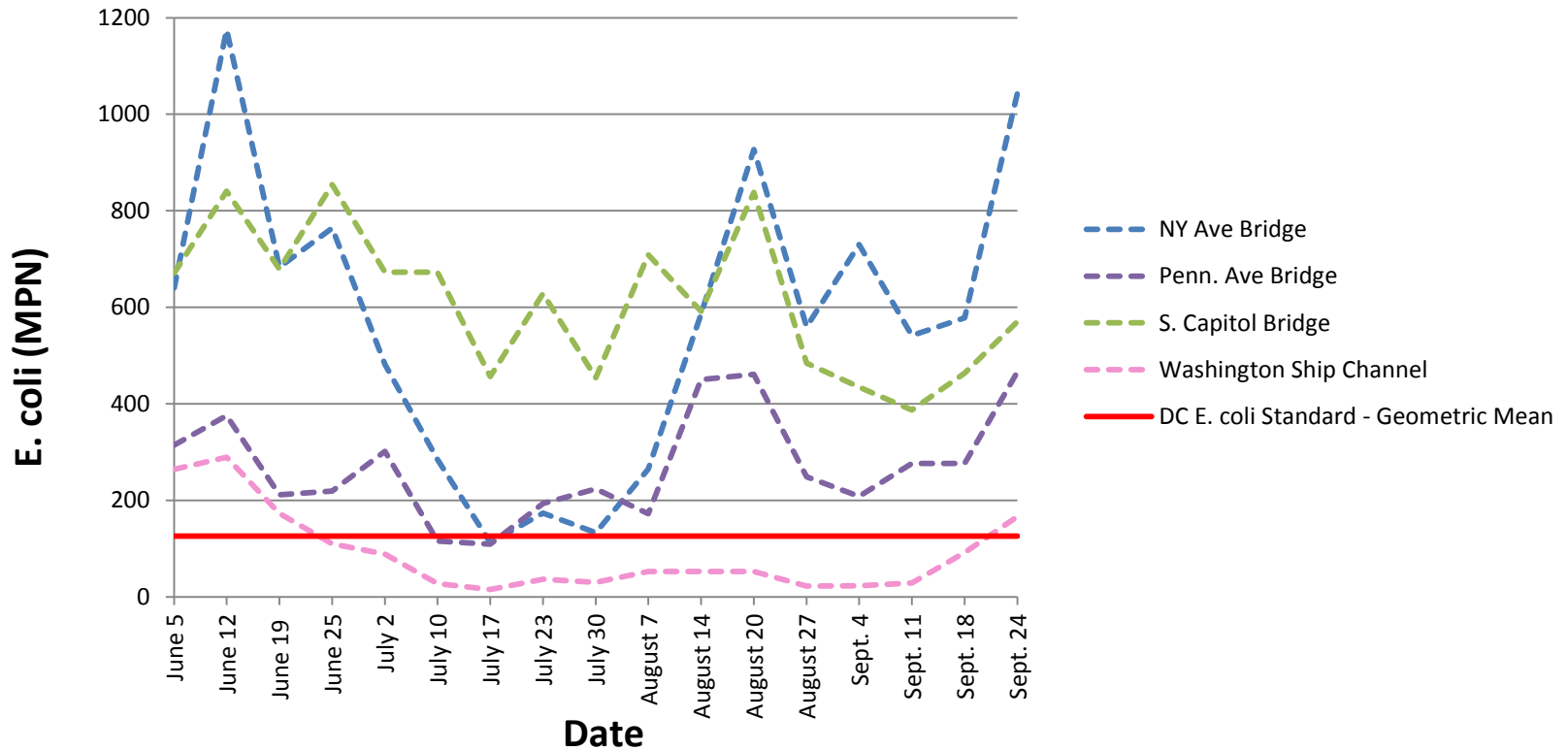


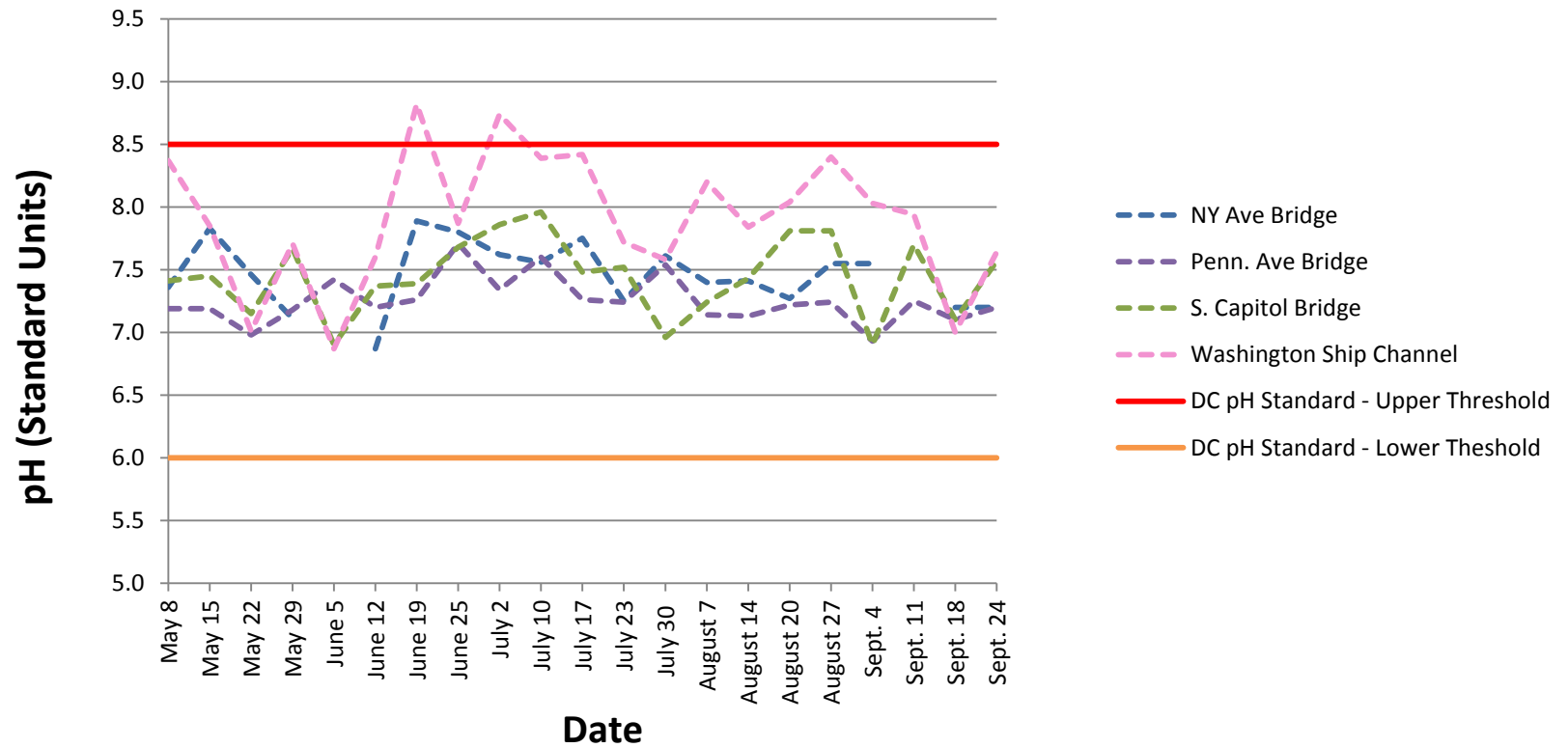
## Summer 2018 Rolling 30-day E. coli Geometric Mean Data for Anacostia River Stations



\*Due to access issues with the June 5 and Sept. 11 samples at the NY Ave. Bridge station, the geometric mean calculations for June 5 to July 2 and Sept. 11 to Sept. 24 only used 4 measurements and do not meet the 5 samples in 30 days E. coli criteria.

Data used to develop this chart was collected starting May 8, 2018 and ending September 24, 2018.

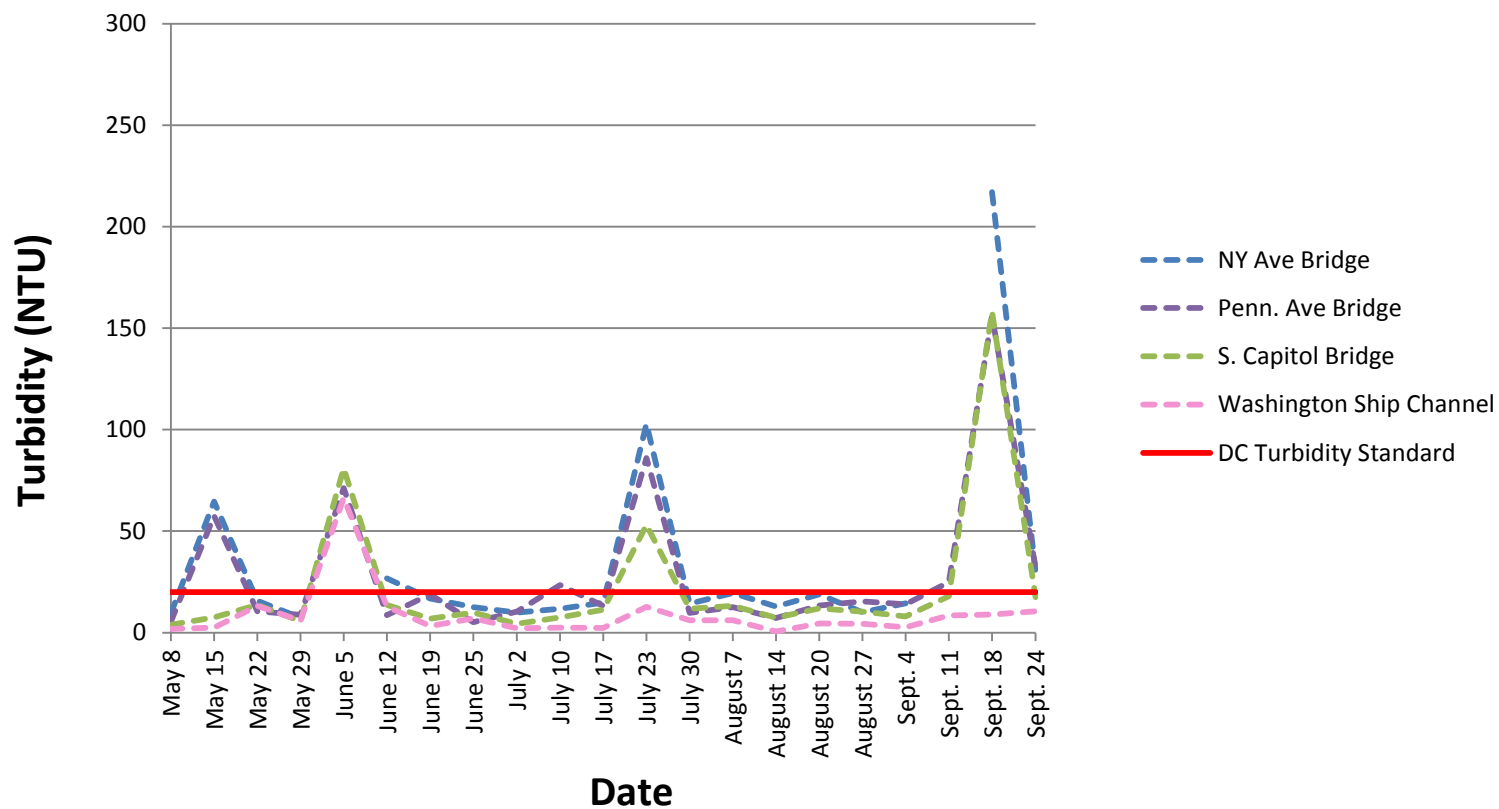
## Summer 2018 pH Data for Anacostia River Stations



\*No samples or measurements were collected at the NY Ave Bridge Station on June 5 or Sept. 11, 2018 due to access issues.

Data used to develop this chart was collected starting May 8, 2018 and ending September 24, 2018.

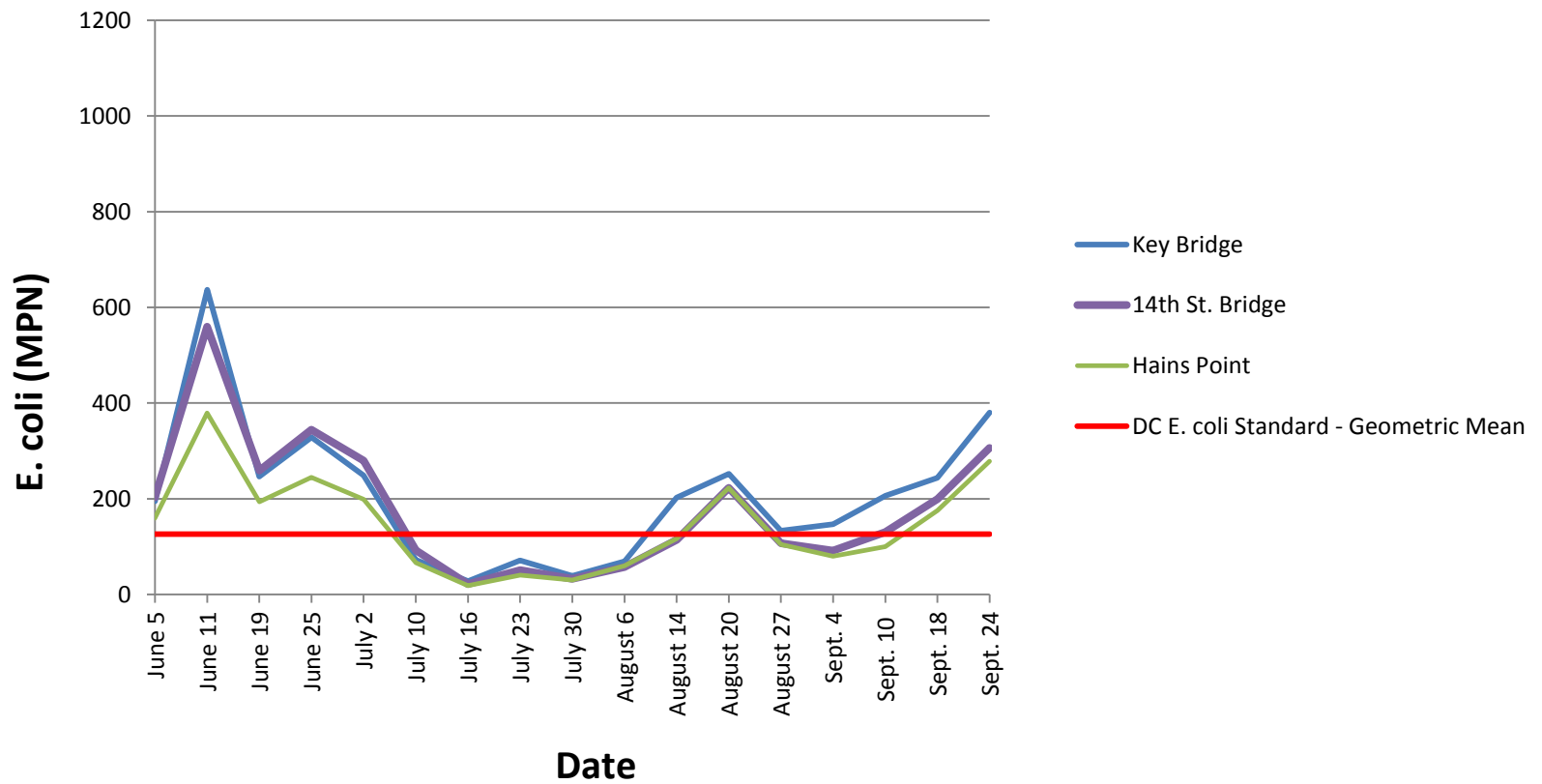
## Summer 2018 Turbidity Data for Anacostia River Stations



\*No samples or measurements were collected at the NY Ave Bridge Station on June 5 or Sept. 11, 2018 due to access issues.

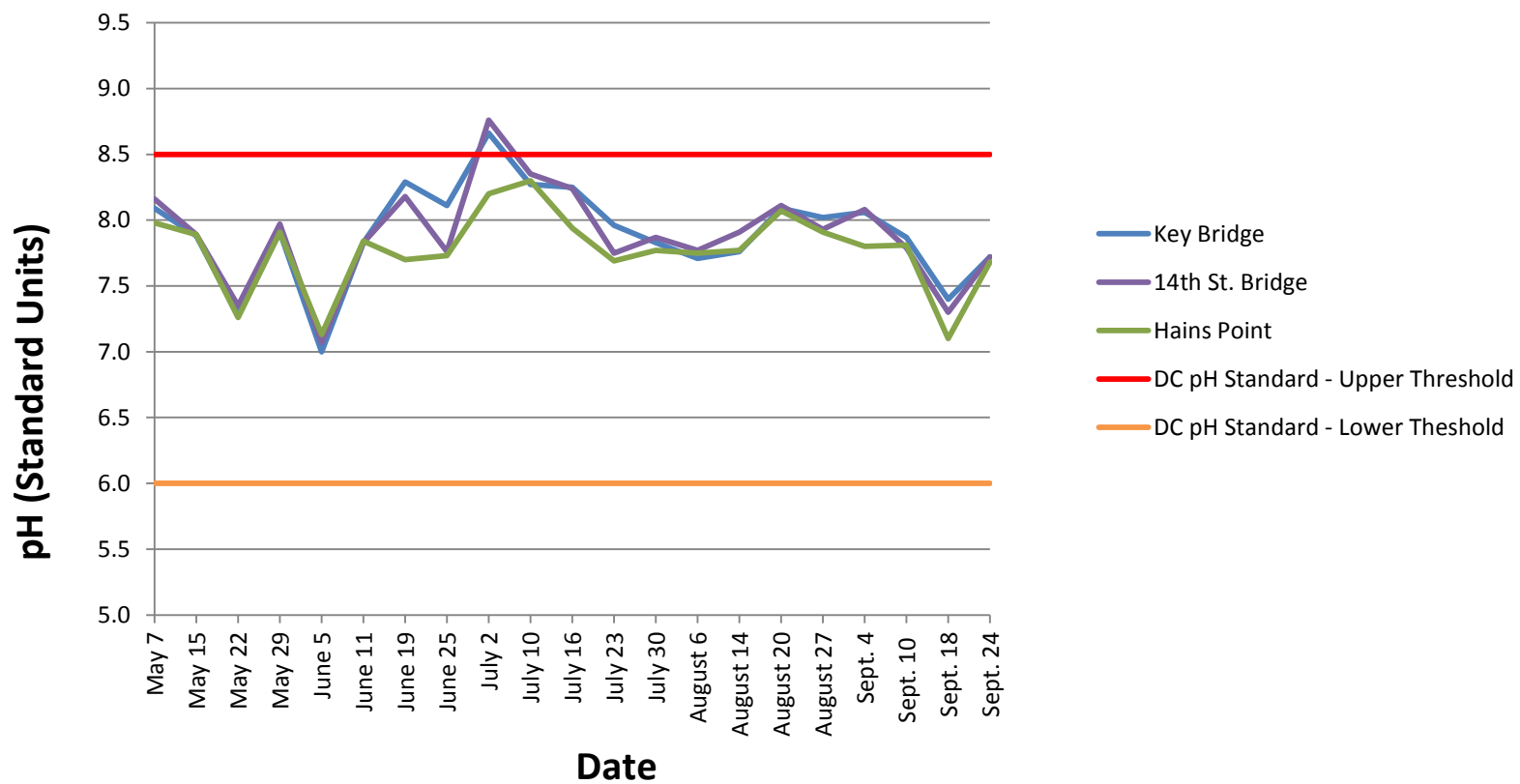
Data used to develop this chart was collected starting May 8, 2018 and ending September 24, 2018.

## Summer 2018 Rolling 30-day E. coli Geometric Mean Data for Potomac River Stations



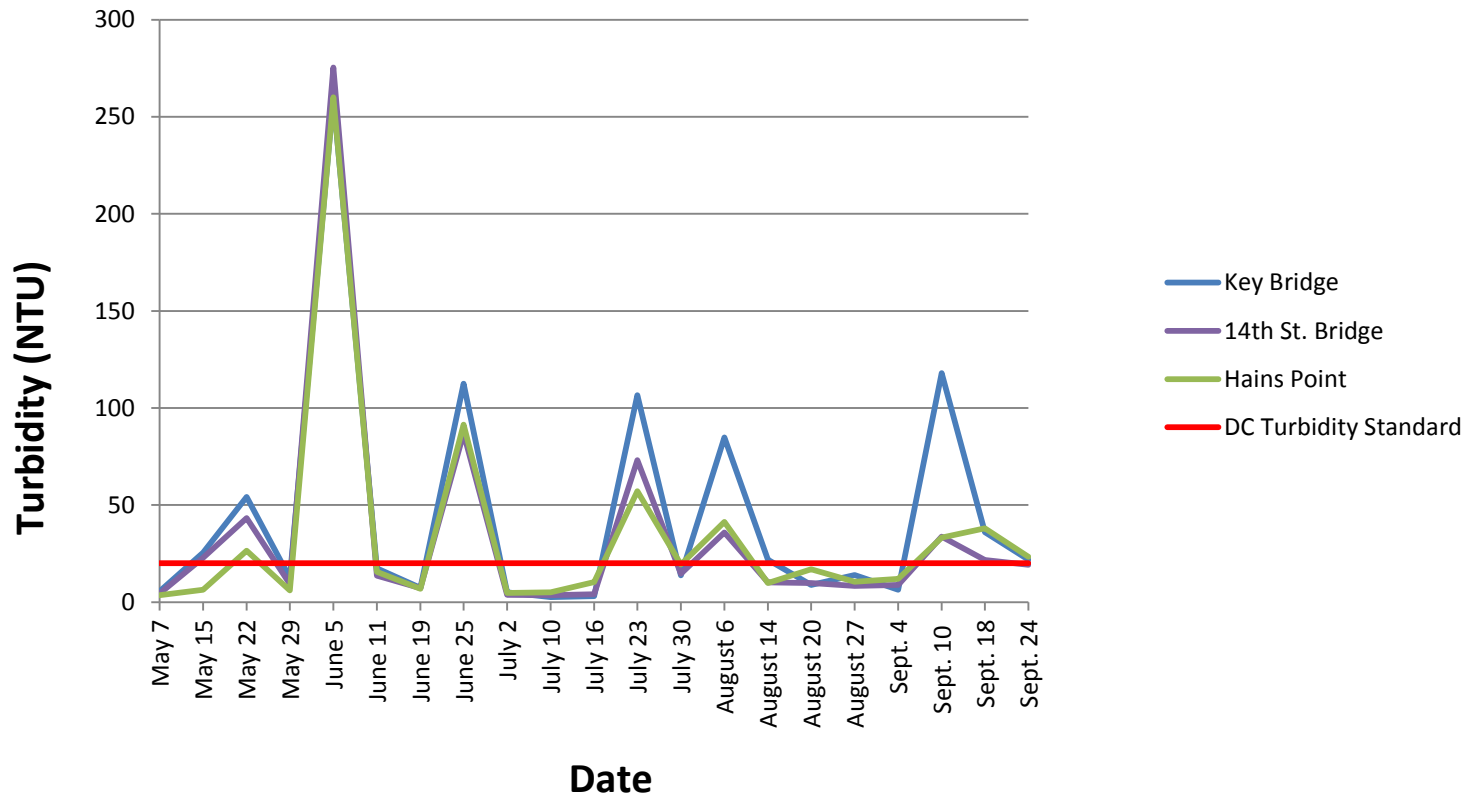
Data used to develop this chart was collected starting May 8, 2018 and ending September 24, 2018.

## Summer 2018 pH Data for Potomac River Stations



Data used to develop this chart was collected starting May 8, 2018 and ending September 24, 2018.

## Summer 2018 Turbidity Data for Potomac River Stations



Data used to develop this chart was collected starting May 8, 2018 and ending September 24, 2018.