

# Pollution Prevention for Manual Bridge, Street, and Sidewalk Snow Operations

HOW TO COMPLY WITH ENVIRONMENTAL REGULATIONS



@DOEE\_DC

# WHY DO WE CARE?

---

1. Pollution
2. Health impacts
3. Environmental regulations



# AIR QUALITY

---

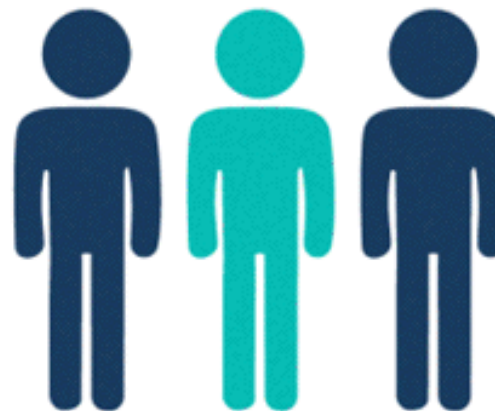
Exhaust is the #1 contributor to District air pollution

## 1. Health Impacts

- Headaches, dizziness, and trouble breathing
- Soot causes lung cancer and cardiovascular disease

## 2. Environmental Harm

- Increased ozone
- Climate change



In some areas of Washington, 1 in 3 children has Asthma. That is more than twice the national average of 1 in 7 children.



# AIR REGULATIONS

---

1. Do NOT idle for more than 3 minutes - **it is illegal!**
  - Up to 5 minutes if it is below freezing
2. Where NOT to idle:
  - In residential areas
  - At loading docks
  - By building air intakes



# STORMWATER IN WINTER

Rain and snow melt  
run off hard surfaces  
and become stormwater  
runoff

Runoff picks up pollution  
and carries it into  
stormdrains





2/3 of stormdrains empty into our streams  
and rivers with little to no treatment





# STORMWATER REGULATIONS

---

## Clean Water Act

- Protects rivers and streams from polluted stormwater
- Regulates discharges
- Sets water quality standards



## Municipal Operations

- EPA Consent Order
- District-wide Stormwater Permit
- Industrial Facility Permits



# STORMWATER POLLUTION

## Anything other than stormwater

- Dirt
- Trash
- Wash water and soaps
- Vehicle and equipment fluids
- Pesticides and fertilizers
- Paints and solvents
- Salt and Brine
- Rust
- Pet waste





# SALT POLLUTION

---

While salt is naturally occurring, too much is destructive

- Accumulate to toxic levels in soils
- Damage native animal habitat

Growing concern

- Harmful to children and pets
- More complaints
- Drinking water quality
- Health of rivers and streams



# RESPONSIBILITIES

---

MAINTAIN  
EQUIPMENT

MINIMIZE SALT  
USE

PREVENT &  
CLEANUP  
SPILLS

PRACTICE  
GOOD  
HOUSEKEEPING



# MAINTAIN EQUIPMENT

---



@bikepedantic

1. Check your equipment
  - Before and after
2. Do not delay repairs
3. Only wash vehicle and equipment in designated areas

# MINIMIZE SALT USE

---

1. Clear Accumulated snow
2. Never apply when it's raining or is expected to rain
3. Don't dump excess salt!





# MINIMIZE SALT USE

---



4. Apply in a thin, even layer
- Where and as often as directed
  - Set spreader
  - Travel at a reasonable speed

	Application Rate (lbs/1,000 ft <sup>2</sup> )	Cold Setting (32° - 25° F)*	Extreme Cold (25° - 15° F)*
Rock Salt (Splash Ice Melt)	1.5 - 5	5	15
ULINE Ice Melt	2.5 - 5	8	28

\* Estimated setting for manual spreader with 30 settings.

# PREVENT AND CLEANUP SPILLS

---



## 1. Salt Spills

- Never overfill equipment
- Store salt inside and under cover
- Clean up salt spills ASAP

## 2. Fluid Spills and Leaks

- Keep an eye out for them
- Clean up immediately





# SPILL REPORTING

- Call 911 or FEMS  
if it gets into a public storm drain or cannot be controlled
- Notify facility staff of any spills or leaks



# PRACTICE GOOD HOUSEKEEPING

---

## KEEP IT CLEAN & TIDY

UNCOVERED STORAGE



COVER & ELEVATE STORAGE



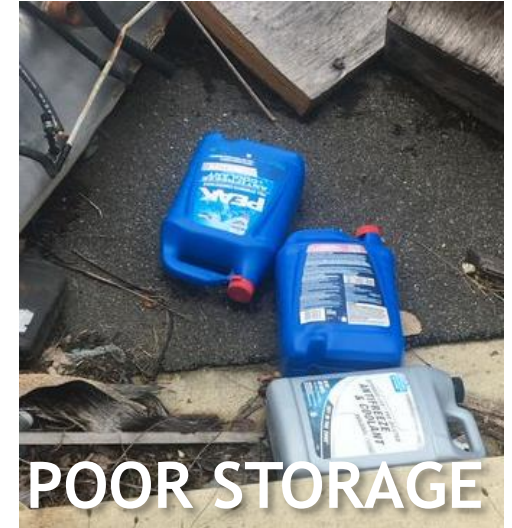
KEEP IN  
SECONDARY CONTAINMENT





# GOOD HOUSEKEEPING

---



# REVIEW

---

## Prevent Air Pollution

1. Don't idle for more than 3 minutes
2. Avoid idling in residential areas, at loading docks, and by building air intakes



## Prevent Stormwater Pollution

1. Maintain equipment
2. Minimize salt use
3. Prevent and cleanup spills
4. Practice good housekeeping

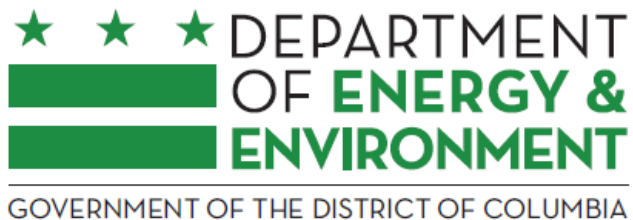




# QUESTIONS?

**Clara Elias**

Pollution Prevention Coordinator  
Watershed Protection Division  
[clara.elias@dc.gov](mailto:clara.elias@dc.gov)  
202-645-4231



**@DOEE\_DC**



© KRISTA SCHLYER