



**GREEN
WRENCH**
TECHNICAL ASSISTANCE
DEPARTMENT OF ENERGY & ENVIRONMENT

TOOLBOX

JUNE 2022



EV Charging station in Fremont, CA
(Photo from greencarreports.com)

SIGN UP

The GreenWrench Program provides free pollution prevention guidance and training to District auto body and repair shops. GreenWrench services include:

1. Technical assistance visits
2. Workshops
3. GreenWrench Toolbox Newsletter
4. Certification

Sign up online at
doee.dc.gov/service/greenwrench
or by calling (202)-430-0156

ANNOUNCEMENT

ELECTRIC VEHICLE CURBSIDE CHARGING STATION PROGRAM

DDOT Electric Vehicle Charging Station Program expands curbside charging opportunities throughout the district to expand the ownership of electric vehicles. It is also aimed at providing the necessary infrastructure for future EV owners especially those without access to off-street parking.

The newly launched program creates a public space permit available to EV charging station vendors to install a charger at eligible curbside spaces in the district. Learn more [Electric Vehicle Charging Station Program | ddot \(dc.gov\)](https://ddot.dc.gov/electric-vehicle-charging-station-program)

DISTRICT BUSINESS OFFERS SOY-BIOBASED TIRES

MAC's Tires, owned by Pam and her mother, supplies Good year's soy-based tires to customers helping support environmental goals. Good year developed the product in partnership with United Soybean Board (USB), offering four lines of tires. Read more [Goodyear Tires with Soybean Oil: Delivering Great Performance in D.C. - SoyBiobased.org : SoyBiobased.org](https://soybiobased.org)

VEHICLE WASHING



Photo credit: City of Bothell, WA (above)

Washing vehicles may seem like a harmless activity, but it can have serious consequences on the water quality in District streams and rivers. Water and detergents can wash harmful pollutants off cars including heavy metals found in brake dust and oil and gasoline residue. For this reason, vehicle washing by businesses is regulated in the District. Which regulations and permits apply to an automotive repair business's washing operations depends on where it is located in the District and where the wash water drains.

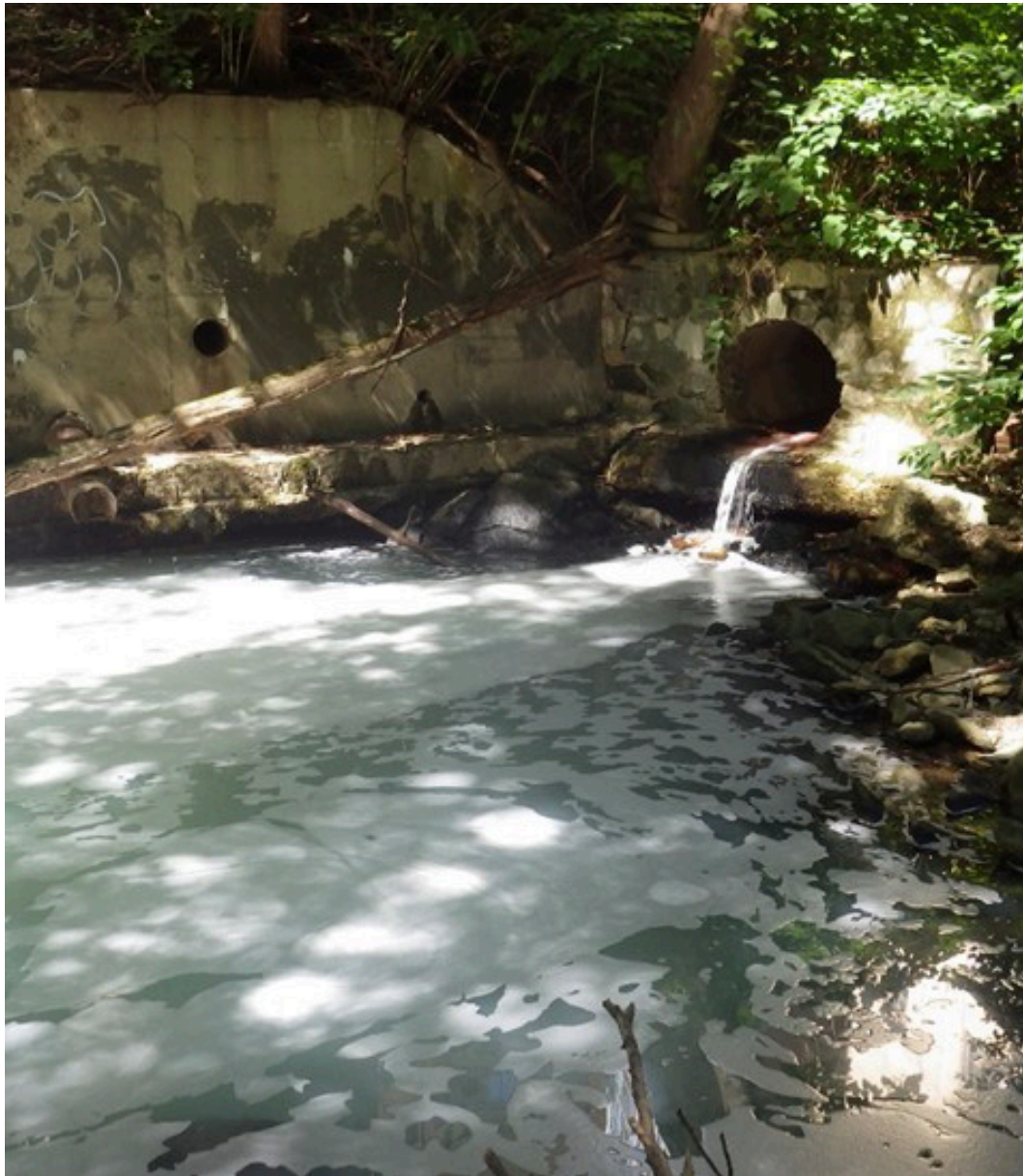
To find out which regulations apply to your business, search for its address on this map and make note of whether it is in the combined sewer (CSS) or the Municipal Separate Storm Sewer System (MS4):

www.arcgis.com/apps/InformationLookup/index.html?appid=a60a0086b47c4e35a638b7a8abe5954f

- If your washing operations are in the MS4, you will need to divert your wash water into the sanitary sewer (at least two thirds of all District automotive repair businesses are in the MS4).
- If your washing operations are in the CSS or you divert your wash water to the sanitary sewer, you will need a discharge permit from DC Water (you may need a Temporary Discharge Permit or Wastewater Discharge Permit depending on the type of operation www.dewater.com/permits).

VEHICLE WASHING

In the MS4 area, wash water and other pollutants that enter curb inlets and other drains that collect rainwater are plumbed directly to local streams and rivers. Under the Clean Water Act, untreated wash water is prohibited from entering storm drains in the District unless it is from a personal vehicle that is being washed at home. This helps protect the health of our residents, waterways, and wildlife from detergents, heavy metals, dirt, and other pollutants found in wash water. Learn more about stormwater permitting requirements for businesses at: doee.dc.gov/service/stormwater-regulations-operational-facilities



Soapstone Creek in the District's Van Ness neighborhood became sudsy after wash water was allowed down a storm drain in 2015 (photo credit: DOEE)



GREEN WRENCH

TECHNICAL ASSISTANCE
DEPARTMENT OF ENERGY & ENVIRONMENT

TOOLBOX NEWSLETTER

DID YOU KNOW?

Sign up to be a Fix-It DC Coach in your community. Fix-It DC is an all-ages community even where people bring their broken household things and learn how to assess, disassemble, and repair them instead of sending them to the landfill. We're looking for volunteer coaches with knowledge and skills to repair electronics and musical instruments.

Our Fix-It Coaches have found that participating in Fix-It DC is a valuable way to promote their business and meet potential new customers. If you would like to learn more about Fix-it DC program, or would like to sign up to be a coach, visit our website at : doee.dc.gov/service/fix-it-dc

