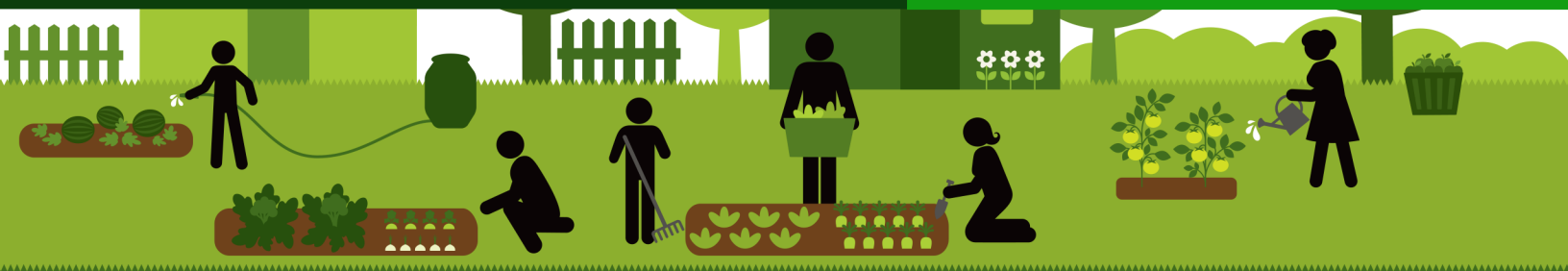


# Read the Label First!

## PROTECT YOUR GARDEN



Sooner or later, an insect or disease could attack your houseplants, garden vegetables, lawn, shrubs, or flowers. If you use a pesticide or other garden product, you need to know that some garden products can harm plants, people, or the environment if not used correctly.

## Follow These Tips When Selecting and Using A Garden Product

### ✓ Know Your Pest

**Knowing the problem is the first step toward solving it.** Not all bugs are bad – some are harmless and others help fight pests. Identifying the problem lets you find the best way to prevent and manage pests.

### ✓ Find the Product that Solves the Problem

**All products do not work on every pest.** Labels tell you what a product is meant to do and how it should be applied. Choose a product that is labeled for your specific pest and consider EPA-registered biopesticides.

### ✓ Buy the Right Amount for Your Needs

**The product label tells you how much to use to treat a problem.** Buy only what you need. Some products might not work as well if stored for long periods of time. A larger size is not a good value if you can't use it.

### ✓ Pay Attention to Warnings

**Follow directions about wearing gloves or protective clothing.** Understand when and how to apply the product and when it is safe for people or pets to reenter treated areas. Note how long to wait before picking fruits and vegetables.

### ✓ Use the Product the Right Way

**Product labels tell you how to safely use products for best results.** Use only the amount indicated on the label. More is not better and can even harm plants and lawns. If the label tells you to mix a product in another container, use all of the mixture. If you can't use all the mixture, label the new container for use in the future.

### ✓ Prevent Harm to the Environment

**Outdoor lawn and garden products that run into ponds, creeks, or other water supplies can contaminate drinking water and kill fish and birds.**

Apply products according to label directions to prevent harm to the environment. Never pour lawn and garden products down a drain. If you can't use all of the mixture, pass it on, with the label instructions, to someone who can. If disposal is your only option, contact your local solid waste authority for safe disposal information.



## Know Where to Call for Help

- Many labels contain a phone number to call in an emergency.
- Have the phone number for your doctor and local poison control center by the phone.
- Have the product with you when you call. The label contains important information about the product.



# Read the Label First!

## PROTECT YOUR HOUSEHOLD



Many household products such as cleaners and pesticides could harm children, pets, or the environment if not used and stored correctly. Choose a product that is labeled for your specific pest. EPA encourages consumers to consider using EPA-registered biopesticides and products with **EPA's Safer Choice label**, which are generally less harmful. Simply reading a products label will help keep your family, your pets, and your community safe.

## Keep Your Family and Community Safe with these Tips

### ✓ Read the Label First

#### Labels tell you:

- How to use a product safely and effectively.
- How to store the product safely.
- First aid instructions.
- Phone numbers to call for help or more information.

### ✓ Follow All Label Precautions

- Warnings and directions tell you how to use products safely and correctly.
- Follow warnings to open windows, wear gloves, and not breathe product dust.
- Keep pets and children away from treated areas as directed on the label.

### ✓ Keep Products in Original Containers

- It is very dangerous to put products in food and beverage containers. Children think that something in a familiar bottle is safe to drink or play with.
- Containers without tight fitting lids can easily spill.

### Know Where to Call for Help

- Many labels contain a phone number to call in an emergency.
- Have your local poison control center number and veterinarian's or local animal hospital number easily accessible.
- Have the product label with you when you call! The label provides those helping you with important information about the product.

- If you throw away the original container, you throw away important information needed in case of an emergency.
- If the label tells you to mix a product in another container, use all of the mixture. If you can't use all the mixture, label the new container for use in the future.

### ✓ Prevent Harm to the Environment

- Apply a product according to the label directions to prevent harm to the environment
- Do not apply a product where it could run into ponds, creeks, or other water supplies and contaminate drinking water and kill wildlife
- Spraying products on a windy day can carry the product into nearby water.
- Never pour pesticides or other lawn and garden products down the drain.

### ✓ Buy the Right Product for Your Needs

- Read the label to make sure you're buying the right product for the job. This will save you time, money, and frustration.
- Buy only what you need. If you buy too much, pass the product on to someone who can use it, with the label instructions. Some products might not be effective if stored for long periods of time. A larger size is not a good value if you can't use it.
- Use the right amount. Labels indicate the correct amount to use. Using more can waste the product, your money and can cause harm to people, pets and the environment.



# Read the Label First!

## PROTECT YOUR KIDS



Many common household products such as cleaners and pesticides could hurt a child if not used and stored correctly. Adults have an important responsibility to prevent children from exposure to these potentially harmful products.

EPA encourages consumers to consider using EPA-registered biopesticides and products with **EPA's Safer Choice label**, which are generally less harmful.

## Keep Children Safe with these Tips

### ✓ Read the Label First

#### Labels tell you:

- How to use the product safely and effectively.
- How to store the product safely.
- First aid instructions.
- Phone numbers to call for help or more information.

### ✓ Follow all Label Precautions

- Warnings and directions for use tell you how to use products safely and correctly. This helps keep you and your children safe.
- Follow warnings to open windows, wear gloves, and not breathe product dust.
- Keep children away from spills and treated areas as directed.

### ✓ Keep Products in Original Containers

- It is very dangerous to put products in food and beverage containers. Children think that something in a familiar juice or soda bottle is good to drink.
- If you throw away the original container, you throw away important information needed in case of an emergency.
- If the label tells you to mix a product in another container, use up all of the mixture.
- If you can't use all of the mixture at once, label the new container for future use and note the safety information.

### ✓ Store Products Out of the Reach of Children

- Make sure all of your household cleaning and pesticide products are stored out of children's reach.
- Use childproof locks on low cabinets.
- Make certain child-resistant caps and covers are in place.
- Teach your children that household products are not toys.

## Know Where to Call for Help

- Many labels contain a phone number to call in an emergency.
- Have the phone number for your doctor and local poison control center by the phone.
- Have the product with you when you call. The label contains important information about the product.







The animals that share our lives and homes rely on us for protection. Many common household products such as cleaners and pesticides could hurt a pet if not used and stored correctly. Keep all products out of the reach of pets. EPA encourages consumers to consider using EPA-registered biopesticides and products with **EPA's Safer Choice label**, which are generally less harmful.

## Keep Pets Safe with these Tips

### ✓ Read the Label First

#### Labels tell you:

- How to use a product safely and effectively.
- How to store the product safely.
- First aid instructions.
- Phone numbers to call for help or more information.

### ✓ Follow all Label Precautions

- Warnings and directions tell you how to use products safely and correctly. This helps keep you and your pets safe.
- Follow warnings to open windows, wear gloves, and not breathe product dust.
- Keep pets away from treated areas as directed on the label.



## Know Where to Call for Help

- Many labels contain a phone number to call in an emergency.
- Have your local poison control center number and veterinarian's or local animal hospital number easily accessible.
- Have the product label with you when you call! The label provides those helping you with important information about the product.

### ✓ Keep Products in Original Containers

- It is very dangerous to put products in food and beverage containers.
- Containers without tight fitting lids can easily spill, allowing your pet access to the product.
- If you throw away the original container, you throw away important information needed in case of an emergency.
- If the label tells you to mix a product in another container, use all of the mixture. If you can't use all the mixture, label the new container for use in the future.

### ✓ Keep Pets Away from Products

- Don't spray or store cleaning or pesticide products near pet food or water dishes.
- Make sure animals can't get at bait products while they are in use.
- In the event of a spill, be sure to keep animals out of the area until it is cleaned up.
- Don't forget about wildlife. Spraying products on a windy day can carry the product into the water supply for wild animals.
- Make sure all household cleaning products and pesticides are stored out of reach for pets.

