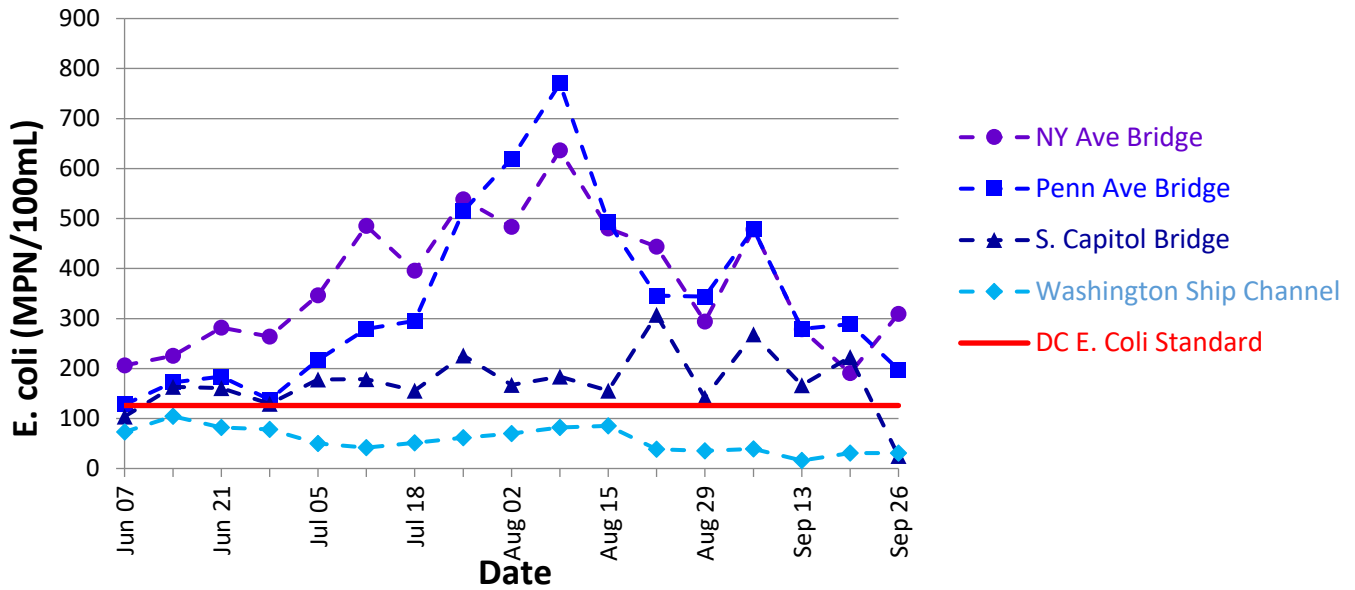
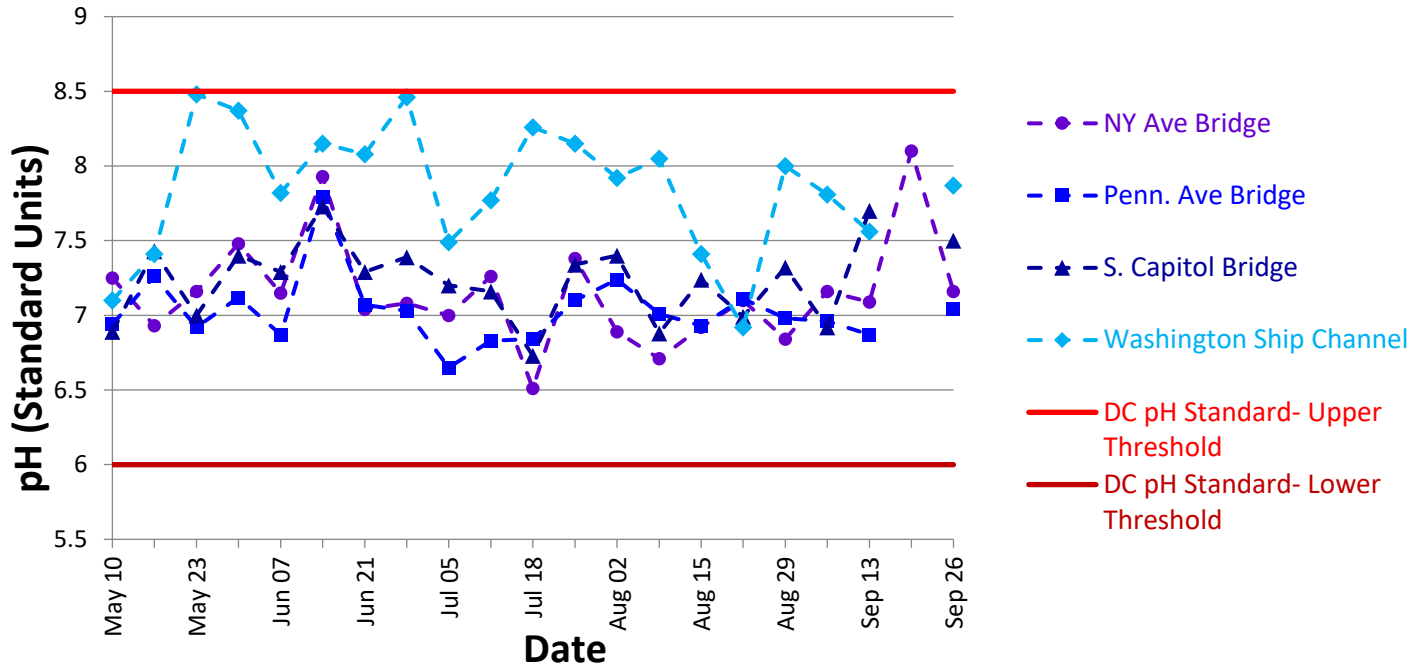


## Summer 2022 Rolling 30-day E. coli Geometric Mean Data for Anacostia River Stations



Data used to develop this chart was collected starting July 7, 2022, and ending September 26, 2022.

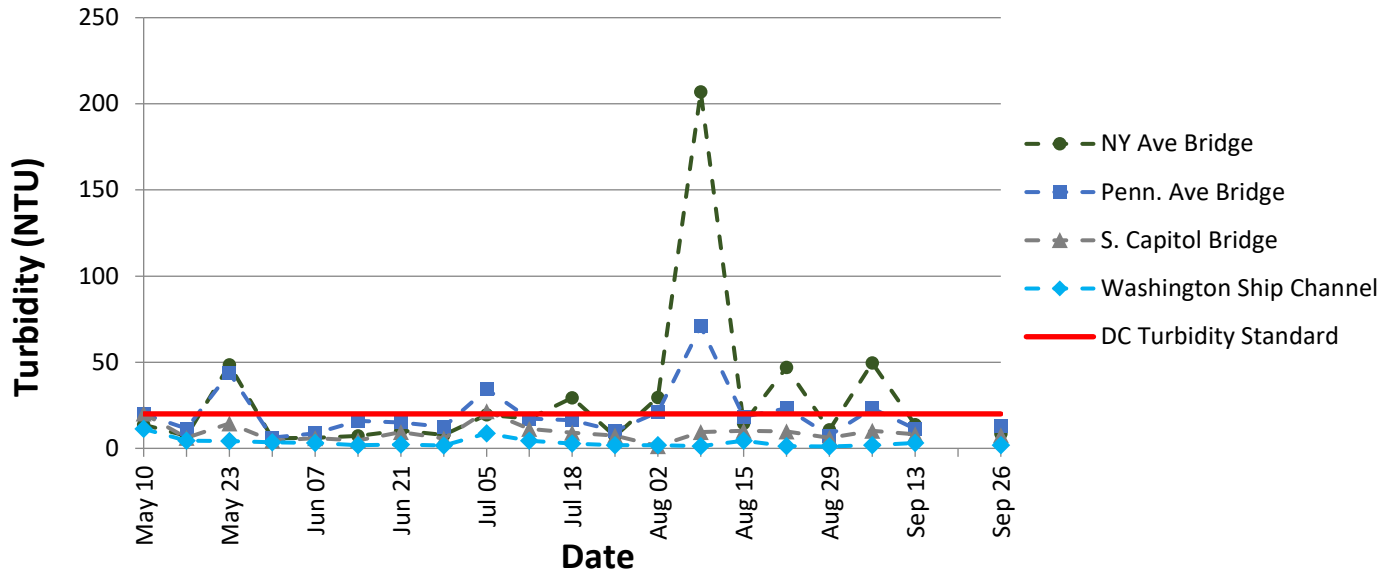
## Summer 2022 pH Data for Anacostia River Stations



Data used to develop this chart was collected starting May 10, 2022, ending September 26, 2022.

Field instrument was not available to collect data on September 20, 2022.

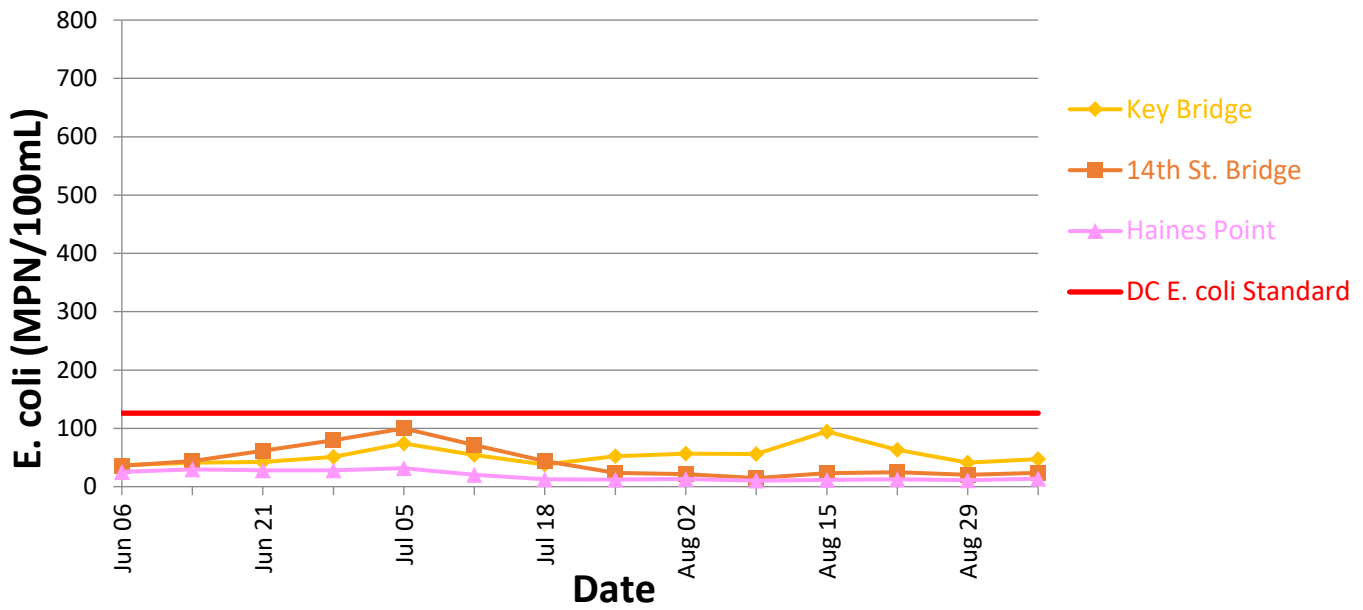
## Summer 2022 Turbidity Data for Anacostia River Stations



Data used to develop this chart was collected starting May 10, 2022, ending September 26, 2022.

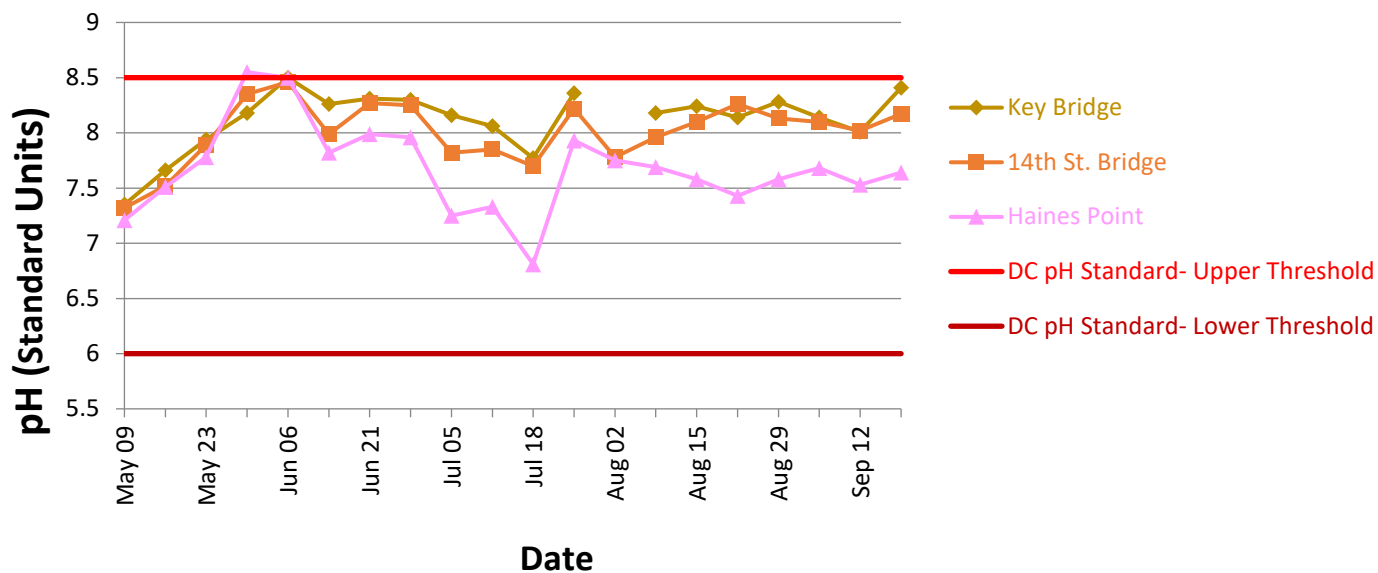
Field instrument was not available to collect data on September 20, 2022.

## Summer 2022 Rolling 30-day E. coli Geometric Mean Data for Potomac River Stations



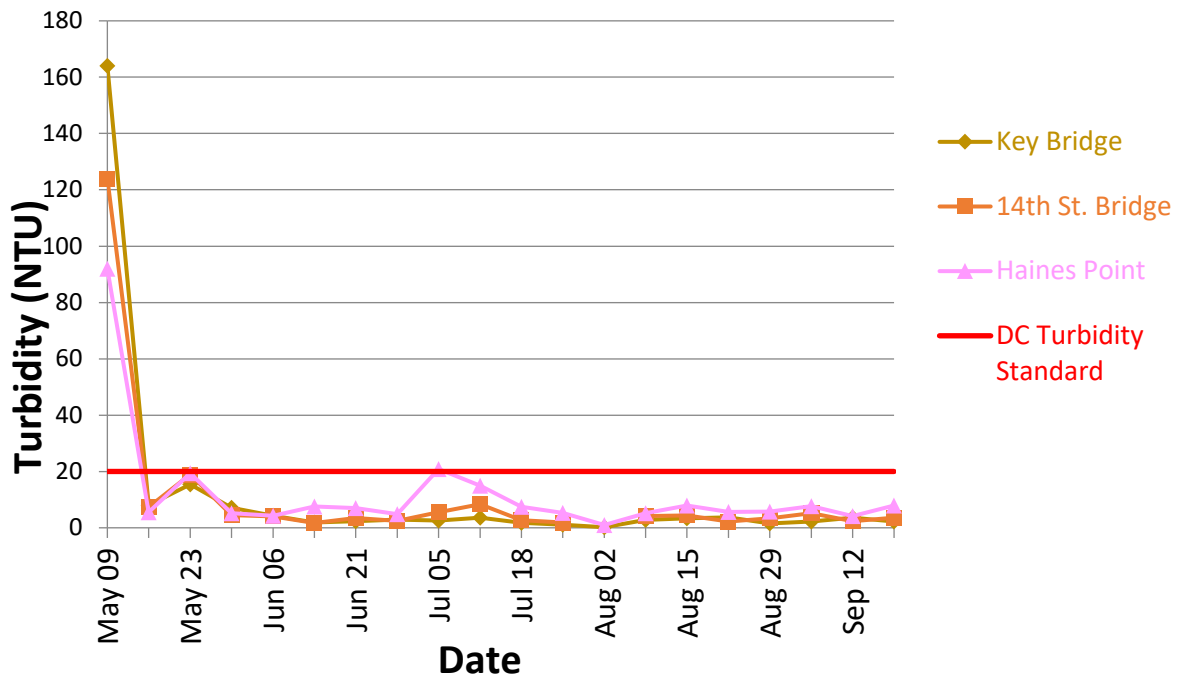
Data used to develop this chart was collected starting July 6, 2022 and ending September 26, 2022.

## Summer 2022 pH Data for Potomac River Stations



Data used to develop this chart was collected starting May 10, 2022, ending September 26, 2022.

## Summer 2022 Turbidity Data for Potomac River Stations



Data used to develop this chart was collected starting May 10, 2022, ending September 26, 2022.