

Rain Barrel Maintenance

Checklist

Frequency	RiverSides rain barrel (octagonal)	Hydra rain barrel (rectangular)
Every Rain Period: Water	-Use the water from the barrel on a permeable surface like a lawn or garden. Direct the overflow to a rocky area to decrease the water's speed and drain it evenly.	
Monthly: Remove Filter Debris	-Pull filter cylinder from the diverter box. -Invert the filter sock, remove the debris. -Reinsert sock and cylinder into the box.	-Remove debris from the filter screen.
Seasonally-Spring: Transition barrel to collect	-Twist the diverter dial to 'collect' water. -Close the spigot.	-Switch the y-diverter dial to the 'collect' position -close the spigot.
Bi-Annually- Spring/Fall: Gutter Maintenance	-Clean roof gutters -Inspect the downspout leading to the barrel. Make sure the connection is secure.	
Seasonally- Winter: Transition barrel to bypass	-Drain the barrel & keep the spigot open -Turn the diverter dial to 'bypass'	-Drain the barrel & keep the spigot open -Switch the y-diverter dial to the 'divert' position

Tips:

- **Hydra Y-Diverter:** The side the toggle sits on indicates where the water will flow. If it sits on the right side, water will flow through the right leg.
- **Barrels shift over time:** As they fill and empty, the ground settles. Re-level the ground under the barrel every spring.
- **Using Water:** Drain your barrel so water does not sit in it longer than a couple weeks. Long-term sitting water can put pressure on your barrel's spigot.

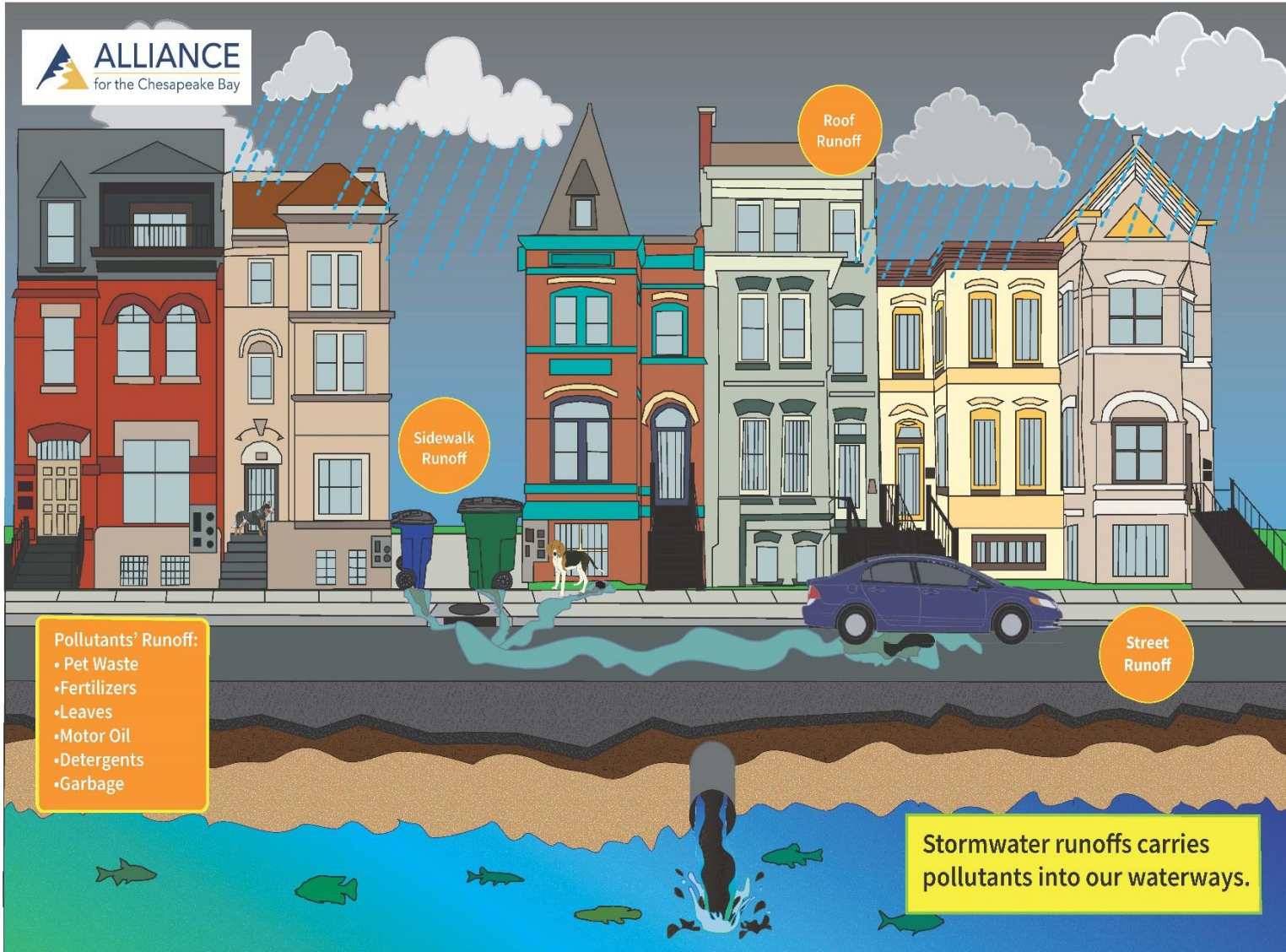
Glossary:

- **Diverter Box:** The box on the side of the RiverSides barrel that filters and adjusts the flow of water.
- **Downspout:** The pipe leading water from your roof gutter to the ground.
- **Permeable:** A material that liquid can pass through.
- **Spigot:** The small faucet at the bottom of the barrel.



For more information visit RiverSmart Homes at: doee.dc.gov/service/riversmart-home or contact Savanna Lightcap with the Alliance for the Chesapeake Bay: [sightcap@allianceforthebay.org](mailto:slightcap@allianceforthebay.org) • (202)-553-6483





Managing stormwater runoff can help bring
cleaner water faster!

Stormwater Facts:

- Only about **5% of water** that hits your property infiltrates into the ground. The water flowing off takes pollutants into the storm drain and directly into our waterways
- **43% of land** in DC is covered by hard surfaces that rain cannot penetrate
- Rain gardens allow **30% more water** to soak into the ground than a conventional lawn
- Rain barrels can save up to **1,300 gallons** of water during peak summer months
- About **18 million** people live in the Chesapeake Bay Watershed. Stormwater runoff is the fastest growing source of Bay pollution

Tips:

- Use a broom to clean your driveway, not water
- Always pick up pet poop
- Use less fertilizer, if at all
- Keep oils, grass litter, and trash out of the storm drain

Resources:

- stormwater.allianceforthebay.org
- epa.gov
- chesapeakebay.net